



Price

£600,000

Freehold

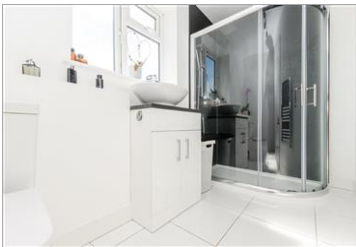
4x  2x  1x 

**Willow Wood Road,
Meopham, Kent, DA13**

OVER 60?

Secure this property
for up to **59% less!**

Wards
Helping you move forwards



Main features

- No onward chain
- Off road parking for multiple vehicles
- Open plan kitchen/diner with double doors leading onto rear garden
- Spacious family home which has been extended to the side
- Short walk to the local primary school and amenities

Accommodation

GROUND FLOOR

Entrance Hall: 10'11 x 8'6 (3.33m x 2.59m)

Cloakroom: 4'5 x 3'8 (1.35m x 1.12m)

Lounge: 15'11 x 11'11 (4.85m x 3.63m)

Kitchen/Diner: 22'5 x 14'11 (6.84m x 4.55m)

Utility Room: 10'5 x 8'6 (3.18m x 2.59m)

Store Room: 7'4 x 5'2 (2.24m x 1.58m)

FIRST FLOOR

Landing

Bedroom 1: 15'6 x 8'10 (4.73m x 2.69m)

Bedroom 2: 14'11 x 8'5 (4.55m x 2.57m)

Bedroom 3: 11'11 x 9'8 (3.63m x 2.95m)

Bedroom 4: 9'8 x 7'5 (2.95m x 2.26m)

Shower Room: 9'11 x 5'3 (3.02m x 1.60m)

Bathroom: 5'5 x 4'11 (1.65m x 1.50m)

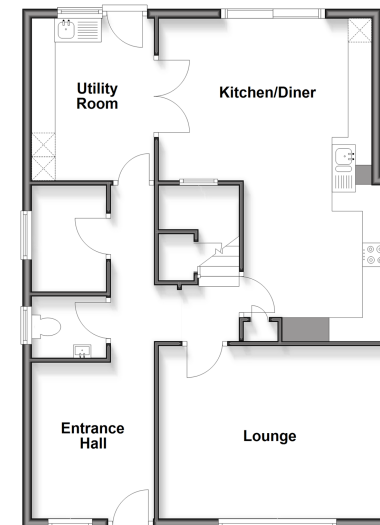
OUTSIDE

Driveway

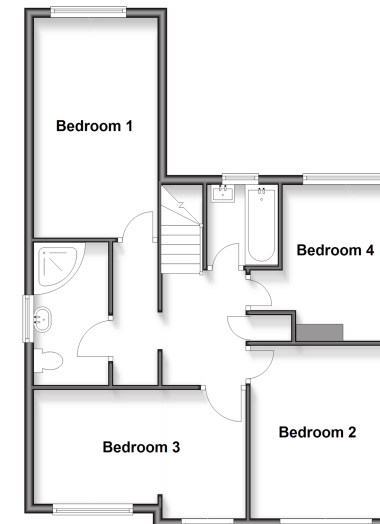
Front Garden

Rear Garden

Ground Floor
Approx. 77.4 sq. metres (833.1 sq. feet)



First Floor
Approx. 61.6 sq. metres (663.2 sq. feet)



Call Meopham - 01474 813100 ■ wardsof Kent.co.uk

- Legal advice should be taken to verify fixtures/fittings, planning, alterations and/or lease details
- Appliances & services are untested, dimensions are approximate and floor plans are not to scale
- Through a Homewise Home For Life Plan people aged 60+ can secure this property for up to 50% less, by purchasing a Lifetime Lease.



13326039/20250901/SB/KD