



**May Lane**

Kings Heath, Birmingham

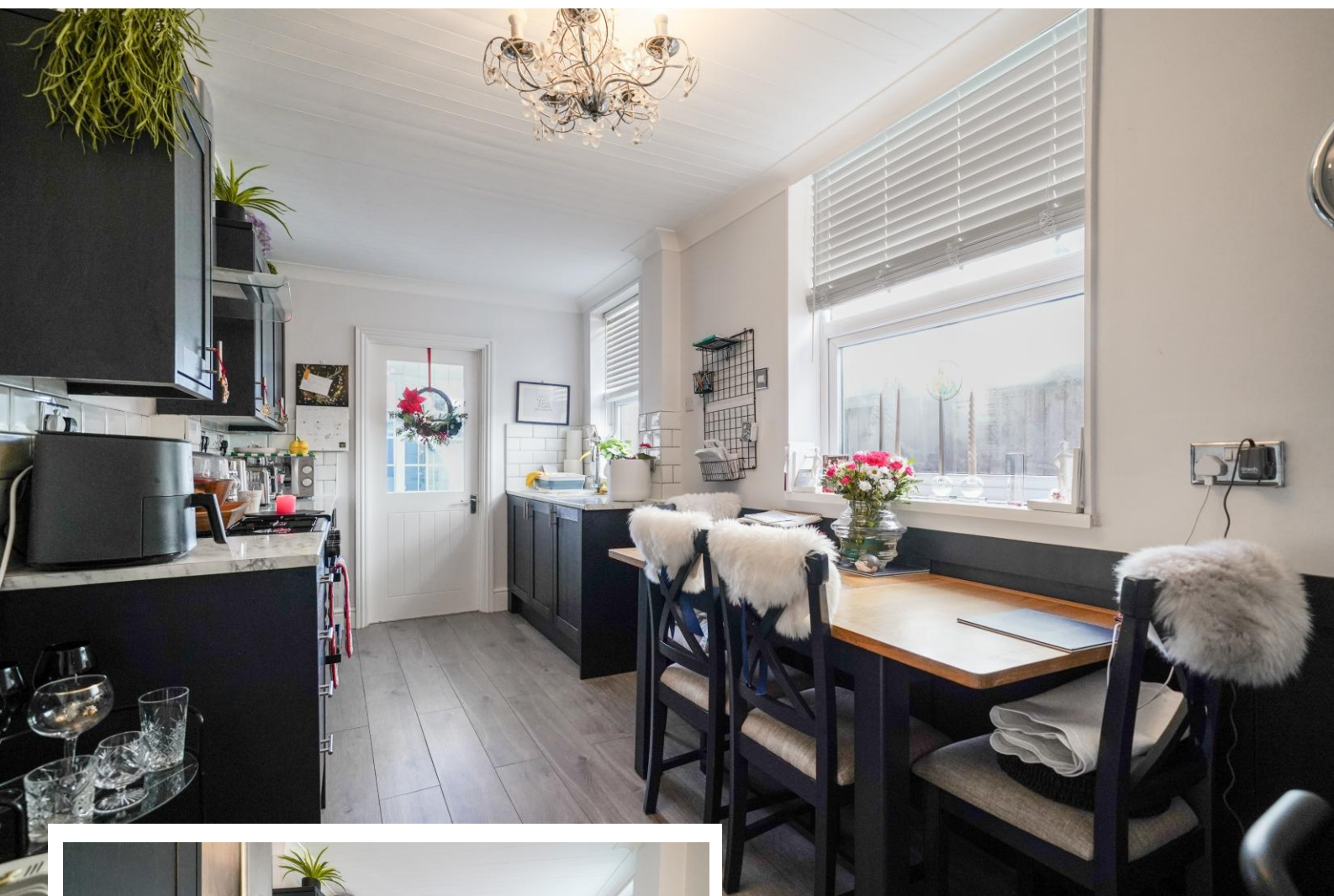
- A Beautifully Presented Two Bedroom Family Home
- Fitted Breakfast Kitchen & Utility Room
- Lovely Four Piece Family Bathroom
- Delightful South/Westerly Facing Rear Garden

**£280,000**

Current EPC Rating - D  
Current Council Tax Band - B



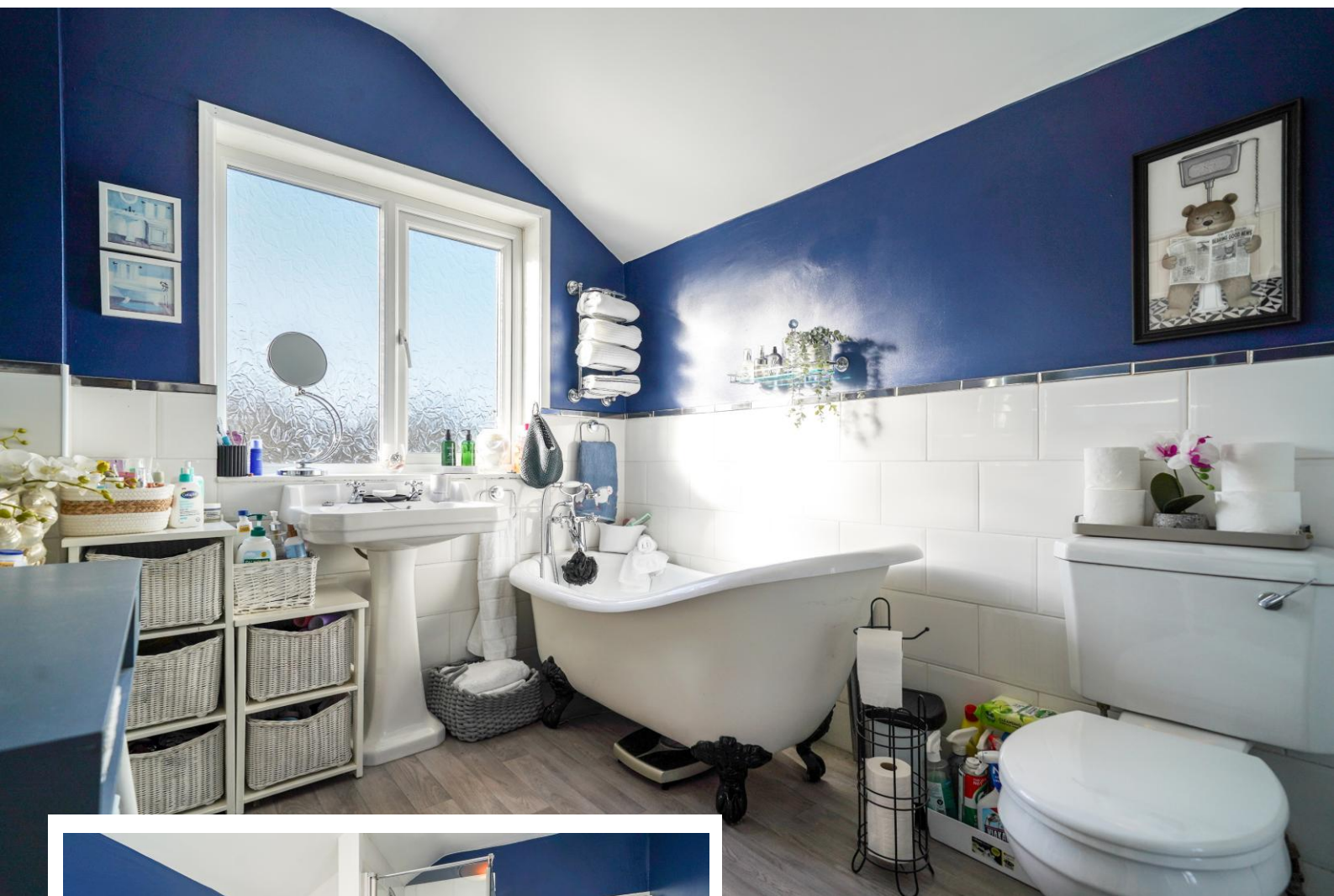




## Property Description

A very well presented two bedroom mid-terrace property offering accommodation comprising a spacious through lounge, fitted breakfast kitchen, utility room, four piece family bathroom and delightful South/Westerly facing rear garden





## Rooms & Measurements

Spacious Through Lounge 2.5m x 7.9m (8'2" x 25'11")

Fitted Breakfast Kitchen to Side 2.2m x 4.8m (7'2" x 15'8")

Utility Room to Rear 2.1m x 2.1m (6'10" x 6'10")

Bedroom One to Front 3.3m x 2.9m (10'9" x 9'6")

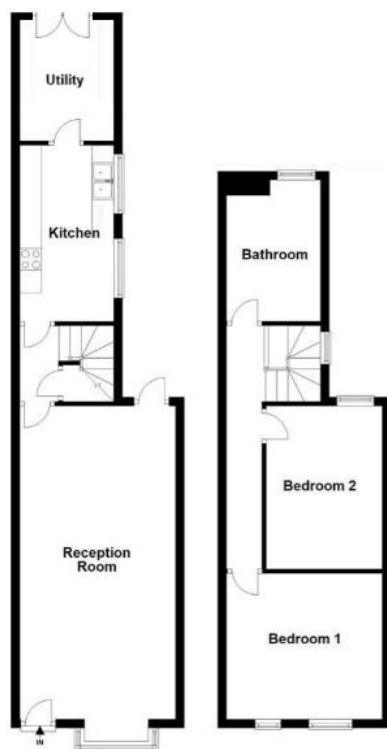
Bedroom Two to Rear 3.6m x 2.6m (11'9" x 8'6")

Family Bathroom to Rear 2.2m x 3.2m (7'2" x 10'5")

### Tenure

We are advised by the vendor that the property is freehold. We would advise all interested parties to obtain verification through their own solicitor or legal representative. EPC supplied by vendor. Current council tax band – B





316 Stratford Road  
Shirley  
Solihull  
B90 3DN

[www.smart-homes.co.uk](http://www.smart-homes.co.uk)  
0121 744 4144

Agents Note: Whilst every care has been taken to prepare these particulars, they are for guidance purposes only. We believe all information to be correct from the day of marketing however, we advise and recommend that your conveyancer and or surveyor verifies all information supplied. All measurements are approximate are for general guidance purposes only and whilst every care has been taken to ensure their accuracy, they should not be relied upon and potential buyers are advised to recheck the measurements.