

Royal Quarter, KT2

£1,650 Per calendar month

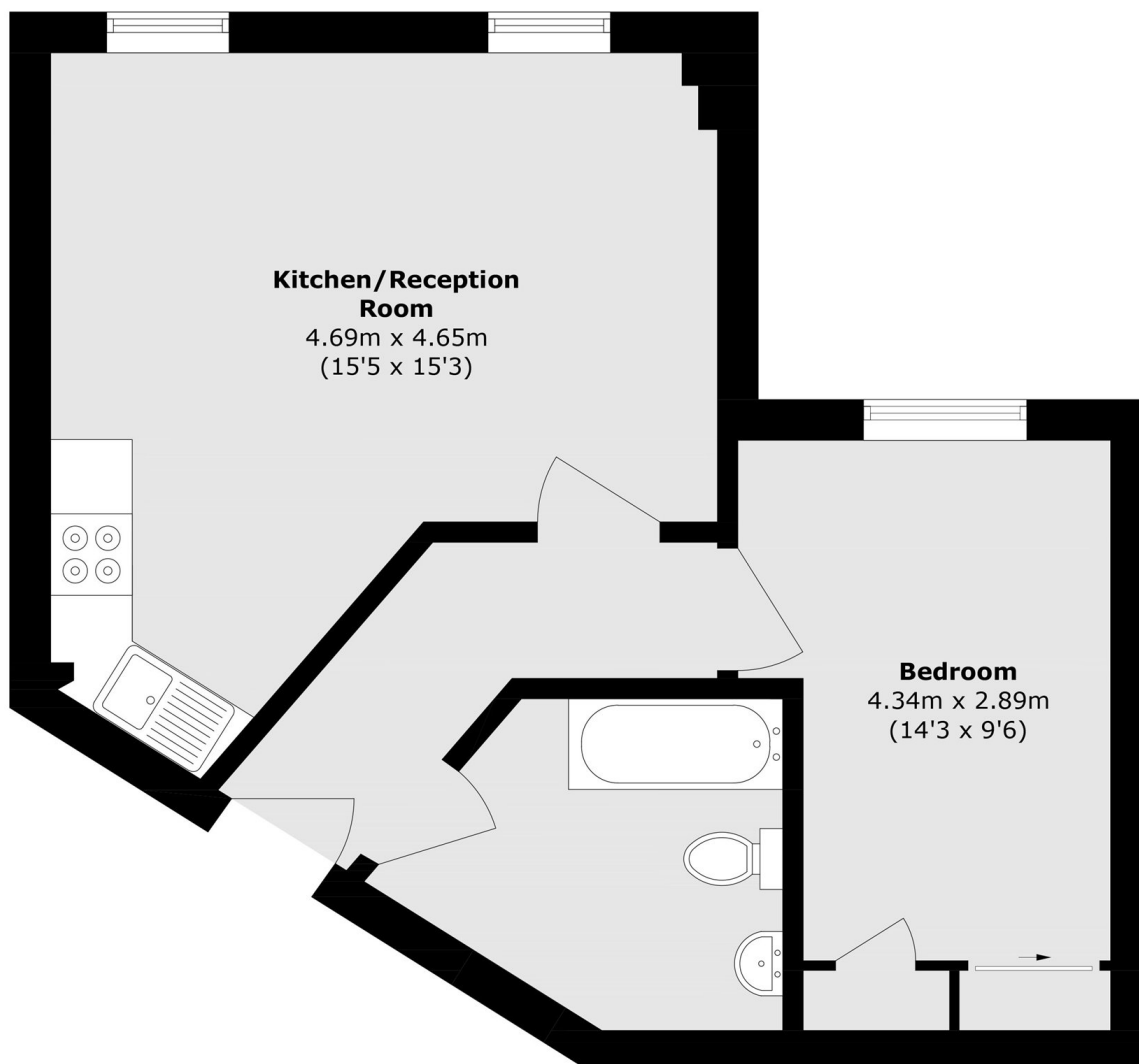
Located on the first floor, is this light and airy apartment which has a spacious reception room and open-plan modern kitchen. There is a double bedroom with a fitted double wardrobe and fully tiled modern bathroom.

Royal Quarter is located in central Kingston within close proximity of the historic Kingston town centre, and Kingston's mainline train station with frequent trains to London Waterloo.

Features

- First Floor
- Communal Gardens
- Central Kingston
- Lift Access
- Unfurnished
- No Parking

Royal Quarter, Kingston Upon Thames, KT2



Total area (approx.): 42.6 sq. m (458.5 sq. ft)