



**Connells**

Woodpecker Close  
Great Barford Bedford



# Woodpecker Close Great Barford Bedford MK44 3BG

for sale  
**£675,000**



## Property Description

Stunning Four Bedroom Detached Home in a Peaceful Great Barford Cul-de-Sac

Set within a quiet cul-de-sac in the sought-after village of Great Barford, this impressive four-bedroom detached family home offers approximately 1,750 sq. ft. of modern, well-appointed living space-perfect for growing families and those seeking a tranquil, high-quality lifestyle.

Upon entering, you are welcomed by a spacious entrance hall that leads to a study, ideal for home working, a separate dining room, and a bright, inviting lounge. To the left of the property, you'll find a beautifully designed open-plan kitchen and breakfast room, recently fitted with high-spec appliances and offering an excellent space for everyday living and entertaining. A useful utility room completes the ground floor accommodation.

The first floor features a generous main bedroom with its own en-suite, providing a private retreat. Three further well-proportioned bedrooms are served by the modern family bathroom, ensuring ample space and comfort for the whole household.

Externally, the property continues to impress with a double garage equipped with an electric car charging port, as well as ample off-road parking. The enclosed rear garden is of a generous size and sits on an excellent plot-ideal for families, outdoor entertaining, or simply enjoying the peaceful surroundings.

This is a rare opportunity to secure a modern, spacious home in a highly desirable location. Early viewing is strongly recommended!

**Entrance Hall**

**Cloakroom**

**Office**

**Lounge**

**Dining Room**

**Kitchen/breakfast room**

**Utility Room**

**First Floor**

**Landing**

**Bedroom One**

**Ensuite**

**Bedroom Two**

**Bedroom Three**

**Bedroom Four**

**Bathroom**

**External**

**Front Garden**

**Rear Garden**

**Parking**

**Double Garage**



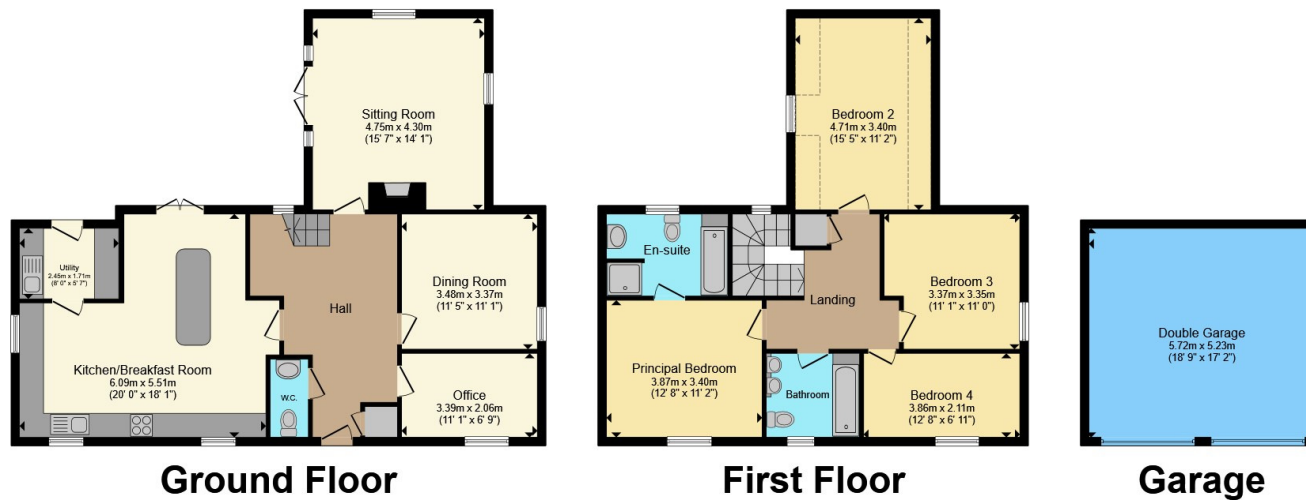












Total floor area 196.2 m<sup>2</sup> (2,112 sq.ft.) approx

This floor plan is for illustrative purposes only. It is not drawn to scale. Any measurements, floor areas (including any total floor area), openings and orientation are approximate. No details are guaranteed, they cannot be relied upon for any purpose and they do not form part of any agreement. No liability is taken for any error, omission or misstatement. A party must rely upon its own inspection(s). Powered by [www.propertybox.io](http://www.propertybox.io)

**Connells**

To view this property please contact Connells on

**T 01234 345 303**  
**E [bedford@connells.co.uk](mailto:bedford@connells.co.uk)**

42 Allhallows  
 BEDFORD MK40 1LN

EPC Rating: C Council Tax  
 Band: F

Tenure: Freehold

**view this property online [connells.co.uk/Property/BED312850](http://connells.co.uk/Property/BED312850)**



1. MONEY LAUNDERING REGULATIONS Intending purchasers will be asked to produce identification documentation at a later stage and we would ask for your co-operation in order that there will be no delay in agreeing the sale. 2. These particulars do not constitute part or all of an offer or contract. 3. The measurements indicated are supplied for guidance only and as such must be considered incorrect. Potential buyers are advised to recheck measurements before committing to any expense. 4. We have not tested any apparatus, equipment, fixtures, fittings or services and it is in the buyers interest to check the working condition of any appliances.

Connells Residential is registered in England and Wales under company number 1489613, Registered Office is Cumbria House, 16-20 Hockliffe Street, Leighton Buzzard, Bedfordshire, LU7 1GN. VAT Registration Number is 500 2481 05.

**See all our properties at [www.connells.co.uk](http://www.connells.co.uk) | [www.rightmove.co.uk](http://www.rightmove.co.uk) | [www.zoopla.co.uk](http://www.zoopla.co.uk)**

Property Ref: BED312850 - 0005