



Maples Place, E1

£400,000

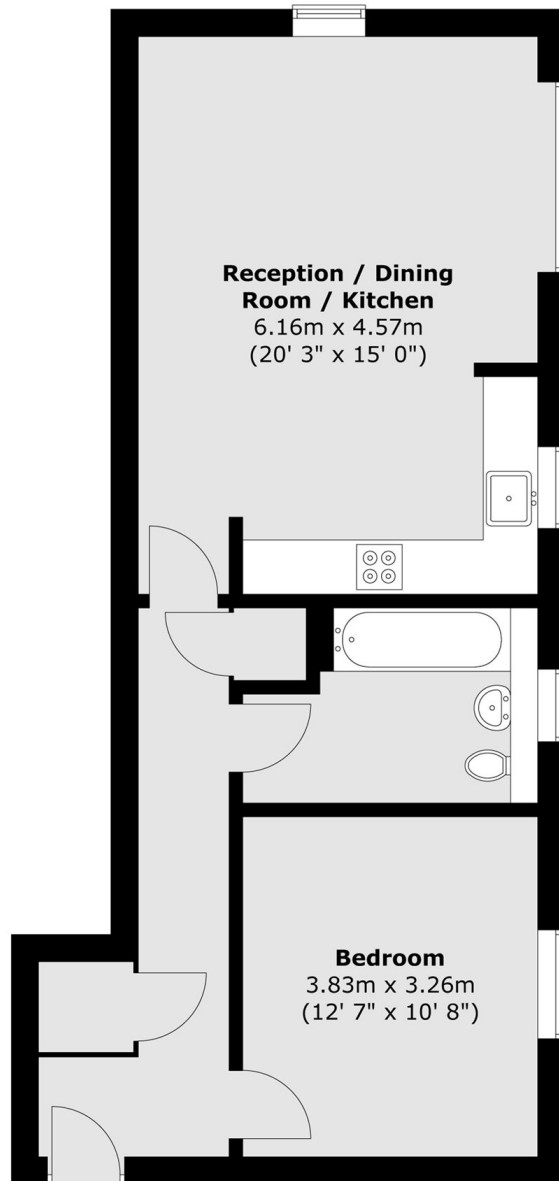
One bedroom apartment set in a sought after location. The apartment has a large open plan living area with ample space to dine and a fully integrated kitchen. The bedroom is a significant double with built in storage and the hallway has the family bathroom and plenty of additional storage. The apartment has a generous amount of natural light as the property occupies the corner of the building so is dual aspect.

Situated in the heart of Whitechapel, the development benefits from a wide range of transport links, with Whitechapel station just a short walk away providing access to the Elizabeth Line, District, Hammersmith & City, and London Overground services. The area has an array of popular bars, restaurants and entertainment venues within a short distance in the City and Shoreditch.

Features

- Large one bedroom apartment
- Bright interiors
- Sought after location
- Private development
- Great transport links

Maples Place, London, E1



Total area (approx.) : 56 sq. m (604 sq. ft)