



Aberavon Road, Tredegar Square Conservation Area E3

London

£4,500 pcm



Aberavon Road, Tredegar Square Conservation Area E3

Truly beautiful three-storey Georgian townhouse situated within the prestigious Tredegar Square conservation area, just moments from Mile End underground station.

- Two/Three Bedroom Georgian Townhouse
- Period House with Stunning Modern Finish
- Spectacular Open-Plan Kitchen/Dining/Living Space
- Landscaped Rear Garden
- Tredegar Square Conservation Area
- Mile End Station Just Moments Away
- Unfurnished
- Available from 4th September 2026





Truly beautiful three-storey Georgian townhouse situated within the prestigious Tredegar Square conservation area, just moments from Mile End underground station.

This unique house encompasses all of the period charm you would expect while simultaneously brimming with spectacular modern energy throughout – it is no wonder that this property has recently featured in 25 Beautiful Homes and Good Homes magazines.

Comprising of a grand entrance hallway on the raised ground floor, there are two receptions that can act as third and fourth bedrooms, both with original wide stripped floorboards, fabulous fireplaces and bespoke shutters to the multi-paned sash windows. There is also a modern wet room / guest WC on this level.

Upstairs there are two double bedrooms and a gorgeous family bathroom with a stand-alone bath and free-standing tap, separate shower enclosure, bespoke shutters and underfloor heating.

The lower ground floor is absolutely stunning and completely open-plan, consisting of the kitchen, dining area and living / entertaining space. There is underfloor heating, reclaimed parquet flooring, excellent storage and bi-folding concertina doors which open directly out to the peaceful landscaped rear garden.

Aberavon Road is well placed for the amenities of Roman Road, the wonderful Victoria Park and a host of various transport links close at hand.

Perfectly suited to a couple or a family, this property is available from 4th September 2026 and is offered unfurnished.

Council Tax band: F



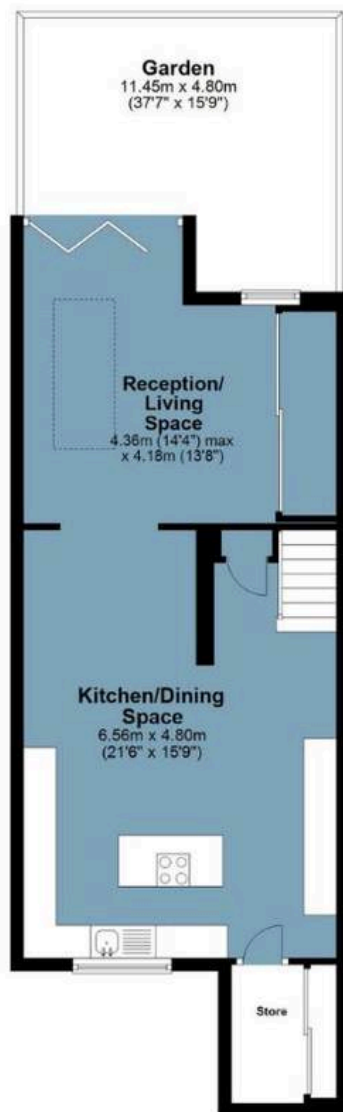




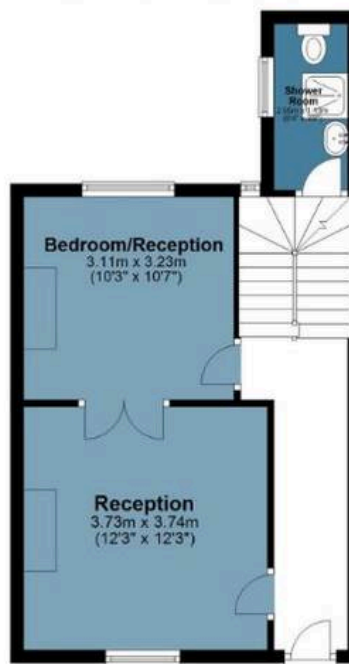
Aberavon Road

Approx. Gross Internal Area 131 sq. metres (1409.7 sq. feet)

Lower Ground Floor
Approx. 54.4 sq. metres (588.0 sq. feet)



Ground Floor
Approx. 37.5 sq. metres (403.7 sq. feet)



First Floor
Approx. 39.0 sq. metres (420.0 sq. feet)



Measurements are approximate and for illustration purposes only. While we do not doubt the accuracy and completeness, we advise you conduct a careful independent assessment of the property to determine monetary value

FROM EAST LONDON ENERGY TO WEST ESSEX EASE

We Make Moving Home Easy.

At Butler and Stag, we do more than just connect London to West Essex – we make the move seamless. With offices spanning from vibrant East London to the tranquillity of West Essex, we understand the nuances of each area and the journey people take between them. Our marketing goes beyond standard listings, showcasing every property with precision, creativity, and reach that others simply can't match. Coupled with an unparalleled attention to detail, from first enquiry to final move-in, we ensure every client and customer feels informed, supported, and confident. Simply put, we do the little things that make a big difference, setting us apart in every step of the property experience.



LONDON STRATFORD SOUTH WOODFORD BUCKHURST HILL LOUGHTON EPPING BEYOND

Like what you see? Let's talk

Book your **FREE** valuation now



020 8102 1236

london@butlerandstag.com

508 Roman Road, Bow, London, E3 5LU

butlerandstag.uk

IMPORTANT NOTICE - These particulars have been prepared in good faith and they are not intended to constitute part of an offer or contract. We have not performed a structural survey on this property and the services, appliances and specific fittings have not been tested. All photographs, measurements, floor plans and distances referred to are given as a guide and should not be relied upon.

BUTLER & STAG

