



## Moulding Lane, SE14

£325,000

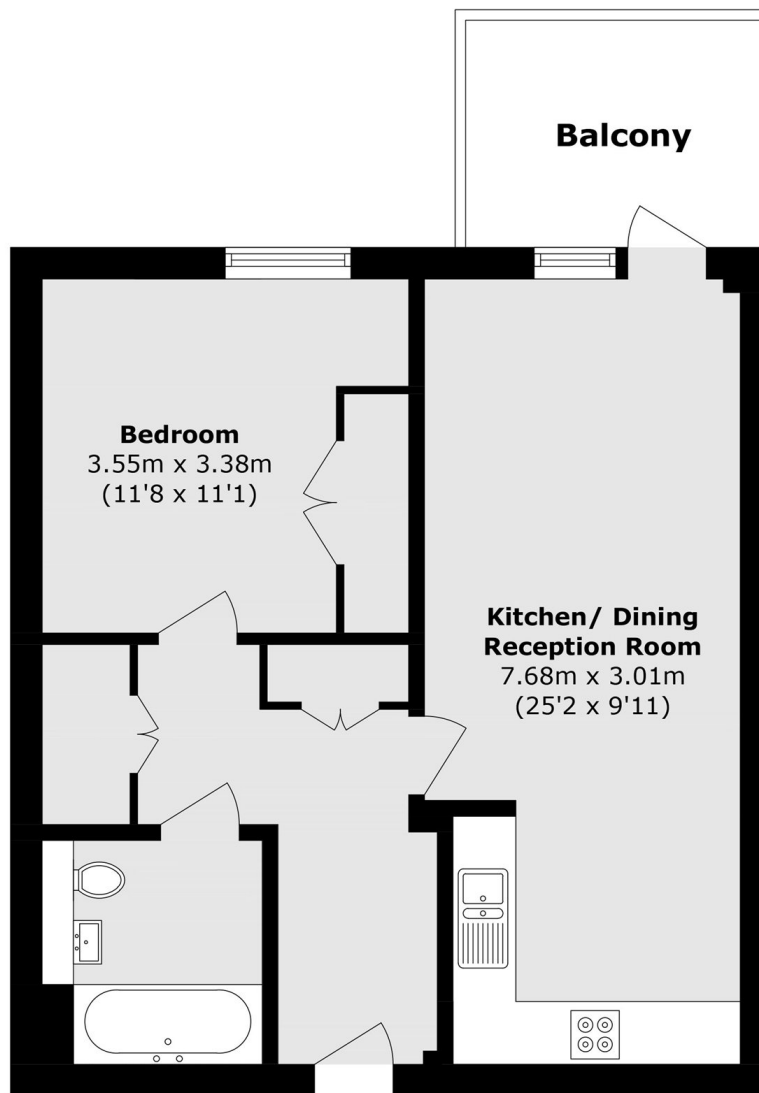
Stunning apartment located within the highly regarded Deptford Anthology development. Offering its own large open plan reception room with a private south facing balcony which offers an abundance of light.

Deptford Anthology is located around 0.5 miles from both New Cross Mainline/Overground and Deptford High Street Mainline stations, providing access to central London within 15 minutes. Deptford High Street is known for its trendy bars and cafe's, as well as the Deptford Market.

### Features

- One Bedroom Apartment
- Private Balcony
- Open Plan Living Room
- Secure Entry System and Lift
- Long lease
- Close To Transport Links

# Moulding Lane, London, SE14



Total area (approx.): 51.1. sq. m 550.0 sq. ft)

Balcony area (approx.): 6.1 sq. m (65.6 sq. ft)