



27 Lockwood Chase
Milton Keynes, MK4 4ER



William Coulson
Partnered With
Simpsons
Property Experts

A detached five-bedroom family home in a highly sought-after Lockwood Chase position, enjoying close proximity to open green space and offered with no onward chain. The property is ideally placed for well-regarded local schools, everyday amenities, and convenient transport links, making it a superb choice for modern family living. Arranged over three floors, it provides generous and versatile accommodation, complemented by a private rear garden, garage and driveway parking.

The ground floor comprises a welcoming entrance hall leading to a kitchen/dining room with direct access to the garden, ideal for both family life and entertaining. There is a separate living/dining room, a useful ground-floor study, and additional practical storage.

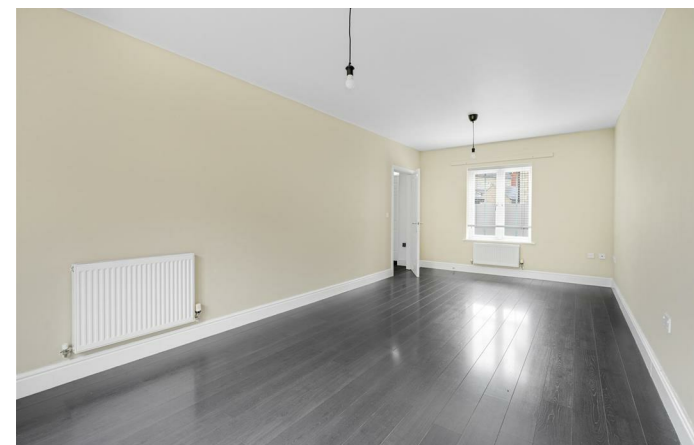
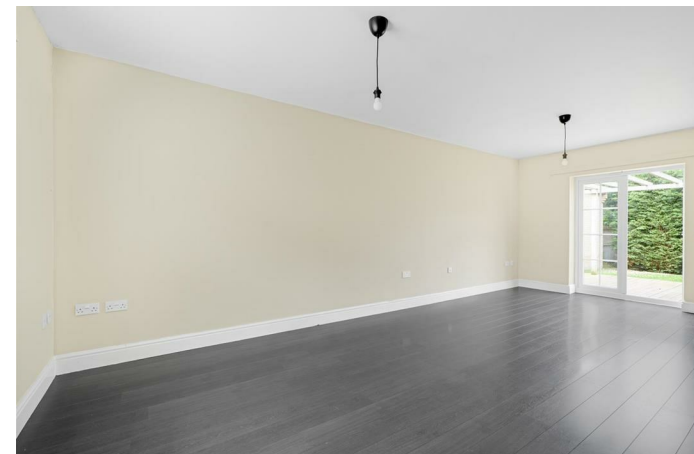
On the first floor is the principal bedroom suite, complete with dressing area, alongside further well-proportioned accommodation. The top floor offers two additional bedrooms, both served by a Jack-and-Jill en-suite, providing excellent flexibility for family or guest use.

Externally, the property benefits from a private, mature-screened rear garden, offering a good degree of seclusion and outdoor space. To the front, there is a driveway providing off-street parking and access to a garage.

Further practical benefits include (if applicable): garden aspect and dimensions, garage power and lighting, broadband availability, and convenient walking distances to nearby schools, shops, and green spaces.

£600,000

 5  3  2





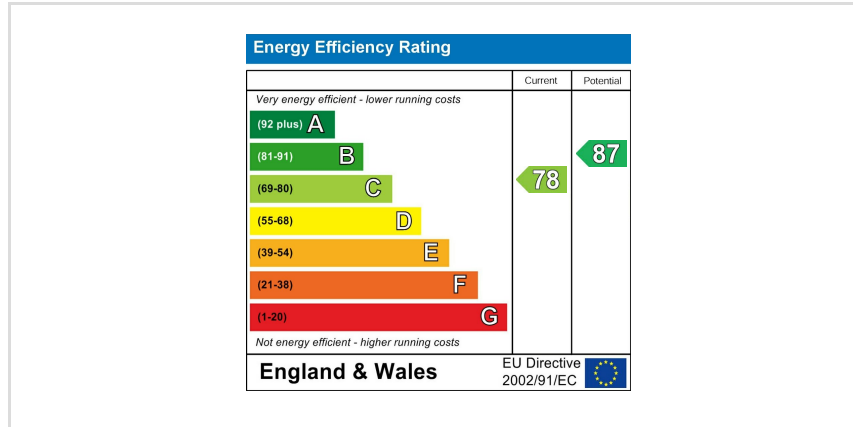
1ST FLOOR



GROUND FLOOR

GARAGE

TOTAL: 1602 sq. ft
 GARAGE: 0 sq. ft, GROUND FLOOR: 608 sq. ft, 1ST FLOOR: 601 sq. ft, 2ND FLOOR: 393 sq. ft
 EXCLUDED AREAS: GARAGE: 139 sq. ft, " " : 22 sq. ft, LOW CEILING: 50 sq. ft,
 WALLS: 168 sq. ft





William Coulson
Partnered With

Simpsons
Property Experts

Tel: 01908 040289

Email: william.coulson@simpsonspropertyexperts.co.uk

Web: <https://simpsonspropertyexperts.co.uk/our-locations/milton-keynes>

