



Ravensbourne Gardens, Clayhall, Ilford, IG5

Spencer Munson are pleased to offer you this three bedroom detached house with amazing view over Repton Park and close to primary and secondary schools. This property is based minutes from the busy high road of Barkingside, Modern kitchen and bathroom. This property is offered on unfurnished basis being available now. Gas C/H. Garage. Off street parking. EPC Rating D. Council tax band: D

Rent: £2,300 - Monthly



Ravensbourne Gardens, Clayhall, Ilford, IG5

Through Lounge



Kitchen



Ground Floor Wet Room



Master Bedroom



Bedroom 2



Bedroom 3



Family bathroom

Garage

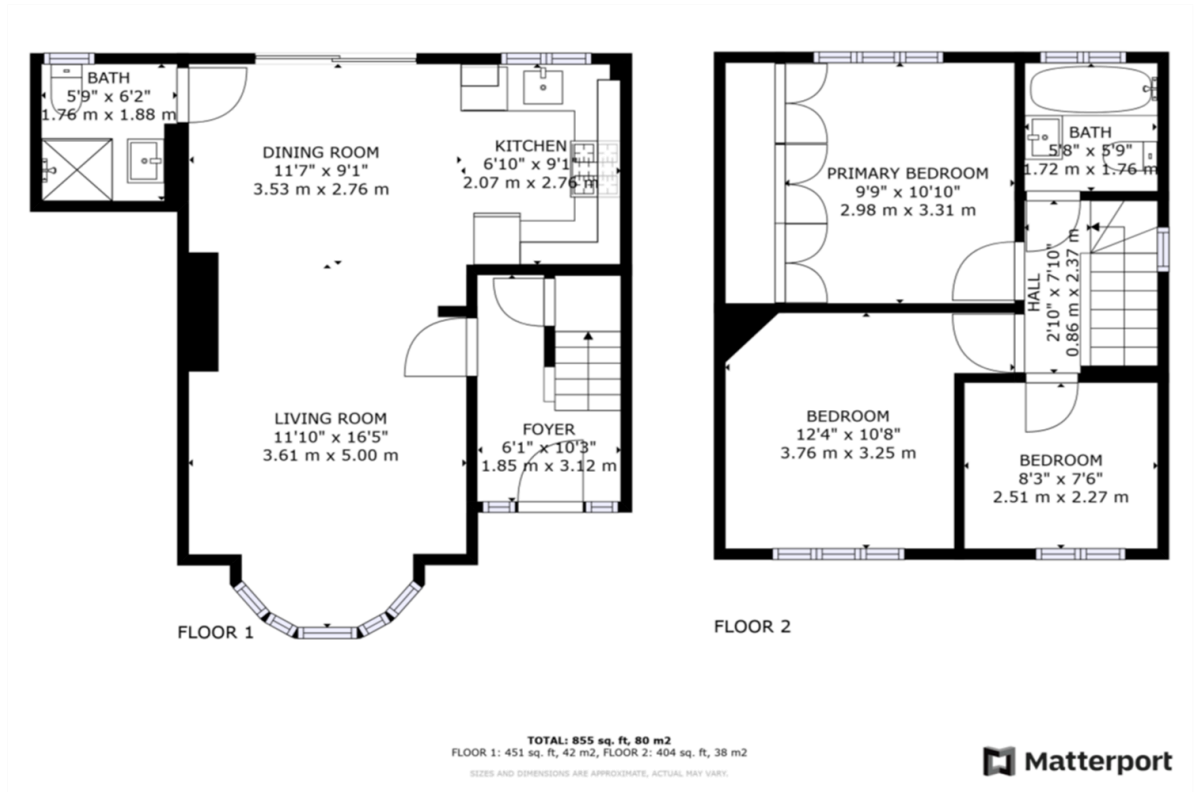
Garden



Energy Efficiency Rating		Current	Potential
<i>Very energy efficient - lower running costs</i>			
92-100	A		
81-91	B		84
69-80	C		
55-68	D	58	
39-54	E		
21-38	F		
1-20	G		
<i>Not energy efficient - higher running costs</i>			

Spencer Munson are pleased to offer you this three bedroom detached house with amazing view over Repton Park and close to primary and secondary schools. This property is based minutes from the busy high road of Barningside, Modern kitchen and bathroom. This property is offered on unfurnished basis being available now. Gas C/H. Garage. Off street parking. EPC Rating D. Council tax band: D

Ravensbourne Gardens, Clayhall, Ilford, IG5



Disclaimer

These particulars are intended to give a fair and substantially correct overall description for the guidance of intending tenants/purchasers and do not constitute an offer or part of a contract. Prospective tenants/purchasers and/or lessees should seek their own professional advice. All descriptions, dimensions, reference to condition, fixtures, fittings and necessary permissions for use and occupation and other details are given in good faith and are believed to be correct. However, intending tenants/purchasers should not rely on them as statements or representations of fact, but must satisfy themselves by inspection or otherwise as to the correctness of each of them. Fixtures and fittings shown in pictures and on viewings may well not be included in any tenancy/sale and any prospective tenant/purchaser must clarify this for themselves. All measurements and floorplans are approximate and produced as a guide in good faith. Please note that some of the furniture and decor items shown in these images have been digitally added using AI technology for illustrative purposes. The actual property may differ in appearance. Prospective buyers or renters are encouraged to visit the property in person to get an accurate representation.