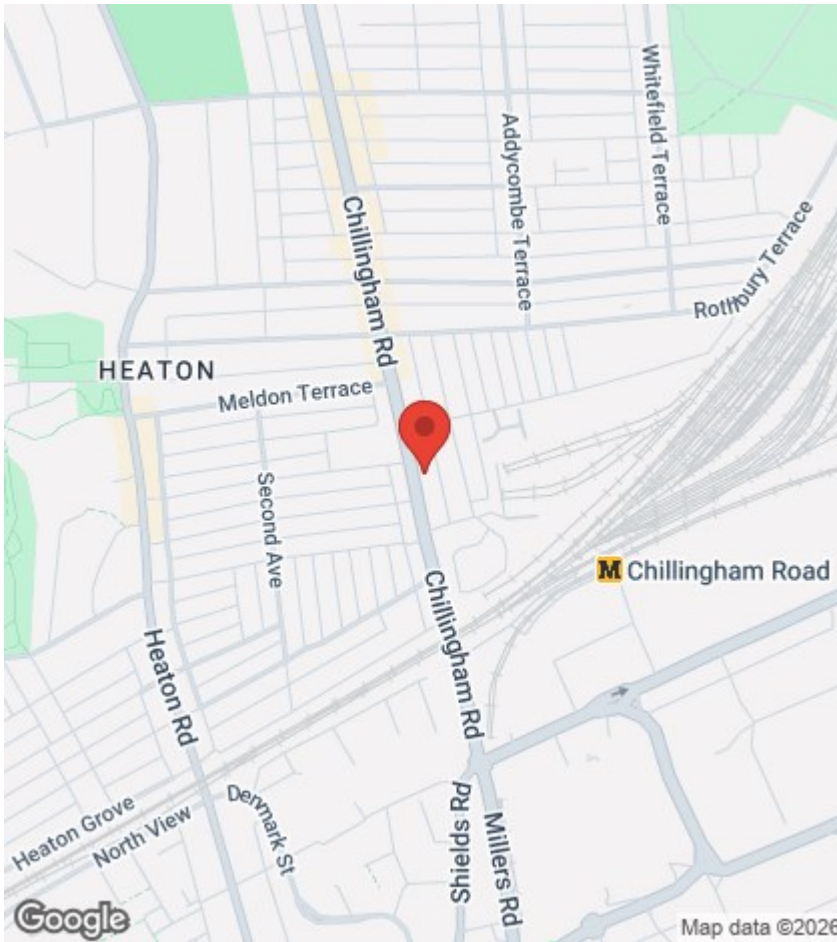




Chillingham Road, Newcastle Upon Tyne NE6 5BT

£975 Per Calendar Month

- HEATON
- GROUND FLOOR FLAT
- FURNISHED
- TWO BEDROOMS
- YARD TO REAR
- GAS CENTRAL HEATING



## Viewings

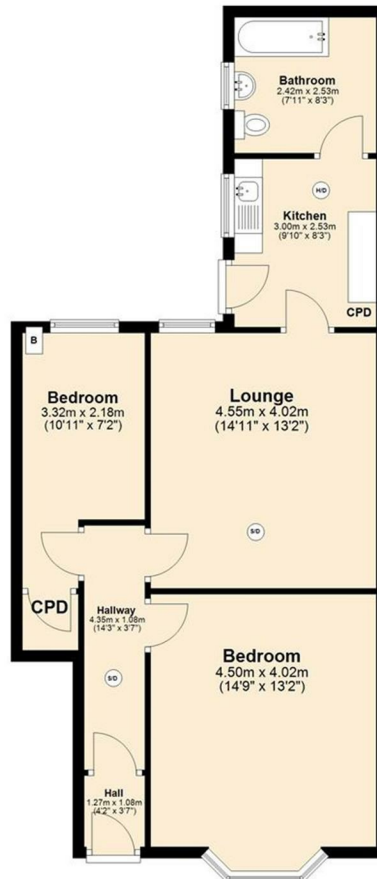
Viewings by arrangement only. Call 0191 2401818 to make an appointment.

## Council Tax Band:

## EPC Rating:

C

Energy Efficiency Rating		Current	Potential
Very energy efficient - lower running costs			
(92 plus) A			
(81-91) B			
(69-80) C		71	77
(55-68) D			
(39-54) E			
(21-38) F			
(1-20) G			
Not energy efficient - higher running costs			
<b>England &amp; Wales</b>		EU Directive 2002/91/EC	



Total area: approx. 66.6 sq. metres (717.0 sq. feet)

This floor plan is for illustrative purposes only and is not drawn to scale. Measurements of benches, stairways, openings etc are approximate. They should not be relied upon for any purpose and do not form part of any agreement. No liability is taken for any error or mis-statement.