

HUNTERS[®]

HERE TO GET *you* THERE



Doulton Way

Whitchurch, Bristol, BS14 9YD

£1,350 Per Month



Hunters are happy to introduce this two bedroom semi detached home for let offering plenty of space. The house is located within Whitchurch and boasts straight forward access to local shops and amenities as well as access to nearby retail parks offering a wider choice of retail outlets including supermarkets.

Leisure facilities also leisure centre and plenty of places to eat and socialise. Transport links lead into the city as well as out of the area to places further afield making this an ideal place for anyone who needs to commute in and out Bristol. The house itself offers a welcoming entrance hall, light and spacious living room, sociable kitchen diner and a handy utility room facilities. On the upper floor you will find two double bedrooms and bathroom.

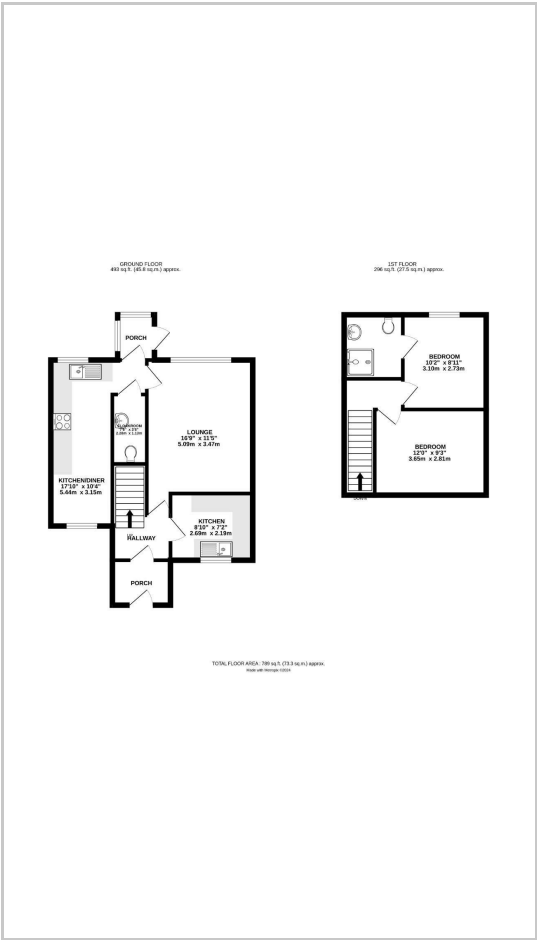
income requirement- £42,000



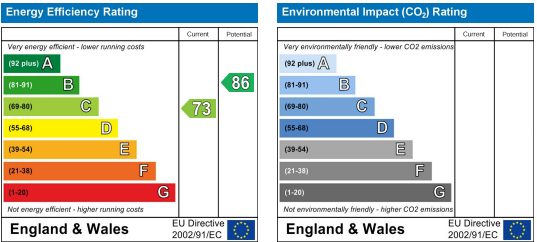
Area Map



Floor Plans



Energy Efficiency Graph



These particulars are intended to give a fair and reliable description of the property but no responsibility for any inaccuracy or error can be accepted and do not constitute an offer or contract. We have not tested any services or appliances (including central heating if fitted) referred to in these particulars and the purchasers are advised to satisfy themselves as to the working order and condition. If a property is unoccupied at any time there may be reconnection charges for any switched off/disconnected or drained services or appliances - All measurements are approximate. **THINKING OF SELLING?** If you are thinking of selling your home or just curious to discover the value of your property, Hunters would be pleased to provide free, no obligation sales and marketing advice. Even if your home is outside the area covered by our local offices we can arrange a Market Appraisal through our national network of Hunters estate agents.