



Living  
made  
better

Sienna Alto  
Lewisham, SE13 7FZ



Offers In Excess Of £425,000

# Sienna Alto, Lewisham, SE13 7FZ

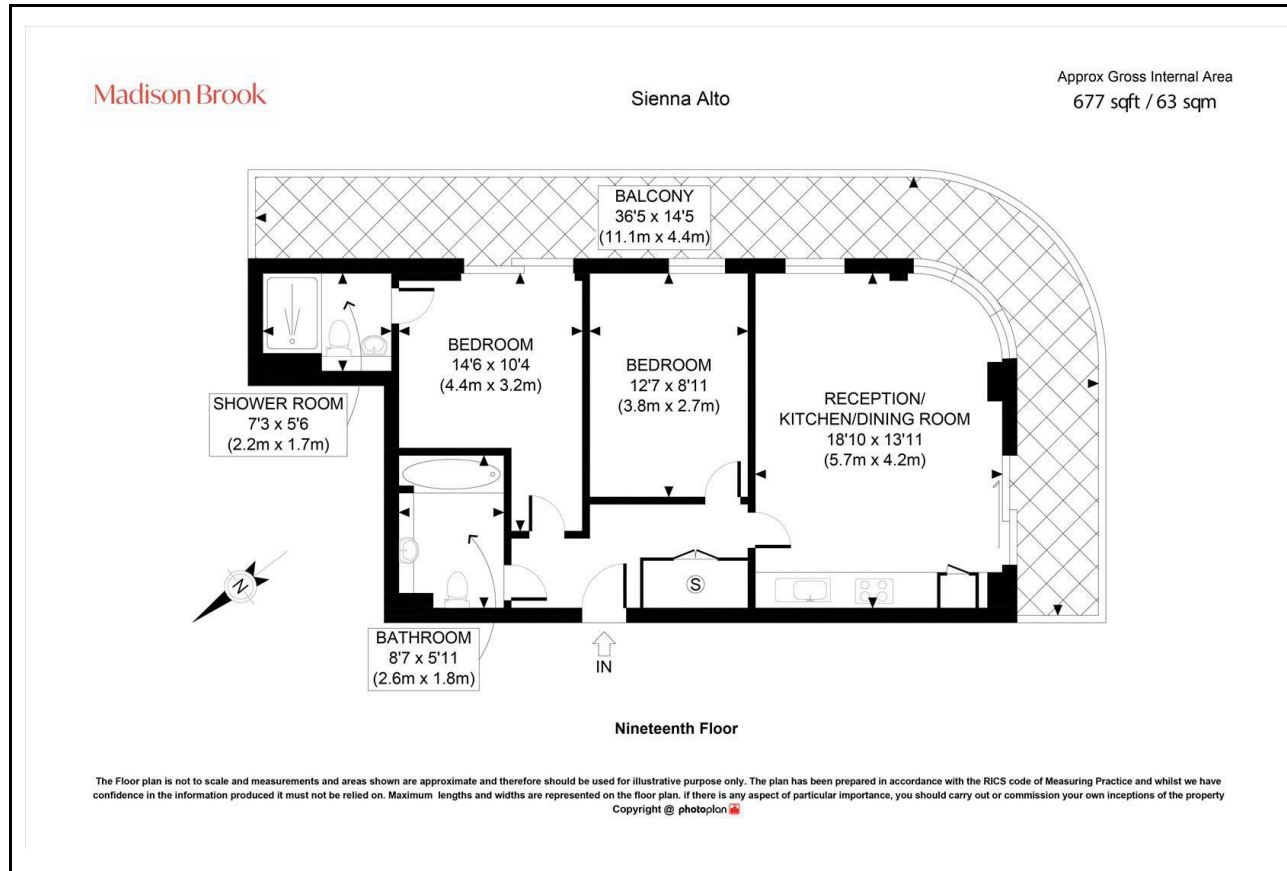
Madison Brook

## Property Summary

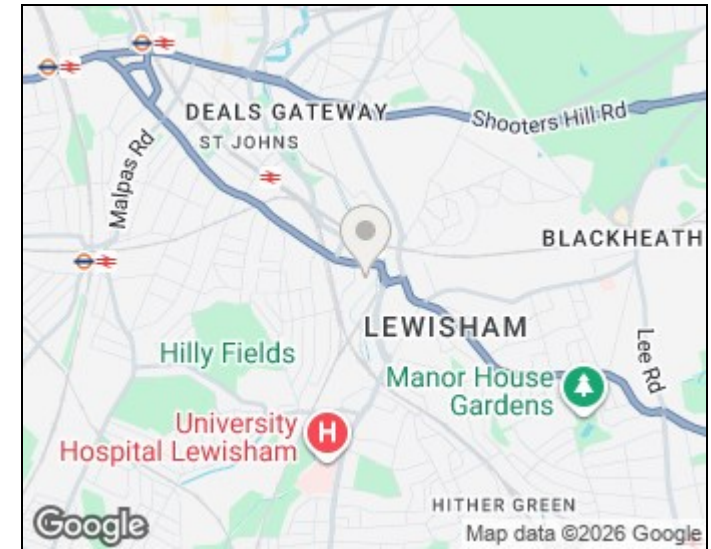
Set on the 19th floor of Sienna Alto, this modern two-bedroom apartment offers 677 sq. ft. of bright living space with a south-east facing wraparound balcony and far-reaching skyline views. The property features an open-plan reception/kitchen, two double bedrooms including a principal suite with en-suite shower room, a contemporary family bathroom, and useful hallway storage. Residents benefit from a 24-hour concierge, communal terrace, and an excellent location just 0.2 miles from Lewisham Station.

Service charge: £2,858.98 pa | Ground rent: £470.20 pa | Lease: 112 years remaining

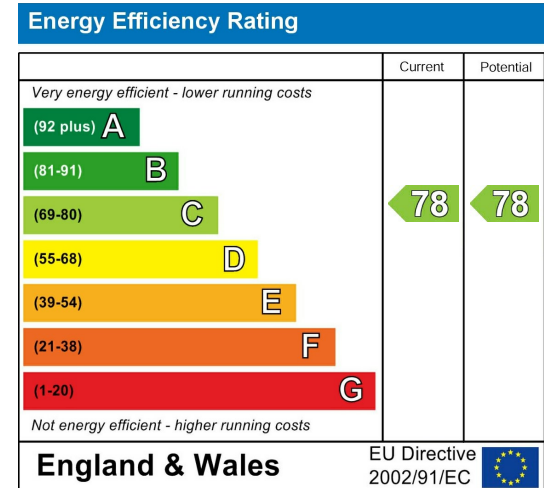
## Floorplan



## Area Map



## Energy Efficiency Graph



These particulars, whilst believed to be accurate are set out as a general outline only for guidance and do not constitute any part of an offer or contract. Intending purchasers should not rely on them as statements of representation of fact, but must satisfy themselves by inspection or otherwise as to their accuracy. No person in this firm's employment has the authority to make or give any representation or warranty in respect of the property.

43 Loampit Vale, Lewisham, London, SE13 7FT

Tel: 020 3946 6200 Email:

lewisham@madisonbrook.com

<https://madisonbrook.com/>