

Pengwern Cottage, Llanefydd, Denbigh, LL16 5ED

£349,950

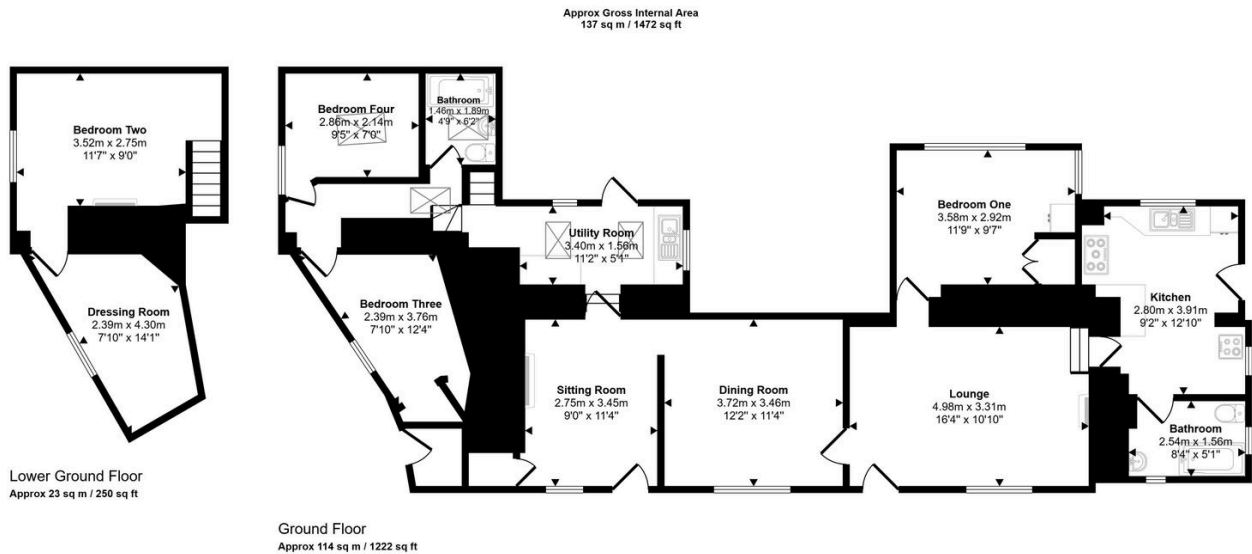
🛏️ 3 🍷 2 🚗 3



This enchanting four bedroom property, brimming with character and steeped in history, is situated in the heart of Llanefydd village, nine miles from Abergele and with its own community centre and popular inn. The quaint stone cottage is spread over two floors and radiates so many special features including exposed beams, 'wattle and daub' traditional screening, Inglenook fireplaces and a pretty cottage garden. Pengwern is one of three ancient houses in the village and is difficult to date but an historian has dated the oak timbers to the early 1600s. It may well be that the walls of the original building are even older. Occupants would have housed their cattle in the lowest of the rooms and people would inhabit the other two. Such an exceptional property has to be viewed to appreciate its uniqueness.

Key Features

- Gorgeous country cottage
- Heart of rural village
- Distant coastal views
- Plenty of traditional features
- Beautiful garden
- Surprisingly spacious
- Four bedrooms
- Freehold
- EPC rating - F
- Council tax band - D



This floorplan is only for illustrative purposes and is not to scale. Measurements of rooms, doors, windows, and any items are approximate and no responsibility is taken for any error, omission or mis-statement. Icons of items such as bathroom suites are representations only and may not look like the real items. Made with Made Snappy 360.