



Price

£675,000

Freehold

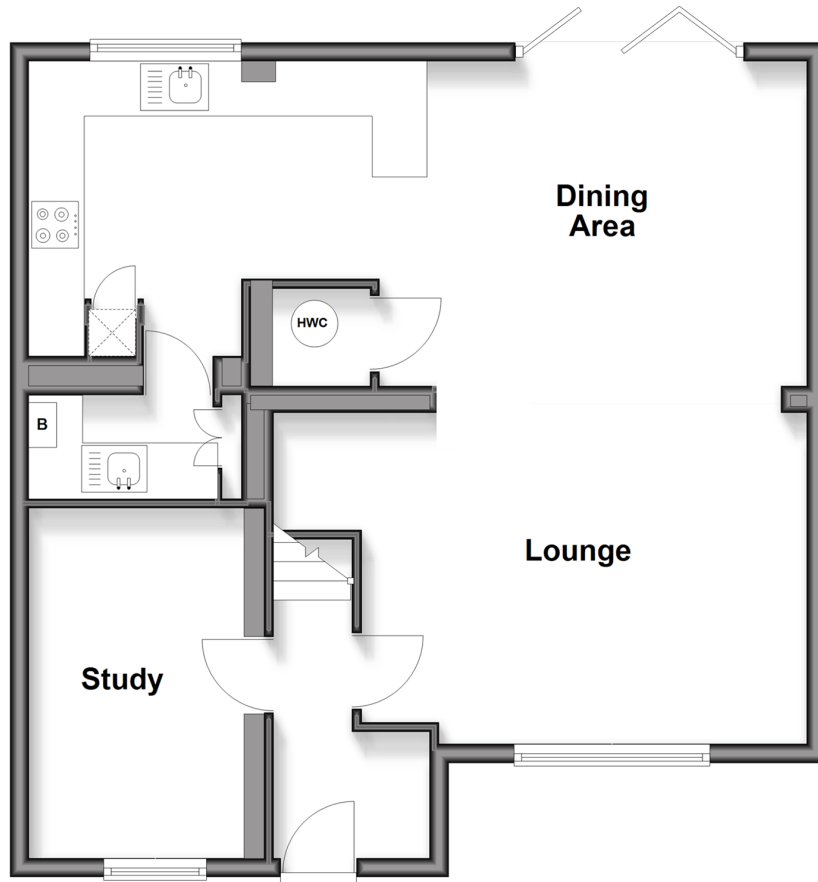
3x  2x  2x 

**Park Road, Redhill,
Surrey, RH1**

cubitt & west
Helping you move forwards

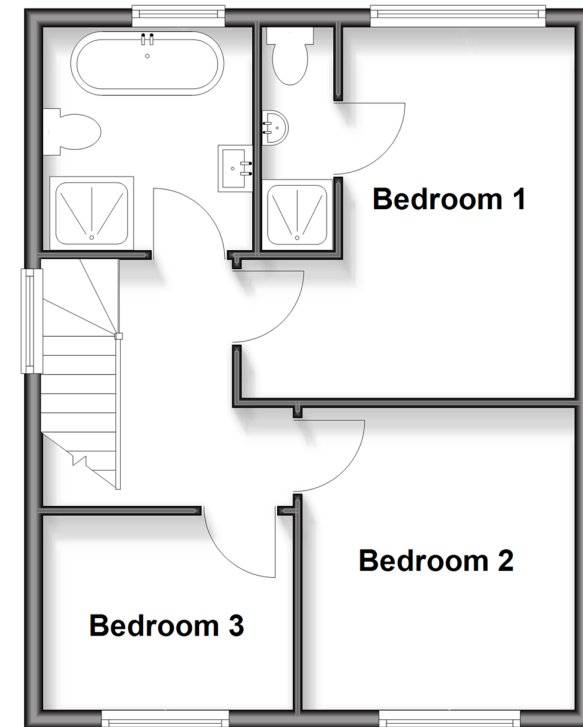
Ground Floor

Approx. 65.4 sq. metres (703.5 sq. feet)



First Floor

Approx. 41.6 sq. metres (447.5 sq. feet)



Accommodation

GROUND FLOOR

Entrance Hall

Study: 17'4 x 8'7 (5.29m x 2.62m)

Lounge: 18'10 x 11'8 (5.74m x 3.56m)

Dining Area: 11'10 x 9'11 (3.61m x 3.02m)

Kitchen: 21'11 x 16'7 (6.68m x 5.06m)

FIRST FLOOR

Landing

Bedroom 1: 11'5 x 10'9 (3.48m x 3.28m)

En Suite Shower Room

Bedroom 2: 10'9 x 9'9 (3.28m x 2.97m)

Bedroom 3: 8'10 x 7'0 (2.69m x 2.14m)

Bathroom

OUTSIDE

Driveway

Rear Garden



Main features

- Thoughtfully and stylishly renovated throughout
- Kitchen finished to a high standard with integrated appliances
- Separate utility room
- Bi-fold doors opening onto the rear garden
- Converted garage offering a versatile fourth bedroom or playroom/home office
- Ample driveway parking for multiple cars
- Located in a sought-after area



Nearest Schools

Primary Schools: St Matthew's CofE Primary 0.1 miles, St Joseph's Catholic Primary, Redhill 0.3 miles, Wray Common Primary 0.4 miles
Secondary Schools: St Bede's 0.3 miles, The Warwick 0.5 miles, Royal Alexandra and Albert School 1.0 miles



Transport Information

Train Stations: Redhill 0.4 miles, Earlswood 1.2 miles, Reigate 1.3 miles



Address

Park Road, Redhill, Surrey, RH1



Directions

For directions to this property please contact us.



cubitt&west
Helping you move forwards

Call Redhill Branch 01737 778866 ■ cubittandwest.co.uk



■ Legal advice should be taken to verify fixtures/fittings, planning, alterations and/or lease details ■ Appliances & services are untested, dimensions are approximate and floor plans are not to scale



23411655/20260106/AB/JB2