



7 Dove Close, Andover, SP10 5PB
Asking Price £399,995



7 Dove Close, Andover,
Asking Price £399,995

PROPERTY DESCRIPTION BY Miss Molly Scruton

This beautifully presented four-bedroom detached townhouse offers an exceptional blend of space, style and versatility, with thoughtfully arranged accommodation spanning three floors. Designed to suit the demands of modern family life, the property provides a superb balance of generous living areas and flexible accommodation.

Upon entering, a welcoming entrance hall sets the tone for the home, leading through to an impressive sitting and dining room. This elegant reception space is both bright and spacious, providing the perfect environment for everyday living, entertaining guests or enjoying family gatherings. To the rear, the well-appointed kitchen features an extensive range of cabinetry and ample worktop space, seamlessly connecting to the conservatory. Flooded with natural light and overlooking the garden, this additional reception area creates a wonderful year-round living space, ideal for relaxing, dining or socialising. A convenient cloakroom completes the ground floor accommodation.

The first floor hosts a superb principal bedroom, offering generous proportions and the added luxury of a private en-suite shower room. Two further well-sized bedrooms are also situated on this level and are served by a stylish family bathroom, providing excellent flexibility for growing families, guests or those requiring home-working space.

Occupying the entire second floor, the fourth bedroom is an impressive and versatile room that could equally serve as a guest suite, teenager's retreat, home office or hobby room, adding further appeal to this adaptable home.

Externally, the property continues to impress. A private driveway provides off-road parking and leads to the garage, which has been extended to the rear to create a highly practical additional space. Whether utilised as a workshop, studio, gym or substantial storage area, this extension enhances the property's versatility and functionality. The rear garden is attractively enclosed and enjoys a good degree of privacy, creating a delightful setting for outdoor entertaining, al fresco dining or simply unwinding in the warmer months.



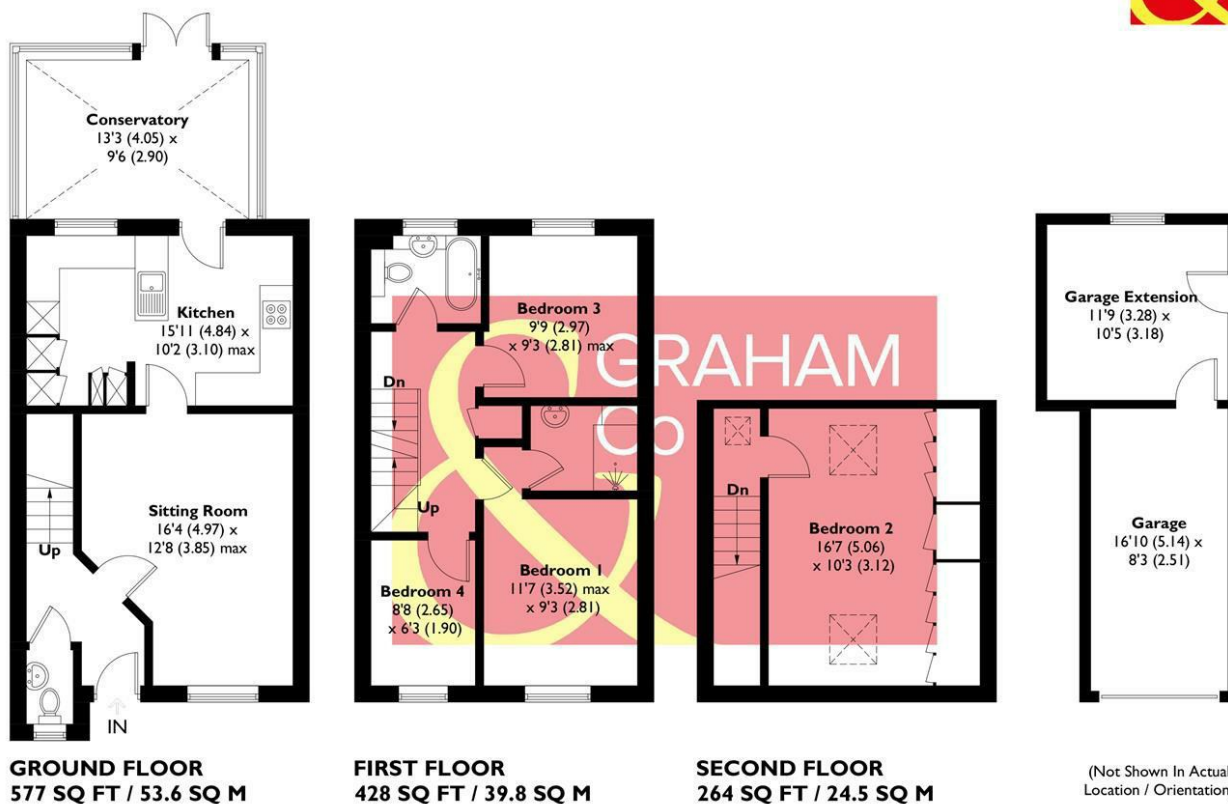


Andover offers a good range of shopping and recreational facilities including a theatre, cinema, new leisure centre, excellent selection of schools and a college for higher education. An abundance of open space and land with a selection of local nature reserve's all within walking distance of the town centre. The town itself boasts a lovely "market town" feel and everything you may need is close at hand. The mainline train station offers a fast service to London Waterloo in just over an hour, and the A303 gives access to London via the M3 and the West Country.





APPROXIMATE GROSS INTERNAL AREA = 1269 SQ FT / 117.9 SQ M
GARAGE = 256 SQ FT / 23.8 SQ M
TOTAL = 1525 SQ FT / 141.7 SQ M

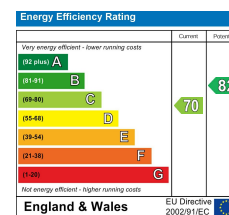


This plan is for layout guidance only. Not drawn to scale unless stated. Windows and door openings are approximate. Whilst every care is taken in the preparation of this plan, please check all dimensions, shapes and compass bearings before making any decisions reliant upon them. Created by Emzo Marketing (ID1297783)
Produced for Graham & Co

MORTGAGE ADVICE Across The Market Mortgages

An independent Mortgage brokerage offering expert advice from across the whole market. Whether you are a first-time buyer, home mover, remortgaging or buying a Buy-To-Let investment. Tristan can provide expert & reliable advice, in a clear jargon free language. Book a free consultation today.

E - tristan@atmmortgages.com M - 07545320380 www.atmmortgages.com



Tax Band: D



OPEN 7 DAYS

If you are considering selling your home please contact us today for your free no obligation valuation

01264 356500

IMPORTANT: we would like to inform prospective purchasers that these sales particulars have been prepared as a general guide only. A detailed survey has not been carried out, nor the services, appliances and fittings tested. Room sizes should not be relied upon for furnishing purposes and are approximate. If floor plans are included, they are for guidance only and illustration purposes only and may not be to scale. If there are any important matters likely to affect your decision to buy, please contact us before viewing the property.

