



Stapleton Close, Highworth, SN6 7DR

£290,000
(Subject to Contract)

Hanley's

Stapleton Close Highworth SN6 7DR

A well presented three bedroom semi-detached property situated in a popular cul-de-sac location a short walk from the High Street, schools and local amenities. Set in an elevated position, the property benefits from far reaching views to the rear from the first floor. The accommodation comprises: Entrance hall, kitchen/breakfast room with door to the side, living/dining room with French doors opening into the conservatory with door to the rear garden. To the first floor is a spacious, refitted bathroom with bath and shower over and three good sized bedrooms; two with built in wardrobes. The property further benefits from gas radiator central heating and double glazing. Outside to the front is a block paved driveway providing parking for several vehicles leading to the single garage and access to the side leads through to the rear garden via a brick-built enclosed lobby. The rear garden has been paved for low maintenance with a raised patio area.



1 Bathroom



3 Bedrooms



1 Reception

EPC: C 70

Council Tax Band: C

Tenure: Freehold

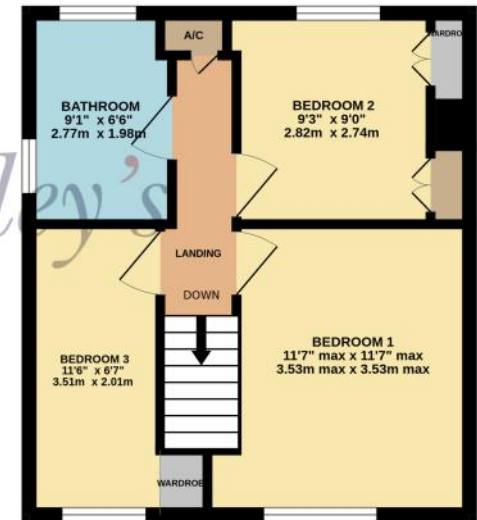
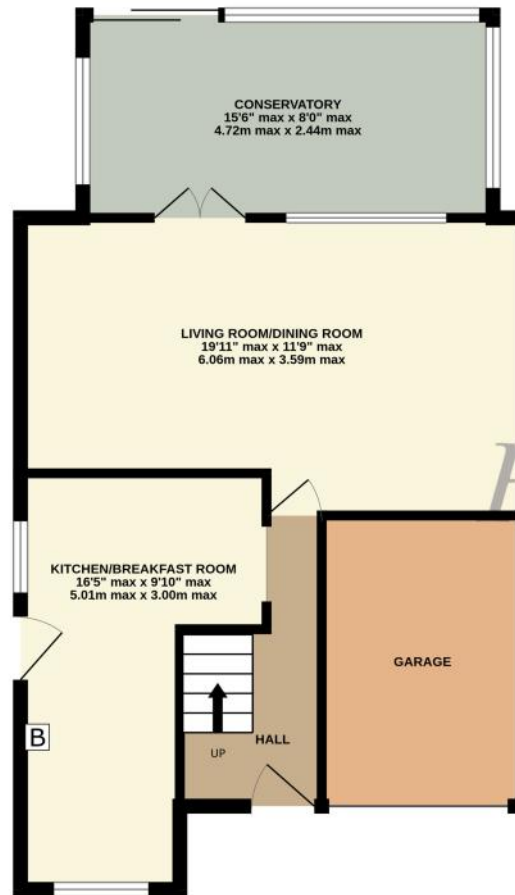


DISCLAIMER. These particulars, whilst believed to be accurate are set out as a general outline for guidance and do not constitute any part of an offer or contract. Intending purchasers should not rely on them as statements or representation of fact, but must satisfy themselves by inspection or otherwise as to their accuracy. No person in this firm's employment has the authority to make or give any representation or warranty in respect of the property. Floor plan measurements and distances are approximate only. We have not carried out a detailed survey nor tested the services, appliances or specific fittings. Your home is at risk if you do not keep up repayments on a mortgage or other loan secured on it.



GROUND FLOOR
613 sq.ft. (56.9 sq.m.) approx.

1ST FLOOR
343 sq.ft. (31.9 sq.m.) approx.



TOTAL FLOOR AREA: 956 sq.ft. (88.8 sq.m.) approx.

Whilst every attempt has been made to ensure the accuracy of the floorplan contained here, measurements of doors, windows, rooms and any other items are approximate and no responsibility is taken for any error, omission or mis-statement. This plan is for illustrative purposes only and should be used as such by any prospective purchaser. The services, systems and appliances shown have not been tested and no guarantee as to their operability or efficiency can be given.

Made with Metropix ©2026

