



**Connells**

Bridge Lofts Leicester Street  
Walsall



# Bridge Lofts Leicester Street Walsall WS1 1PT

for sale  
**£80,000**



## Property Description

Benefiting from no upward chain this two bedroom apartment is ideally positioned for Walsall town centre. Offering a great first time buyer opportunity or investment purchase and briefly comprising of open plan kitchen/lounge, two bedrooms and shower room.

## Shower Room

Having a low level w.c, hand wash basin, shower cubicle, electric towel rail and spotlights.

## Access Via

A communal entrance with stairs to upper floors and further door to:

## Entrance Hall

Having electric heater, spot lights and doors to:

## Kitchen/ Lounge

Having two windows to the front, fitted kitchen with wall and base units and work tops over, stainless steel sink and drainer, electric hob, cooker with cooker hood over, integrated washing machine, dishwasher and fridge/freezer, spot lights and two electric heaters.

## Bedroom One

Having two double glazed windows to the front, spotlights and electric heater.

## Bedroom Two

Having two double glazed windows to the front, electric heater and spotlights.

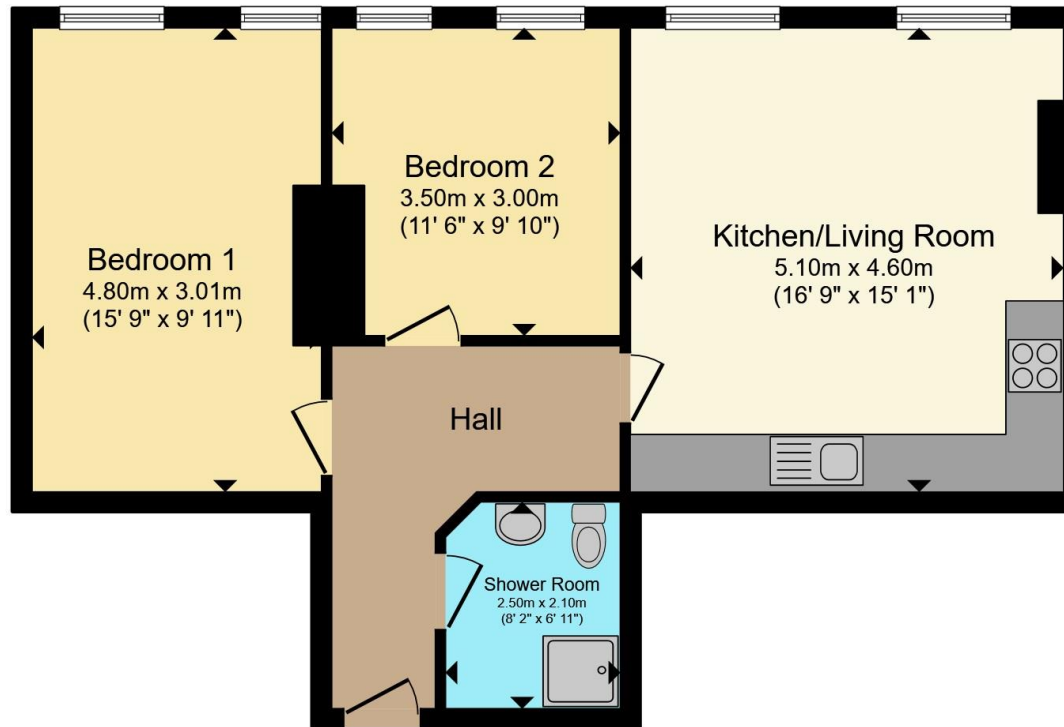












Total floor area 58.5 m<sup>2</sup> (630 sq.ft.) approx

This floor plan is for illustrative purposes only. It is not drawn to scale. Any measurements, floor areas (including any total floor area), openings and orientation are approximate. No details are guaranteed, they cannot be relied upon for any purpose and they do not form part of any agreement. No liability is taken for any error, omission or misstatement. A party must rely upon its own inspection(s). Powered by [www.propertybox.io](http://www.propertybox.io)

Connells

To view this property please contact Connells on

**T 01922 721 000**  
**E [walsall@connells.co.uk](mailto:walsall@connells.co.uk)**

57-59 Bridge Street  
WALSALL WS1 1JQ

EPC Rating: D

Council Tax  
Band: B

Service Charge: Ask  
Agent

Ground Rent:  
Ask Agent

Tenure: Leasehold

**view this property online [connells.co.uk/Property/WSL318449](http://connells.co.uk/Property/WSL318449)**

This is a Leasehold property. We are awaiting further details about the Term of the lease. For further information please contact the branch. Please note additional fees could be incurred for items such as Leasehold packs.



1. MONEY LAUNDERING REGULATIONS Intending purchasers will be asked to produce identification documentation at a later stage and we would ask for your co-operation in order that there will be no delay in agreeing the sale. 2. These particulars do not constitute part or all of an offer or contract. 3. The measurements indicated are supplied for guidance only and as such must be considered incorrect. Potential buyers are advised to recheck measurements before committing to any expense. 4. We have not tested any apparatus, equipment, fixtures, fittings or services and it is in the buyers interest to check the working condition of any appliances.

Connells Residential is registered in England and Wales under company number 1489613, Registered Office is Cumbria House, 16-20 Hockliffe Street, Leighton Buzzard, Bedfordshire, LU7 1GN. VAT Registration Number is 500 2481 05.

**See all our properties at [www.connells.co.uk](http://www.connells.co.uk) | [www.rightmove.co.uk](http://www.rightmove.co.uk) | [www.zoopla.co.uk](http://www.zoopla.co.uk)**

Property Ref: WSL318449 - 0002