



BETH ASH

exp[®] UK

@ beth.ash@exp.uk.com

🌐 bethash.exp.uk.com

📞 07456 958 026

Forstal Cottages, Lenham Heath, Maidstone

Fixed Price £350,000

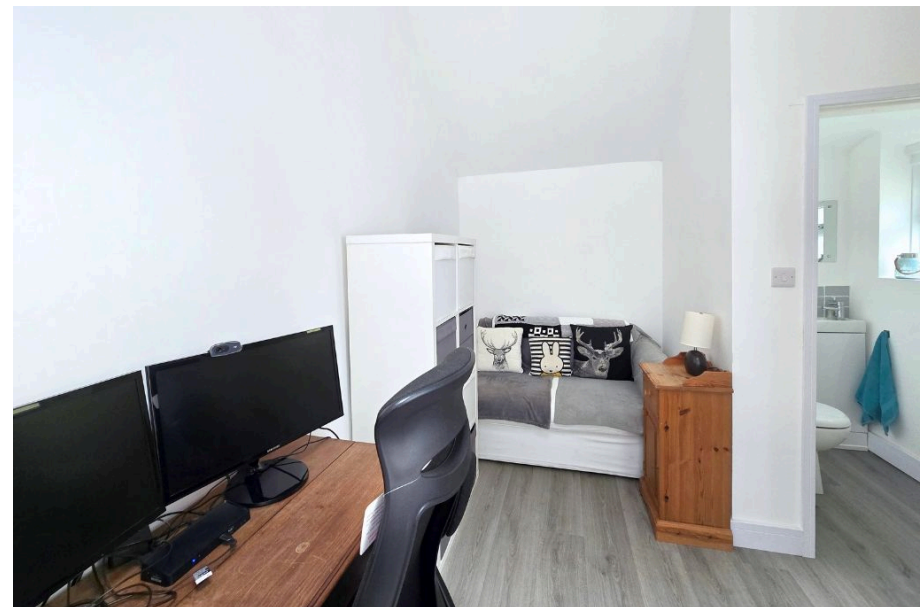
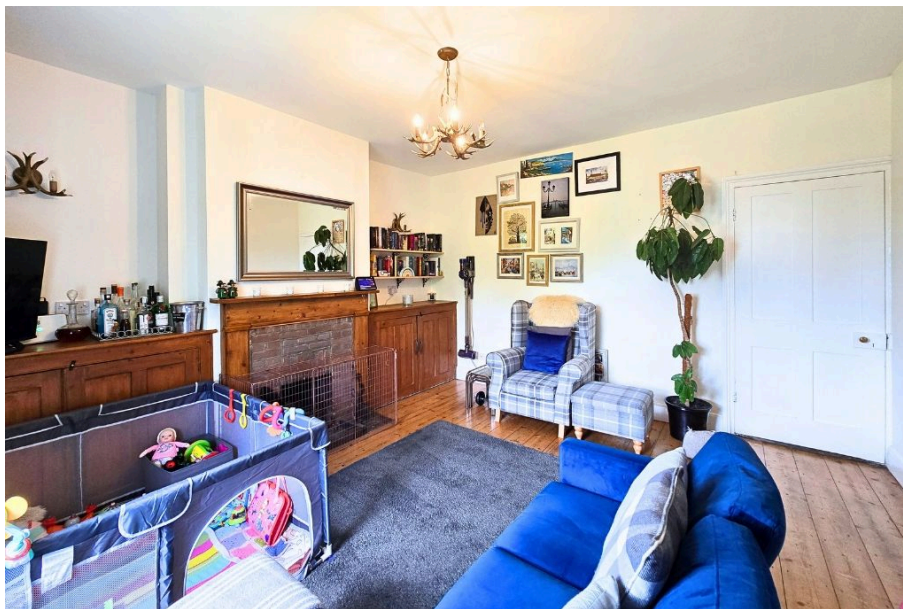
🛏 2 🚿 2 🛋 3

- Gorgeous Victorian Cottage Situated In A Rural Location
- Filled With Character And Charm Throughout
- Generous Rear Garden With Greenhouse
- Local Parking Opportunities Plus Multiple Ways To Create Parking
- External Office Space With W/C Or Potential For Annexe
- Idyllic Rural Village Location
- Modern Upstairs Shower Room With Walk-In Shower
- Plenty Of Storage
- Spacious Rooms
- Please quote BA1139 when calling.



This delightful period cottage boasts an abundance of Victorian features - from the original wooden floorboards, original internal doors, feature fireplaces and sash windows throughout almost every room. On entry, it is clear that this home has been lovingly looked after by the homeowners. Via the front door is the generous lounge with a working fireplace and fitted cupboards either side. Through here is the kitchen/diner with a country-style kitchen with feature original exposed brick wall and benefitting from feature fireplace, oak worktops, butler sink, integrated dishwasher, induction hob and extractor. There is an excellent use of space here with the worktops running underneath the stairs allowing for additional worktop and storage space. There is a rear stable door further adding to the character and charm. Leading upstairs are two double bedrooms of equal size. The rear room is being used as the second bedroom and has access to the airing cupboard and overlooks views across the outbuilding and over to the garden.





eXp World UK Ltd is a registered company at Corporation Service Company (UK) Limited, 5 Churchill Place, 10th Floor, London, United Kingdom, E14 5HU. Registered company number is 12016573. VAT Registration Number is 327 4120 29