



Living
made
better

Warehouse Court, No 1 Street
Woolwich, SE18 6FB



Asking Price £435,000

Warehouse Court, No 1 Street, Woolwich, SE18 6FB

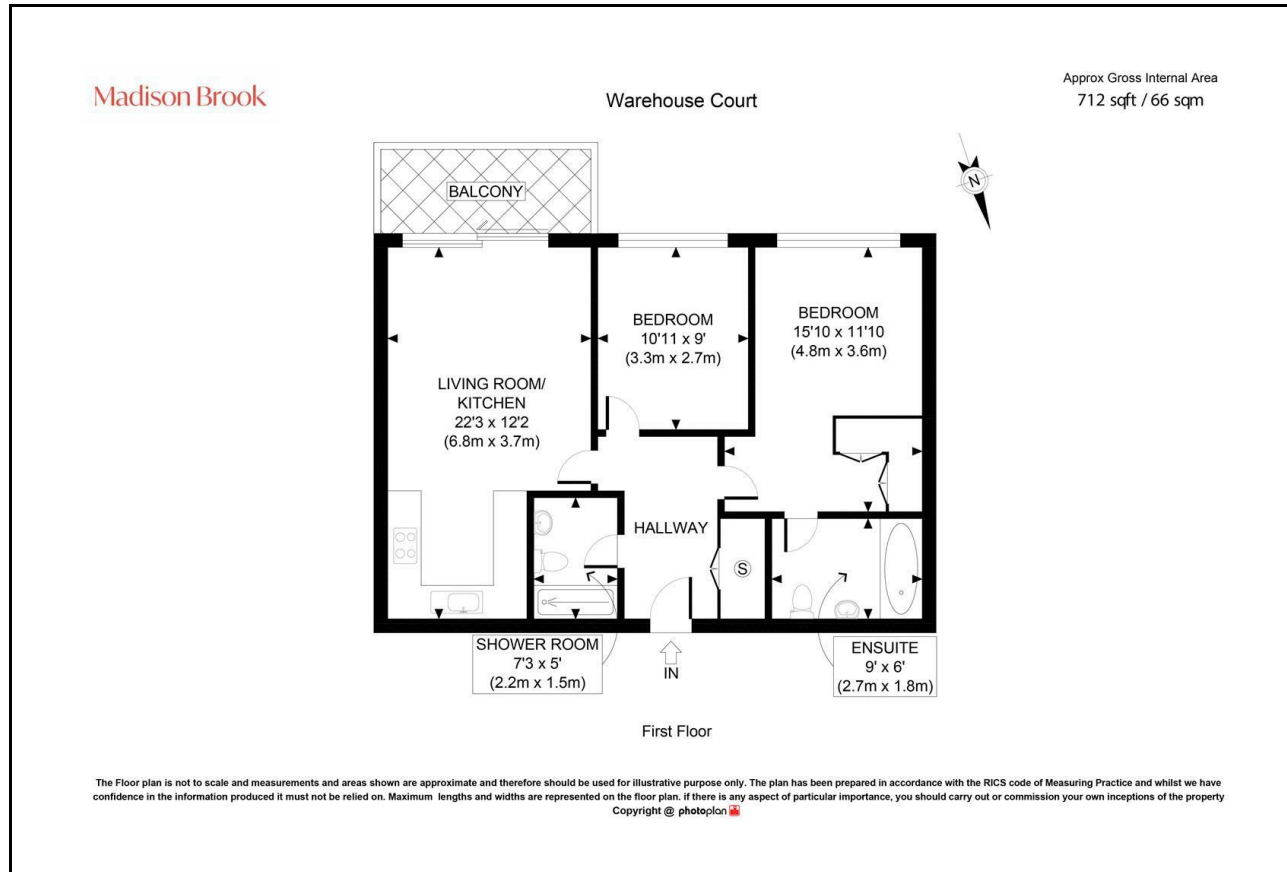
Madison Brook

Property Summary

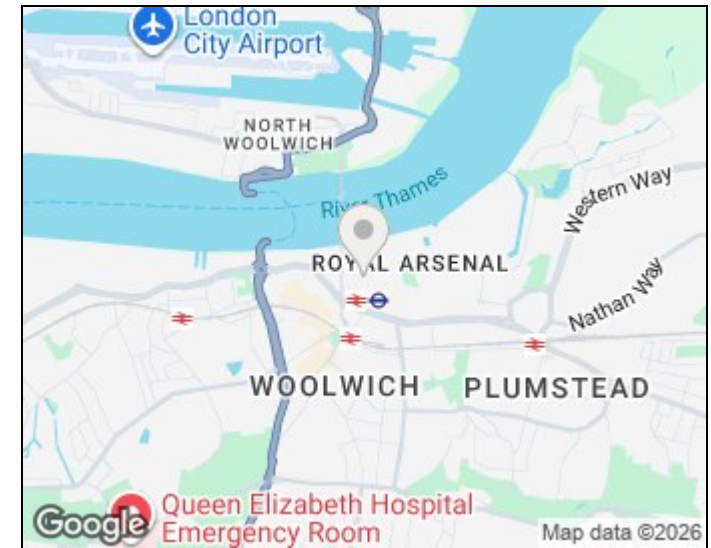
A recently refurbished two bedroom, two bathroom apartment in the popular Warehouse Court, offering 712 sq.ft. of modern living space with a private balcony overlooking the courtyard. The property features an open-plan kitchen/reception, en-suite to the principal bedroom and walk-in wardrobe, and is offered chain free with concierge service, ideally located just 0.2 miles from the Tube. Parking available by separate negotiation.

Service Charge: £2,067.66 pa | Ground Rent: £452.68 pa | Lease Remaining: 982 years

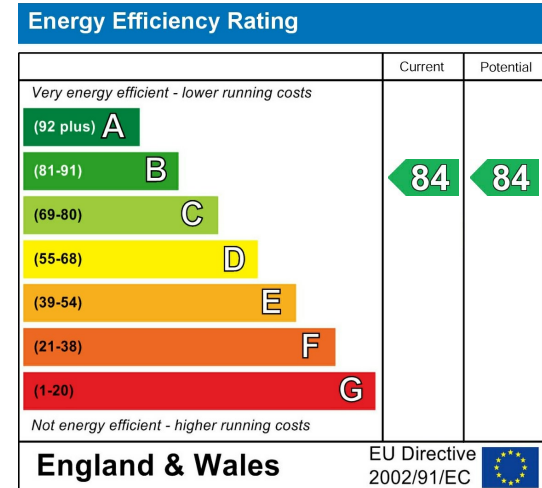
Floorplan



Area Map



Energy Efficiency Graph



These particulars, whilst believed to be accurate are set out as a general outline only for guidance and do not constitute any part of an offer or contract. Intending purchasers should not rely on them as statements of representation of fact, but must satisfy themselves by inspection or otherwise as to their accuracy. No person in this firm's employment has the authority to make or give any representation or warranty in respect of the property.

43 Loampit Vale, Lewisham, London, SE13 7FT

Tel: 020 3946 6200 Email:

lewisham@madisonbrook.com

<https://madisonbrook.com/>