



LAMPTON ROAD, TW3

£1,400 pcm

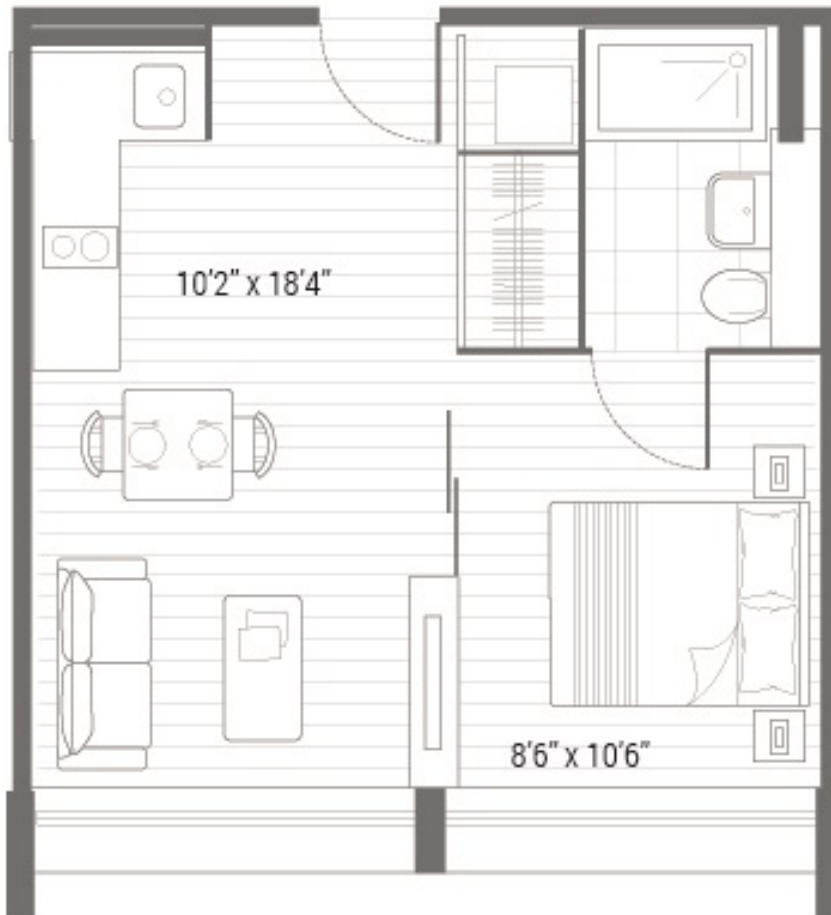
This Studio apartment is fantastically situated only a short distance from Hounslow Central station on the Piccadilly Line, being only 2 stops from Heathrow airport, and a few moments from the amenities of central London, in particular Piccadilly Circus station. With quick access to the M4 & M25 too, your daily commute into and out of London could not be more straight



ABOUT THE HOME







Total area 348 SQ.FT. 32.3 SQ.M.

LiFE RESIDENTIAL

203 Trentham Court, Victoria
Road, London, W3 6BT
Sales: 020 3668 1112
Lettings: 020 3668 1111

Energy Rating: C. We aim to make our particulars both accurate and reliable. However they are not guaranteed; nor do they form part of an offer or contract. If you require clarification on any points then please contact us, especially if you're traveling some distance to view. Please note that appliances and heating systems have not been tested and therefore no warranties can be given as to their good working order.