



Westferry Circus, E14

£4,500 Per week

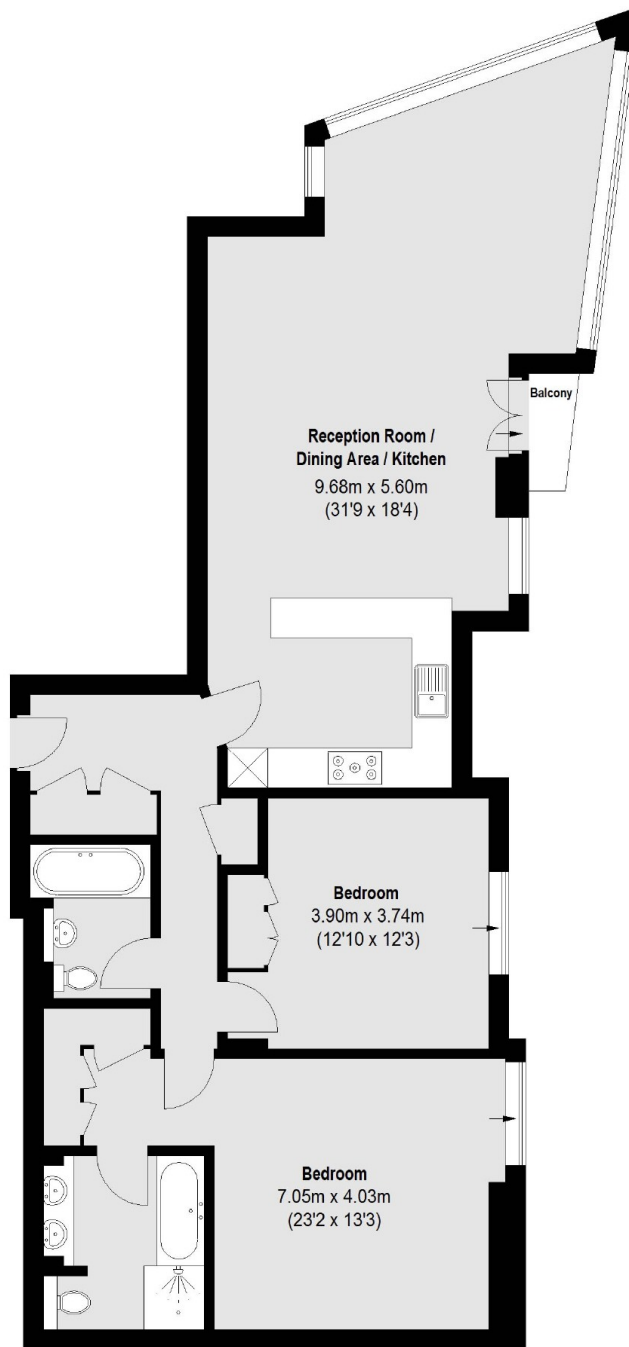
An 11th floor two bedroom two bathroom corner apartment in the popular Canary Riverside. With an open plan reception, floor to ceiling windows, built in storage and direct views of both Canary Wharf and the River Thames.

Berkeley Tower is a riverside development moments from the bars and restaurants of Westferry Circus, including Gaucho's Argentinian Steak House.

Features

- Two Bedrooms
- Two Bathrooms
- 11th Floor
- Open Plan Reception
- Concierge
- River Views

Westferry Circus, London, E14



Total area (approx.): 104.61 sq. m (1126 Sq. ft)
Balcony: 1.14 sq. m (12 Sq. ft)