



Connells

Beacon Reach Grand View Road
Hope Cove Kingsbridge



Property Description

Set within the charming development of Beacon Reach, Harmur is a delightful coastal apartment enjoying an enviable position on Grand View Road—a quiet residential lane leading directly to the South West Coast Path and the beaches below.

Originally constructed in the early twentieth century and thoughtfully converted, the property blends character with modern comfort. Arranged over two floors and accessed via a private rear entrance, the accommodation is both light-filled and versatile.

At the heart of the home is a spacious open-plan living area with kitchen, opening onto a south-facing balcony that captures stunning countryside and sea views—perfect for relaxing or entertaining. The apartment offers two well-proportioned double bedrooms, along with a third single bedroom which could also be used as a study. There is a bathroom on each floor, and the property is well maintained throughout.

Ground Floor

Entrance Porch

Velux window to ceiling.

Entrance Hall

Storage cupboard.

Kitchen/Lounge

21' 9" max x 11' max (6.63m max x 3.35m max)

Bright, open plan space with large double glazed sliding doors leading to a balcony. Stunning countryside views. Electric heater. The kitchen comprises of a range of matching wall and base units with worktops above. Peninsula island with seating space beneath. Integrated oven and countertop hob with extractor above. One and a half bowl stainless steel sink and mixer tap. Space for a washing machine and under counter fridge.

Bedroom 2

13' 6" max x 8' 5" max (4.11m max x 2.57m max)

Double glazed window. Electric heater. Storage cupboard.

Bedroom 3

7' 6" max x 6' 2" max (2.29m max x 1.88m max)

Double glazed window. Electric heater.

Shower Room

Walk in enclosure with electric shower, low level w.c. and a pedestal sink. Extractor fan.

First Floor

Landing

Velux window.

Bedroom 1

10' 3" max x 10' 1" max (3.12m max x 3.07m max)

Velux windows. Access to eaves storage. Electric heater.

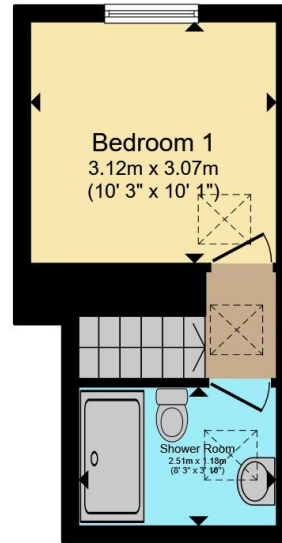
Shower Room

Walk in enclosure with electric shower, low level w.c. and a vanity sink unit. Heated towel rail. Velux window. Extractor fan.





Ground Floor



First Floor

Total floor area 73.5 m² (791 sq.ft.) approx

This floor plan is for illustrative purposes only. It is not drawn to scale. Any measurements, floor areas (including any total floor area), openings and orientation are approximate. No details are guaranteed, they cannot be relied upon for any purpose and they do not form part of any agreement. No liability is taken for any error, omission or misstatement. A party must rely upon its own inspection(s). Powered by www.propertybox.io



To view this property please contact Connells on

T 01752 345 135
E plympton@connells.co.uk

110 Ridgeway Plympton
 PLYMOUTH PL7 2HN

EPC Rating: E Council Tax Band: Deleted Service Charge: 91.00 Ground Rent: Ask Agent

Tenure: Leasehold

view this property online connells.co.uk/Property/IVY307126

This is a Leasehold property with details as follows; Term of Lease 999 years from 01 Jan 1991. Should you require further information please contact the branch. Please Note additional fees could be incurred for items such as Leasehold packs.



1. MONEY LAUNDERING REGULATIONS Intending purchasers will be asked to produce identification documentation at a later stage and we would ask for your co-operation in order that there will be no delay in agreeing the sale. 2. These particulars do not constitute part or all of an offer or contract. 3. The measurements indicated are supplied for guidance only and as such must be considered incorrect. Potential buyers are advised to recheck measurements before committing to any expense. 4. We have not tested any apparatus, equipment, fixtures, fittings or services and it is in the buyers interest to check the working condition of any appliances.

Connells Residential is registered in England and Wales under company number 1489613, Registered Office is Cumbria House, 16-20 Hockliffe Street, Leighton Buzzard, Bedfordshire, LU7 1GN. VAT Registration Number is 500 2481 05.

See all our properties at www.connells.co.uk | www.rightmove.co.uk | www.zoopla.co.uk

Property Ref: IVY307126 - 0002