

**OVER 60?**

Secure this property  
for up to **59% less!**



**Price**

**£635,000**

**Freehold**

4x  2x  3x 

Billingshurst Road, Ashington, West

Sussex, RH20

**cubitt & west**  
Helping you move forwards

## Accommodation

### GROUND FLOOR

Entrance Hall

Study: 9'8 x 7'7 (2.95m x 2.31m)

Utility Room: 6'1 x 5'5 (1.86m x 1.65m)

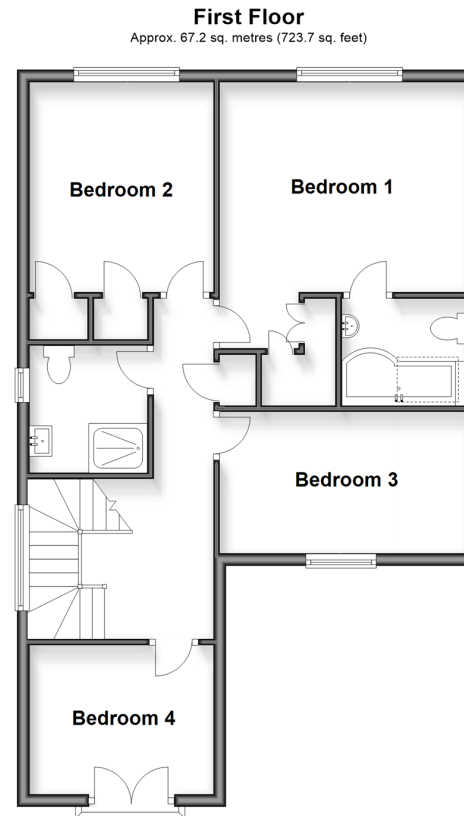
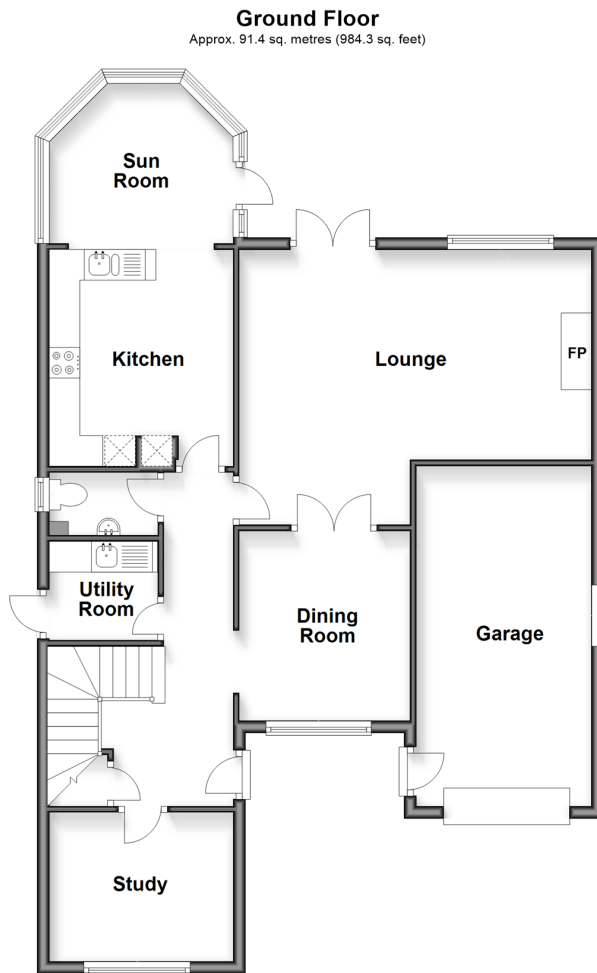
Cloakroom

Dining Room: 10'4 x 10'4 (3.15m x 3.15m)

Lounge : 18'8 x 14'8 (5.69m x 4.47m)

Kitchen: 11'4 x 9'9 (3.46m x 2.97m)

Sun Room: 9'8 x 8'6 (2.95m x 2.59m)



### FIRST FLOOR

Landing

Family Shower Room

Bedroom 1: 13'10 into fitted wardrobes x 11'5 (4.22m x 3.48m)

En Suite Bathroom

Bedroom 2: 11'4 up to fitted wardrobes x 9'9 (3.46m x 2.97m)

Bedroom 3: 13'1 x 7'4 (3.99m x 2.24m)

Bedroom 4: 9'9 x 7'7 (2.97m x 2.31m)

### OUTSIDE

Garage: 18'9 x 10'0 (5.72m x 3.05m)

Driveway

Front Garden

Rear Garden



## Main features

- Attractive detached non estate property on the edge of the village with far reaching views
- Large rear garden backing onto farmland
- Garage plus driveway for several vehicles
- Spacious accommodation including lounge with log burner
- Easy access to A24 and walking distance to the village



### Nearest Schools

Primary Schools: Ashington C of E School 0.6 miles.

Secondary Schools: Steyning Grammar Lower School, Rock Road site 3.1 miles, Upper School, Shooting Field site 5.2 miles.



### Transport Information

Train Stations: Billingshurst 9.7 miles, Horsham 15.2 miles.



### Address

Billingshurst Road, Ashington, West Sussex, RH20



### Directions

For directions to this property please contact us.



**cubitt&west**  
Helping you move forwards

Call Ashington Branch 01903 891444 ■ [cubittandwest.co.uk](https://www.cubittandwest.co.uk)



- Legal advice should be taken to verify fixtures/fittings, planning, alterations and/or lease details
- Appliances & services are untested, dimensions are approximate and floor plans are not to scale
- Through a Homewise Home For Life Plan people aged 60+ can secure this property for up to 59% less, by purchasing a Lifetime Lease



23603770/20260316/LI/HM1