



53 Seathorpe Avenue, Minster On Sea
Sheerness

Guide Price £600,000 – £625,000

53 Seathorpe Avenue

Minster On Sea, Sheerness

GUIDE PRICE £600,000 – £625,000 Open House Event
Saturday 28th March by appointment. Contact
Lynne for more information 07817 27321
Council Tax band: E

Tenure: Freehold

EPC Energy Efficiency Rating: C

EPC Environmental Impact Rating: D

- 4 bedroom detached home situated in a prime location yards from beach walks
- Detached garage with attached workshop and block paved driveway for multiple cars.
- Enclosed, landscaped garden with ponds, water features and raised sun deck
- Stunning weatherproof balcony with beautiful views from master bedroom
- Extensive eaves storage space plus walk in storage cupboards
- L shaped lounge with double aspect windows and wood burner
- Spacious kitchen/diner with range
- Downstairs shower room and first floor bathroom
- Electric gate to driveway, CCTV and outside lighting
- Sunny conservatory with doors to the garden







Seathorpe Avenue, Minster On Sea, Sheerness, ME12



Approximate Area = 1921 sq ft / 178.4 sq m

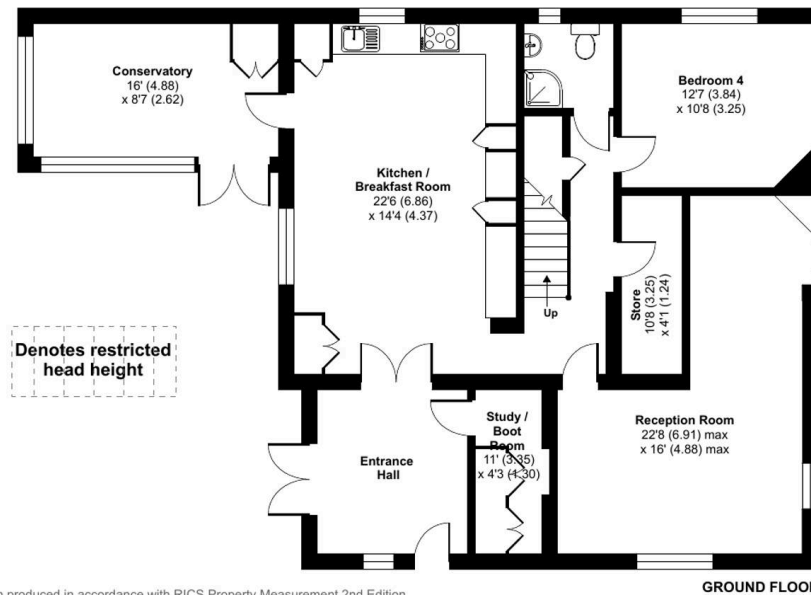
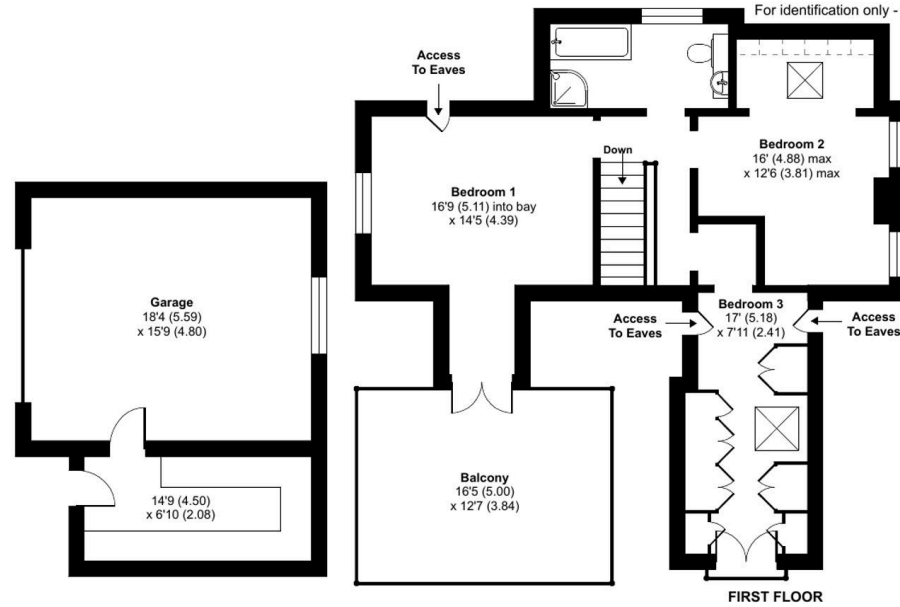
Limited Use Area(s) = 9 sq ft / 0.8 sq m

Garage = 290 sq ft / 26.9 sq m

Outbuilding = 101 sq ft / 9.3 sq m

Total = 2321 sq ft / 215.6 sq m

For identification only - Not to scale





Homely Bespoke Estate Agents

10 Orchard Way, Eastchurch - ME12 4DS

07817 727321

lynne@homelyproperties.co.uk

www.homelyproperties.co.uk