



Market Rise

Cherry Hinton Road | | Cambridge | CB1 7DZ

£1,920 PCM

COOKE
CURTIS
& CO

Key features

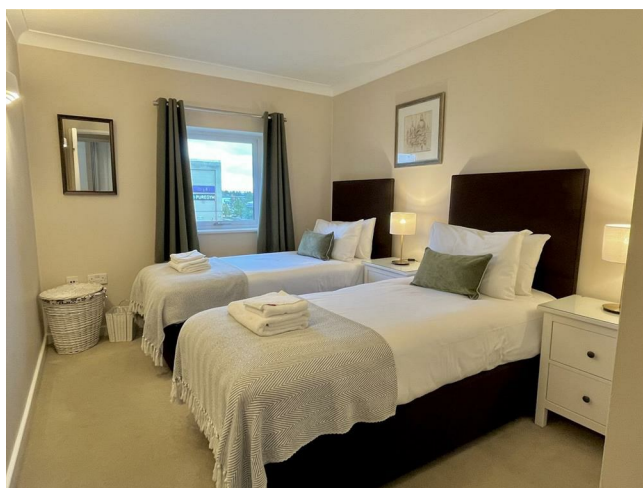
- 54 sqm / 589 sqft
- 2 bed, 1 recep, 1 bath
- EPC - C / 79
- Council tax band - C
- Gas central heating
- Allocated parking
- Min 4 month tenancy
- Available May 2026

Description

A two-bedroom, one-bathroom, newly re-decorated fully furnished apartment located at Cambridge Leisure Park with allocated parking. Providing excellent access to Addenbrookes and Cambridge City Centre.

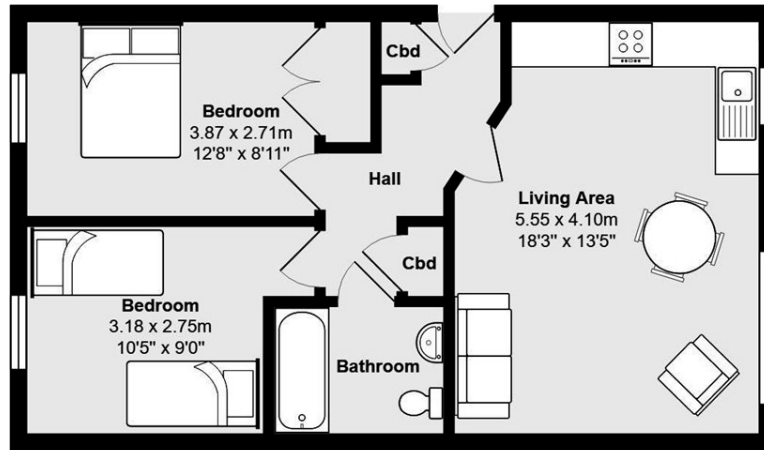
Directions

Market Rise is a building located at the top of Cherry Hinton Road in the southern edge of the city centre. Convenient for commuters as it sits only 0.5 miles from Cambridge Train Station with regular trains to London taking under an hour to reach the capital. Addenbrooke's Hospital and the Biomedical Campus is 1 mile away and there is access out to junction 11 of the M11 approx. 3 miles away. There is an excellent range of facilities in the locality, including banks, lunch time eateries, a post office and small supermarkets along with the cinema and leisure complex adjacent to the building. There are also





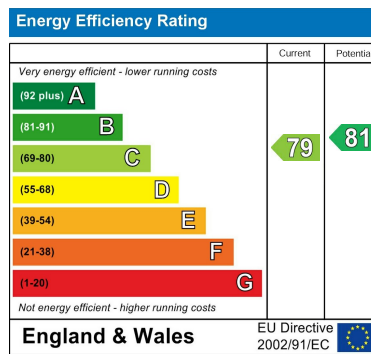
Market Rise



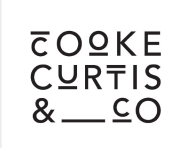
Total Area: 54.7 m² ... 589 ft²

All measurements are approximate and for display purposes only

Plan prepared by: charlesjharrison.co.uk



Council Tax Band EPC Rating C



40 High Street
 Trumpington
 Cambridge
 Cambridgeshire
 CB2 9LS
 01223 508050

hello@cookecurtis.co.uk
 cookecurtis.co.uk