



Connells

Padside Close
Hamilton Leicester

Padside Close Hamilton Leicester LE5 1PE

for sale guide price
£150,000



Property Description

****Beautiful Family Home in the Heart of Hamilton****

Tucked away on a peaceful cul-de-sac in one of Hamilton's most sought-after residential pockets, the property offers a superb blend of comfort, space and modern living. This well-presented home is ideal for families, first-time buyers or anyone looking for a move-in-ready property close to excellent amenities.

Hamilton remains one of Leicester's most desirable areas, known for its community feel and excellent local amenities. From supermarkets and cafés to parks, schools and easy access to the A46 and city centre, everything you need is close by.

The property opens into a warm and inviting hallway, door leads to the shower room and bedroom which is well sized. The modern kitchen sits at the rear, offering ample worktop space, integrated appliances and room for a dining table — a great spot for family meals.

Hallway

The property opens into a bright and welcoming hallway that sets the tone for the rest of the home. With clean lines and a practical layout, the hallway offers easy access to the bedroom and shower room. Its neutral décor creates an inviting first

impression, making the entrance feel both spacious and homely.

Bedroom

Having carpet flooring, double glazed window and radiator

Shower Room

Featuring a walk in shower with a glass enclosure, contemporary tiling, wash basin and low level WC

First Floor Landing

Open Plan Kitchen/Living Room

Offering a bright, versatile space ideal for modern family living. The kitchen area features contemporary units, generous worktop space and room for dining. The living area flows seamlessly from the kitchen, providing a comfortable space for relaxing or entertaining, enhanced by natural light from the rear aspect. The open layout gives the room a spacious, sociable feel, perfect for both quiet evenings and hosting guests.

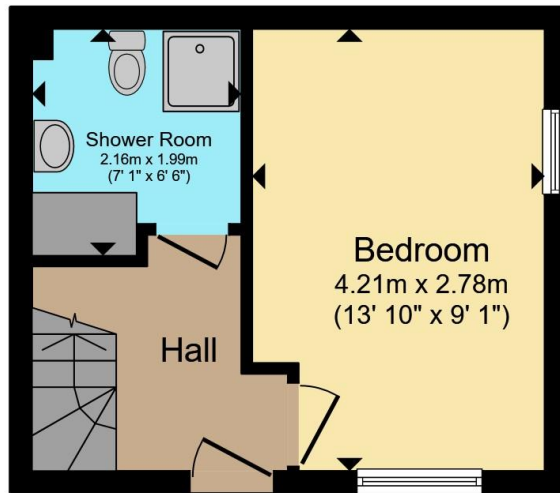
Balcony

The balcony provides a peaceful outdoor spot to unwind. Elevated views add a sense of openness, while the setting feels private and relaxing

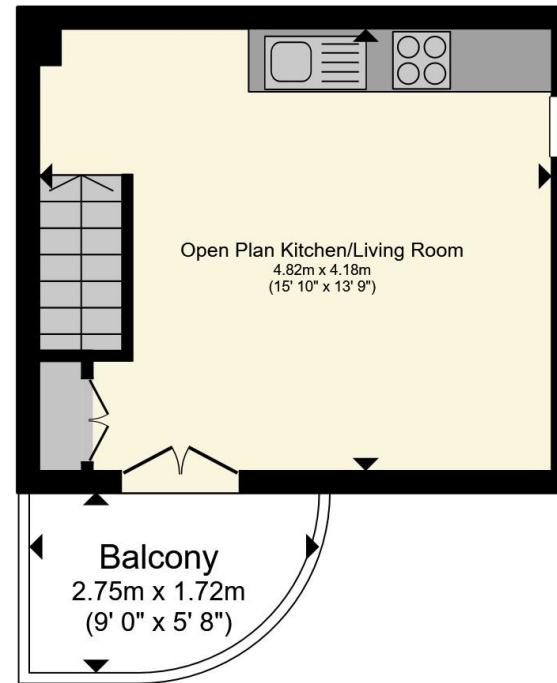








Ground Floor



First Floor

Total floor area 41.0 m² (441 sq.ft.) approx

This floor plan is for illustrative purposes only. It is not drawn to scale. Any measurements, floor areas (including any total floor area), openings and orientation are approximate. No details are guaranteed, they cannot be relied upon for any purpose and they do not form part of any agreement. No liability is taken for any error, omission or misstatement. A party must rely upon its own inspection(s). Powered by www.propertybox.io

Connells

To view this property please contact Connells on

T 0116 262 0022
E leicester@connells.co.uk

22-24 Halford Street
LEICESTER LE1 1JB

EPC Rating: C Council Tax
Band: A

Tenure: Freehold

view this property online connells.co.uk/Property/LTR325623



1. MONEY LAUNDERING REGULATIONS Intending purchasers will be asked to produce identification documentation at a later stage and we would ask for your co-operation in order that there will be no delay in agreeing the sale. 2. These particulars do not constitute part or all of an offer or contract. 3. The measurements indicated are supplied for guidance only and as such must be considered incorrect. Potential buyers are advised to recheck measurements before committing to any expense. 4. We have not tested any apparatus, equipment, fixtures, fittings or services and it is in the buyers interest to check the working condition of any appliances.

Connells Residential is registered in England and Wales under company number 1489613, Registered Office is Cumbria House, 16-20 Hockliffe Street, Leighton Buzzard, Bedfordshire, LU7 1GN. VAT Registration Number is 500 2481 05.

See all our properties at www.connells.co.uk | www.rightmove.co.uk | www.zoopla.co.uk

Property Ref: LTR325623 - 0003