

20 Manor House Court
, Chesterfield, S41 7GX

£850 PCM



20 Manor House Court

, Chesterfield, S41 7GX

A two bedroom town house located on a popular development just outside of Chesterfield town centre and close to local amenities. This property benefits from off road parking, a private rear garden and an easily maintained front lawn.

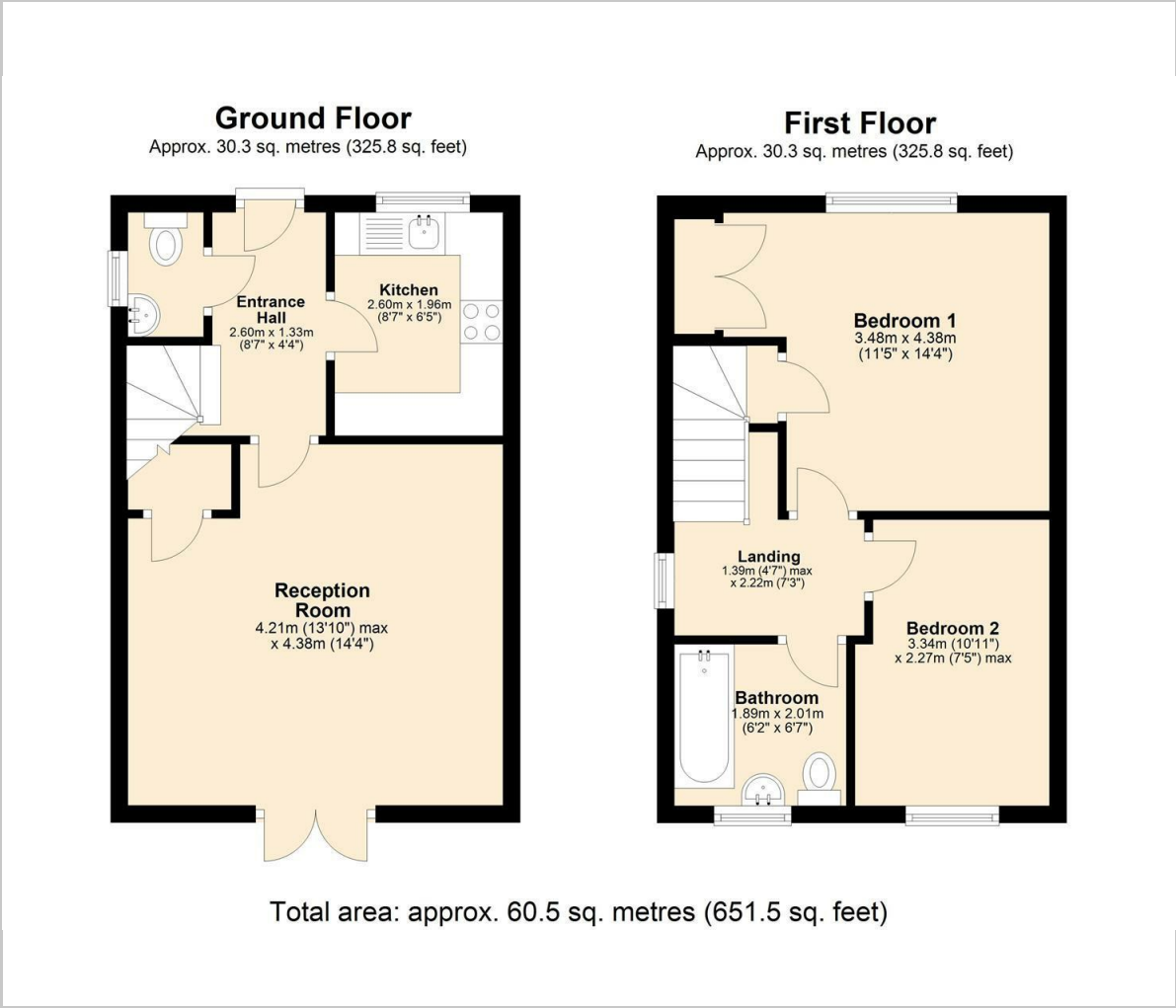
The property comprises; entrance hall with downstairs WC, modern kitchen with integrated oven and fridge freezer and spacious living area with French doors leading to patio area and private rear garden. Stairs leading to two good sized bedrooms and bathroom with white suite and shower over bath.

Rental information





Floor Plan

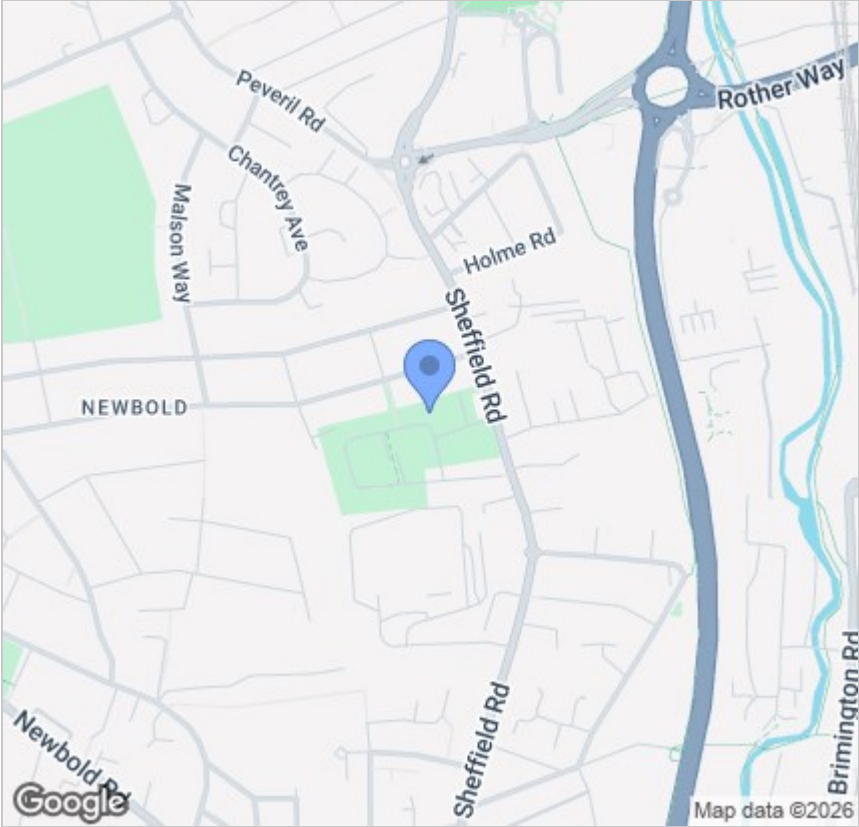


Viewing

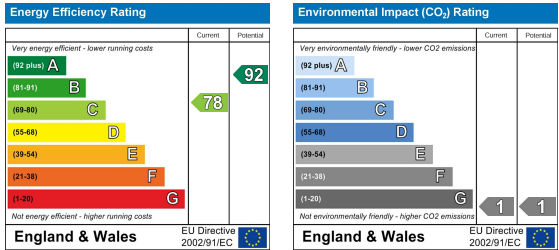
Please contact our Chesterfield Office on 01246 567540 if you wish to arrange a viewing appointment for this property or require further information.

These particulars, whilst believed to be accurate are set out as a general outline only for guidance and do not constitute any part of an offer or contract. Intending purchasers should not rely on them as statements of representation of fact, but must satisfy themselves by inspection or otherwise as to their accuracy. No person in this firms employment has the authority to make or give any representation or warranty in respect of the property.

Area Map



Energy Efficiency Graph



131 Chatsworth Road, Chesterfield, Derbyshire, S40 2AP
T: 01246 567540



E: info@dalesandpeaks.co.uk
www.dalesandpeaks.co.uk