



Murray Avenue
Kingsley, Northampton

oriordanbond
SALES & LETTINGS



Murray Avenue

Kingsley
NN2 7BS

PRICE £229,995

O’Riordan Bond is delighted to offer for sale this impressive and extended double bay fronted terraced home located at the end of a quiet cul-de-sac within Kingsley.

The accommodation comprises entrance porch, through entrance hall, bay fronted sitting room, open plan re-fitted contemporary kitchen/dining room with integrated appliances, conservatory, cloakroom/WC, utility room, two first floor double bedrooms and re-fitted modern bathroom and a staircase to a further 15’ x 12’ versatile room on the top floor. Outside are good size enclosed gardens to both the front and rear with the rear garden benefitting from a composite garden room with sheltered decked area currently housing a hot tub (not included.) Further benefits include gas radiator heating and uPVC double glazing. The property is offered for sale with no onward chain. (B1100/M)

Additional information

- Council Tax Band: B
- Energy Efficiency Rating:

Viewing

Viewing strictly by appointment – details below

Disclaimer

O’Riordan Bond Estate Agents Limited has not tested apparatus, equipment, fittings or services and so cannot verify they are in working order. The buyer is advised to obtain verification from their solicitor or surveyor.

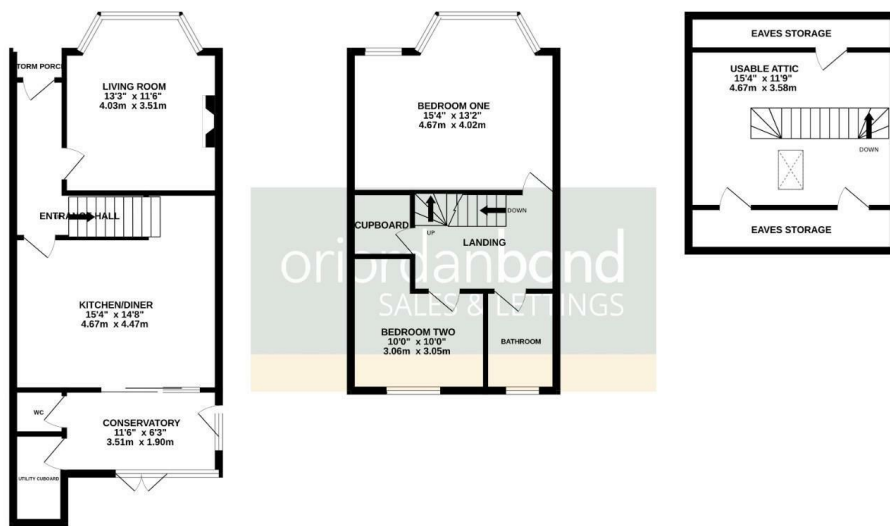
O’Riordan Bond Abington Sales
01604 639007
abington@oriordanbond.co.uk



GROUND FLOOR

1ST FLOOR

2ND FLOOR



TOTAL FLOOR AREA : 1187 sq.ft. (110.3 sq.m.) approx.

Whilst every attempt has been made to ensure the accuracy of the floorplan contained here, measurements of doors, windows, rooms and any other items are approximate and no responsibility is taken for any error, omission or mis-statement. This plan is for illustrative purposes only and should be used as such by any prospective purchaser. The services, systems and appliances shown have not been tested and no guarantee as to their operability or efficiency can be given.
Made with Metropac (2020)