



Wildern Lane, Hedge End, Southampton, SO30 4EH

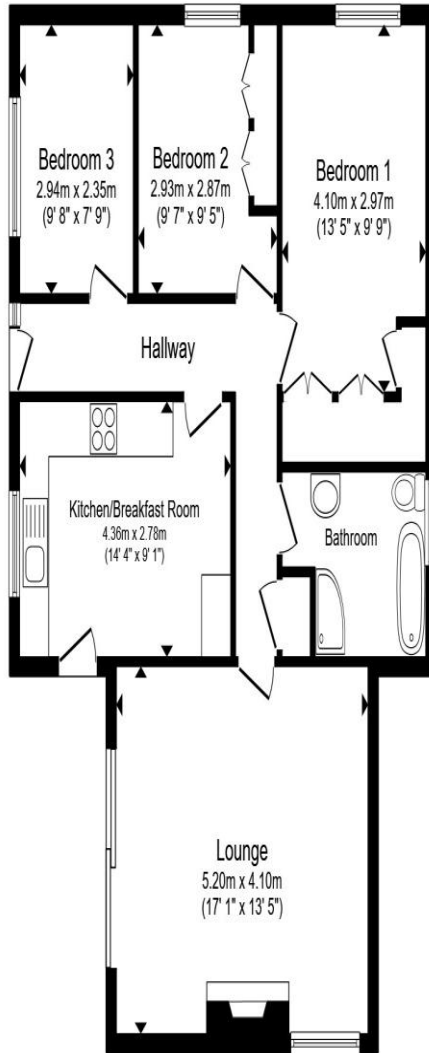


welcome to

Wildern Lane, Hedge End Southampton

Detached three bedroom bungalow situated in the sought after area of Hedge End. The property benefits from a Lounge, kitchen, family bathroom, three bedrooms, an enclosed rear garden, a driveway providing off road parking and a garage. Viewings are a must!





Total floor area 95.0 m² (1,023 sq.ft.) approx

This floor plan is for illustrative purposes only. It is not drawn to scale. Any measurements, floor areas (including any total floor area), openings and orientation are approximate. No details are guaranteed, they cannot be relied upon for any purpose and they do not form part of any agreement. No liability is taken for any error, omission or misstatement. A party must rely upon its own inspection(s). Powered by www.propertybox.io



Entrance Hall

Lounge

13' 5" x 17' 1" (4.09m x 5.21m)

Kitchen

14' 4" x 9' 2" (4.37m x 2.79m)

Bedroom One

16' 6" into wardrobe x 9' 8" max (5.03m into wardrobe x 2.95m max)

Bedroom Two

9' 7" x 9' 5" (2.92m x 2.87m)

Bedroom Three

7' 8" x 9' 8" (2.34m x 2.95m)

Bathroom

Front Garden

Rear Garden

welcome to

Wildern Lane, Hedge End Southampton

- Three Bedroom Bungalow
- Driveway and Off Road Parking
- Lounge
- Kitchen
- Enclosed Rear Garden

Tenure: Freehold EPC Rating: D

Council Tax Band: D

£425,000



Please note the marker reflects the postcode not the actual property

check out more properties at fox-and-sons.co.uk



Property Ref:
HEE106182 - 0010

1. MONEY LAUNDERING REGULATIONS Intending purchasers will be asked to produce identification documentation at a later stage and we would ask for your co-operation in order that there is no delay in agreeing the sale. 2. These particulars do not constitute part or all of an offer or contract. 3. The measurements indicated are supplied for guidance only and as such must be considered incorrect. Potential buyers are advised to recheck measurements before committing to any expense. 4. We have not tested any apparatus, equipment, fixtures or services and it is in the buyers interest to check the working condition of any appliances. 5. Where an EPC, or a Home Report (Scotland only) is held for this property, it is available for inspection at the branch by appointment. If you require a printed version of a Home Report, you will need to pay a reasonable production charge reflecting printing and other costs. 6. We are not able to offer an opinion either written or verbal on the content of these reports and this must be obtained from your legal representative. 7. Whilst we take care in preparing these reports, a buyer should ensure that his/her legal representative confirms as soon as possible all matters relating to title including the extent and boundaries of the property and other important matters before exchange of contracts.

Fox & Sons is a trading name of Sequence (UK) Limited which is registered in England and Wales under company number 4268443, Registered Office is Cumbria House, 16-20 Hockliffe Street, Leighton Buzzard, Bedfordshire, LU7 1GN. VAT Registration Number is 500 2481 05.


fox & sons



01489 785269



HedgeEnd@fox-and-sons.co.uk



Stirling House, 5 St. Johns Road, Hedge End,
SOUTHAMPTON, Hampshire, SO30 4AA



fox-and-sons.co.uk