



Muster Court, Haywards Heath

Guide Price £285,000 - £295,000

Muster Court

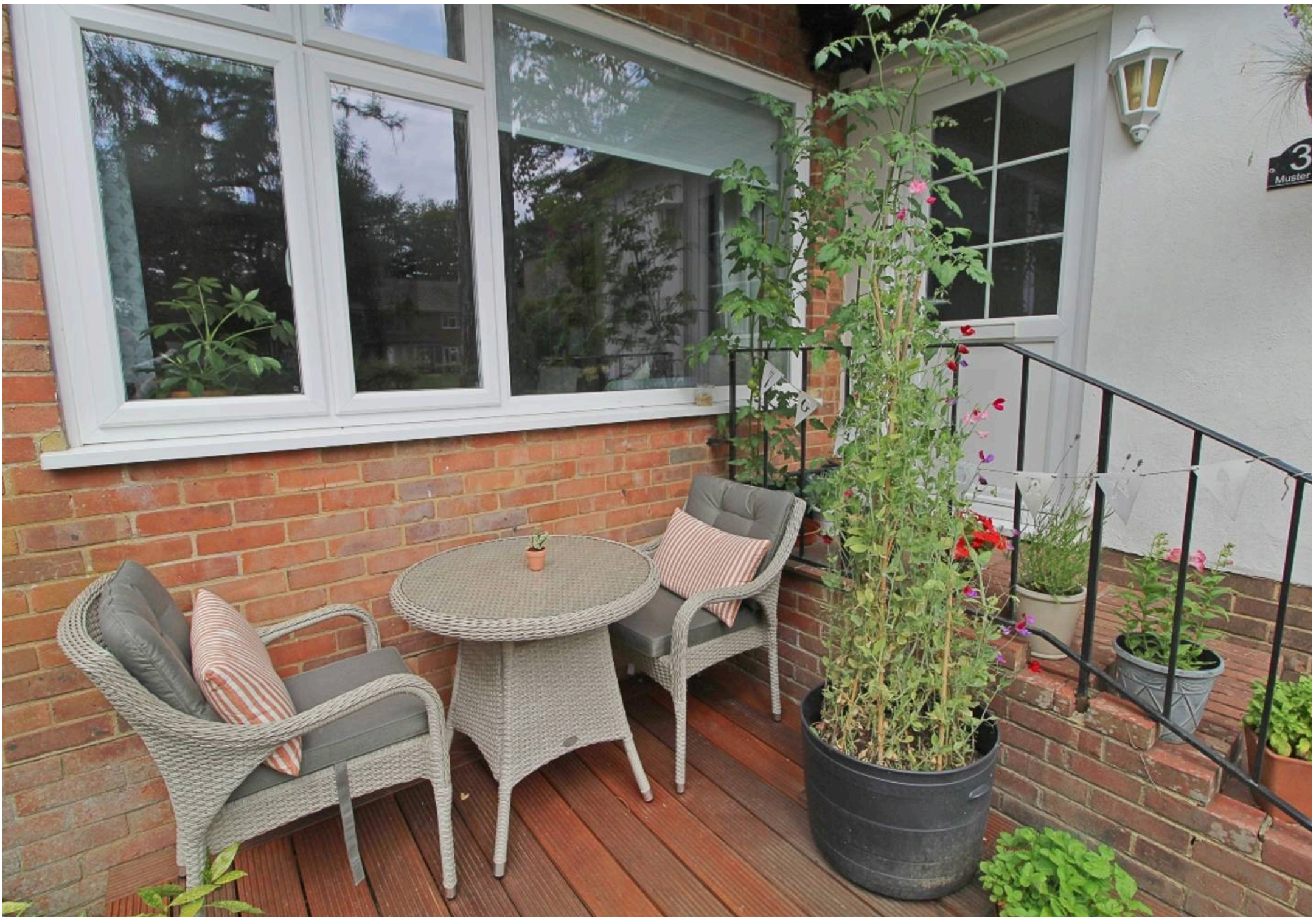
Haywards Heath

Henry Adams are delighted to present to the market this, excellent ground floor maisonette set in the heart of Haywards Heath, surrounded by idyllic communal gardens, ideal for a first time buyer, or someone looking to downsize.

Internally, there is a private entrance lobby, onto a entrance hall with ample storage space. This leads through to a double aspect living and dining room enjoying an open outlook over the communal gardens, designed to create a separate lounge and dining area, which is perfect for hosting and entertaining. There is a great sized fitted kitchen, with a range of modern appliances and white goods. In addition to this, there are two spacious double bedrooms, with the master bedroom offering built in wardrobe space. The accommodation is complete with a white suite family bathroom, with both bath and shower facilities.

Externally, there is a private decking area overlooking the beautifully maintained communal gardens. There is also ample car parking for residents to use.









Situated in this central location opposite Muster Green gardens and just a short walk to the town centre with its wide range of shops, The Broadway with its array of restaurants and the mainline railway station providing an excellent service to central London (Victoria/London Bridge 42-45 minutes). The A23 lies about 5 miles to the west providing a direct route to the motorway network, Gatwick Airport is 13.2 miles to the north, the cosmopolitan city of Brighton and the coast is 14.6 miles to the south, whilst the South Downs National Park is within an easy drive offering a beautiful natural venue for countryside walking.

Council Tax band: B

Tenure: Leasehold

EPC Energy Efficiency Rating: E

EPC Environmental Impact Rating: E

Entrance Hall

Lounge / Diner

Kitchen

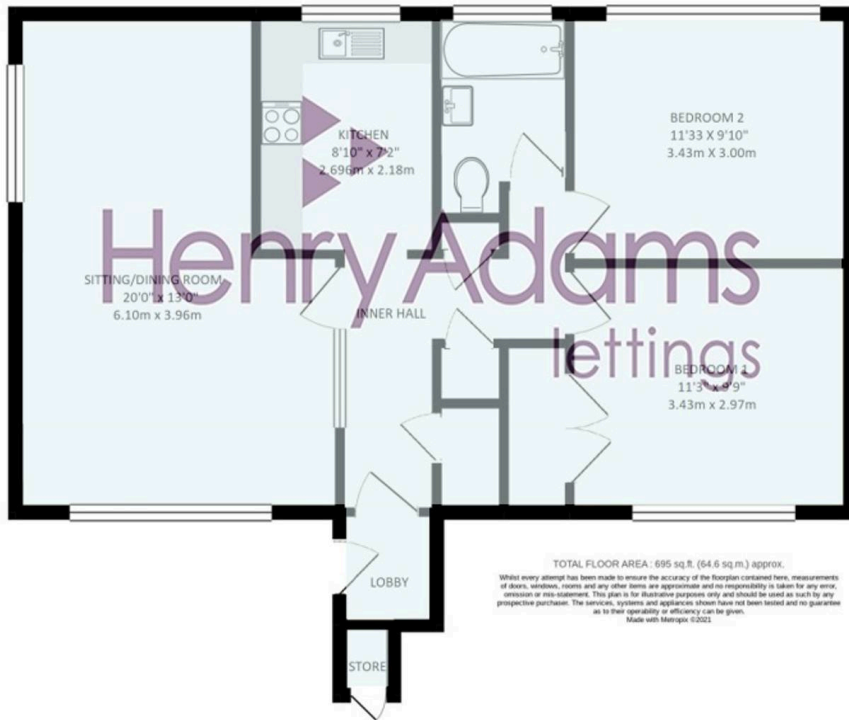
Master Bedroom

Bedroom Two

Family Bathroom



GROUND FLOOR
695 sq.ft. (64.6 sq.m.) approx.



TOTAL FLOOR AREA: 695 sq.ft. (64.6 sq.m.) approx.
Whilst every attempt has been made to ensure the accuracy of the floorplan contained here, measurements of doors, windows, rooms and any other items are approximate and no responsibility is taken for any error, omission or mis-statement. This plan is for illustrative purposes only and should be used as such by any prospective purchaser. The services, systems and appliances shown have not been tested and no guarantee as to their operability or efficiency can be given.
Made with Mergo 12021



Henry Adams – Haywards Heath

Henry Adams HRR Ltd, 1 Park Parade,, Haywards Heath – RH16 4LX

01444 458380

haywardsheath@henryadams.co.uk

www.henryadams.co.uk/

Agents Note – Our particulars are for guidance only and are intended to give a fair overall summary of the property. They do not form part of any contract or offer, and should not be relied upon as a statement or representation of fact. Measurements, areas and distances are approximate only. Photographs may include lifestyle shots and pictures of local views. No undertaking is given as to the structural condition of the property, or any necessary consents or the operating ability or efficiency of any service, system or appliance. Please ask if you would like further information, especially before you travel to the property.