



Goodchild Road, N4

£400,000

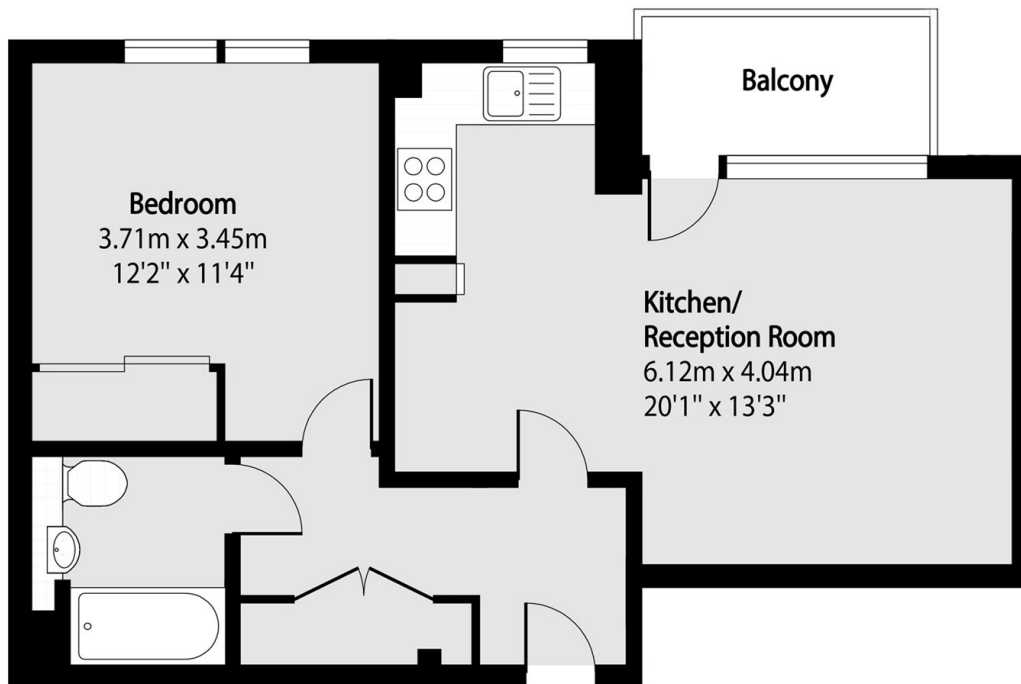
A beautifully presented one bedroom apartment situated on the fourth floor with views of the reservoir located in sought after Woodberry Down. The property features a bright open plan kitchen and living area, a spacious double bedroom, ample storage and a private balcony.

Aqua Apartments is close to excellent transport links with Manor House station (Piccadilly line) 0.2m away. The local area provides a nature reserve and parks, and a great mix of cafés, gyms and local shops.

Features

- Outstanding Water View
- Lift Access
- One Bedroom
- Private Balcony
- Secure Bike Storage
- Right to Apply for Parking

Goodchild Road, London, N4



Total area (approx): 49.05 sq m (528 sq. ft)

Balcony total area (approx): 3.99 sq m 43 sq. ft)