



Southey Road, N15

£475,000

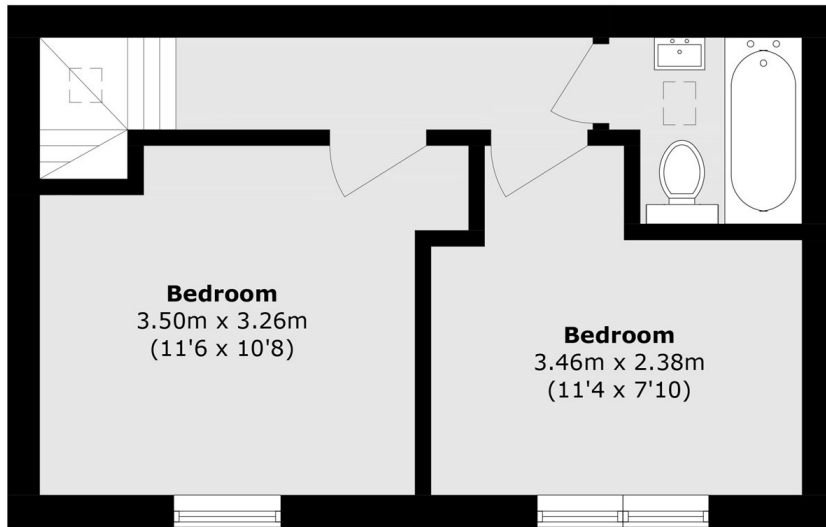
A well-presented two bedroom freehold mews house in a private gated development. The property offers a bright reception room with garden access, separate kitchen, two double bedrooms, good storage and off-street parking.

The property enjoys excellent transport links, with Seven Sisters station and National Rail services close by. Chestnuts Park is just a short walk away, and a variety of local shops, cafés and schools are all within easy reach.

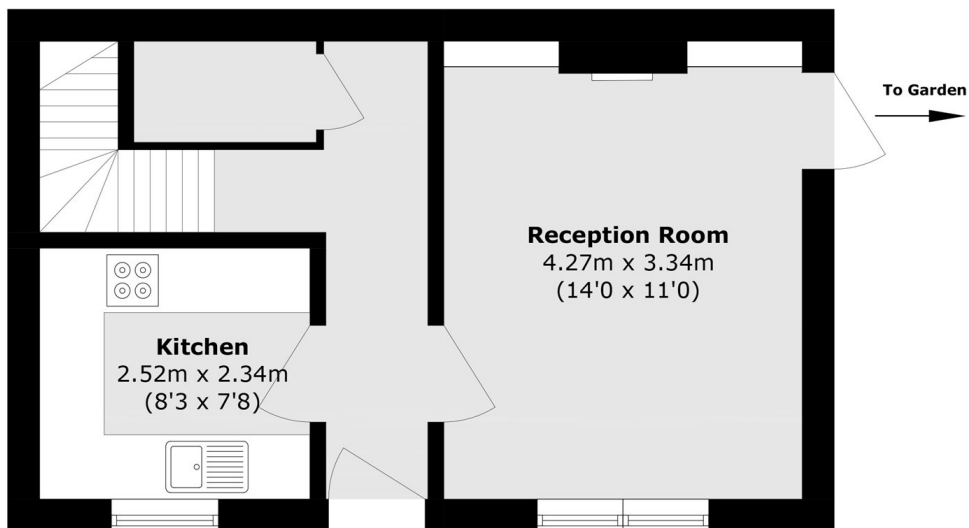
Features

- Gated Development
- Two bedrooms
- Freehold
- Private Garden
- Separate Kitchen
- Off-Street Parking

Southey Road, London, N15



First Floor



Ground Floor

Total area (approx.): 60.7 sq. m (653.4 sq. ft)