



PM ESTATES

Property Sales & Lettings



Riverside Wharf

Bishops Stortford, Hertfordshire, CM23 3GN

£1,600_{PCM}

Riverside Wharf

Bishops Stortford, Hertfordshire, CM23 3GN

Overview

- Gas and Water Included in The Rental Price
- First Floor Apartment
- Two Double Bedrooms
- Family Sized Tiled Bathroom
- Open Plan Living Area
- Fully Fitted Modern Kitchen
- Integrated Appliances
- Offered Furnished
- Town Centre Location
- Walking Distance to Rail Station
- Energy Rating C
- Council Tax Band C



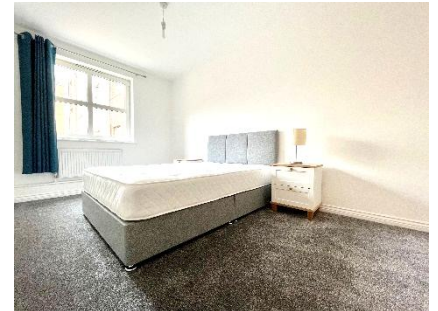
Description

Overlooking the private communal gardens and set within the heart of Bishops Stortford Town Centre, this large and well-proportioned two double bedroom apartment is now available on the rental market.

Gas and Water Included in The Rental Price.

The property is separated by a large corridor and features a large and open plan living area which contains a fully fitted black gloss style kitchen complete with integrated appliances including a full-size dishwasher. The light kitchen works in tandem with the light oak wood style floor and the large feature picture window to create a bright and airy social space.

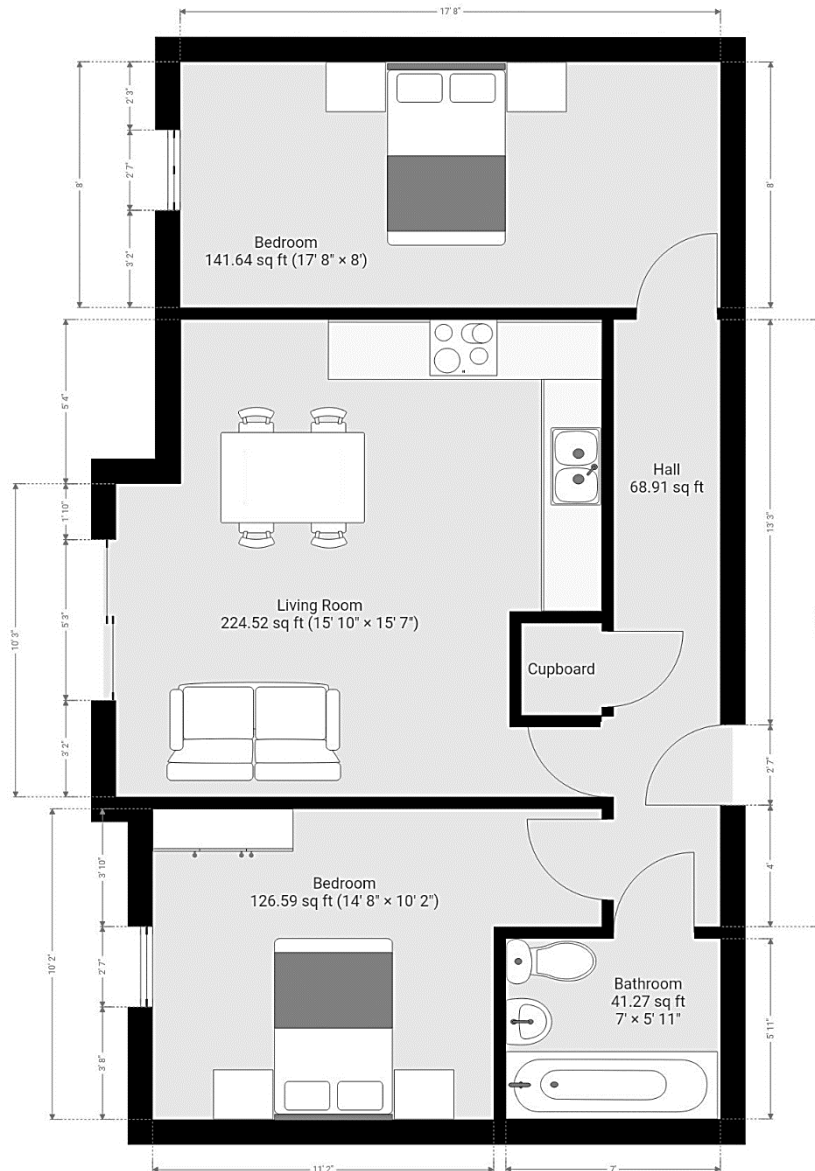
This modern apartment is offered furnished and has the advantage of being centrally located. The mainline rail station is a three-minute walk from the Riverside Wharf Development, and offers direct services to London Liverpool Street, Cambridge and Stansted Airport.



Score	Energy rating	Current	Potential
92+	A		
81-91	B		
69-80	C	80 c	80 c
55-68	D		
39-54	E		
21-38	F		
1-20	G		



Floor Plan



7 Riverside Walk, South Street, Bishop's Stortford, Herts CM23 3AG

Tel: 01279 654646

Email: info@pm-estates.co.uk

www.pm-estates.co.uk

PM Estates wish to advise prospective purchasers that we have not checked the services or appliances. The sales particulars have been prepared as a guide only; any floor-plan or map is for illustrative purposes only. PM Estates, for themselves and for the vendors or lessors of this property whose agents they are give notice that: the particulars have been produced in good faith; do not constitute any part of a contract; no person in the employment of PM Estates has any authority to make or give any representation of warranty in relation to this property.

P820

www.pm-estates.co.uk