



Fountain Drive, SE19

£260,000

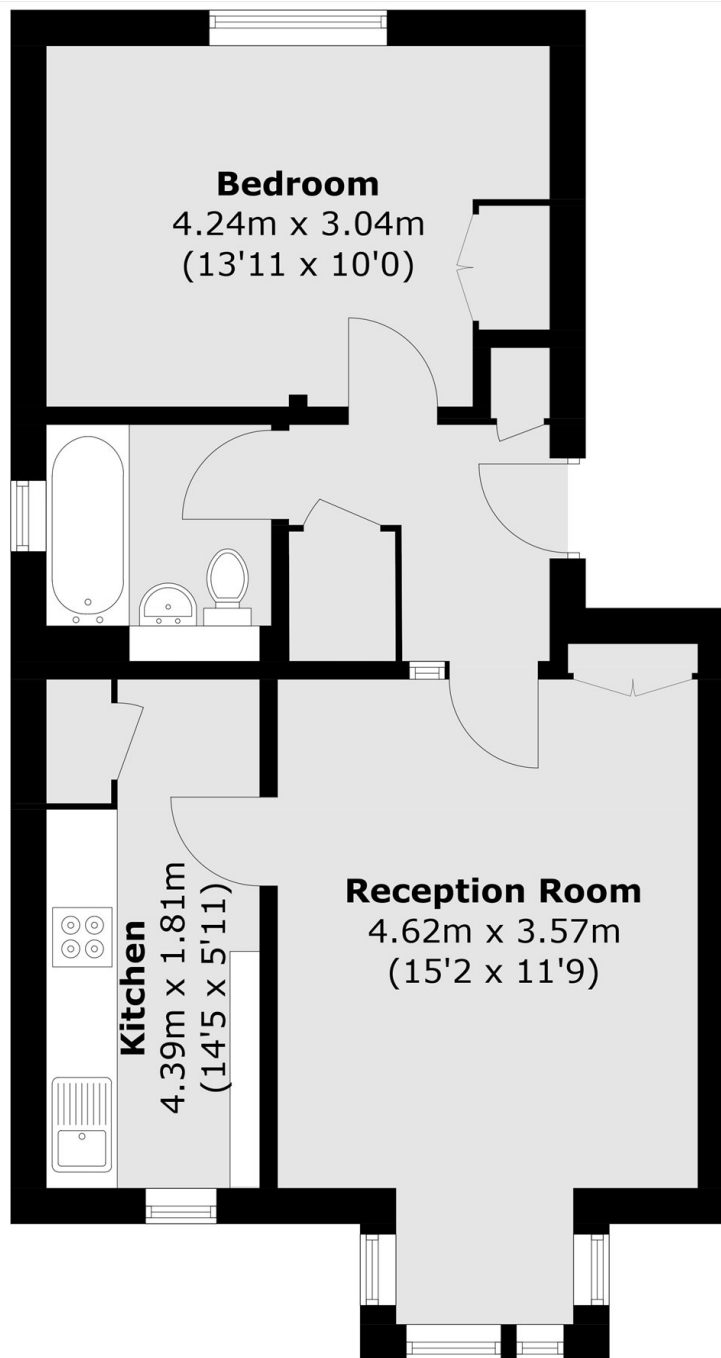
Located within a small private development this purpose built apartment is sold with no onward chain. It offers a good-size double bedroom, bright reception with plenty of space for socialising or relaxing, fitted kitchen and bathroom/WC. With the added benefit of a communal garden and residents parking, it presents the perfect step on to the property ladder.

Hogarth Court is a sought after development situated by Crystal Palace Park and perfectly placed for many of the areas amenities, including independent restaurants, local shops and bars. The nearest train station is Gypsy Hill with services to Victoria, London Bridge and Crystal Palace. Sydenham Hill station is also within reach with frequent trains to Victoria.

Features

- Naturally Bright
- Over 500 Sq Ft
- Convenient Location
- No Onward Chain
- Residents Parking
- Communal Garden

Fountain Drive, London, SE19



Total area (approx.): 48.6 sq. m (523 sq. ft)