

for sale

£325,000



## Sandpit Close Collingtree NORTHAMPTON NN4 0AX

Modern three-bedroom end of terrace home featuring stylish open-plan living in a highly sought-after location, complete with a driveway and a beautifully landscaped rear garden.

# Sandpit Close Collingtree NORTHAMPTON NN4 0AX

## Entrance Hall

Door to the front elevation and further doors leading off to the cloakroom and open plan living space.

## Cloakroom

White suite comprising low level flush w.c and wash hand basin with tiling to splash back area. Radiator.

## Lounge/ Dining/ Kitchen Area

Open plan living space, with kitchen area opening into the dining area into the lounge area. Stairs rising to the first floor landing.

## Lounge

Double glazed window to the rear elevation and double glazed French doors to the rear elevation leading out to the garden. Understairs storage cupboard.

## Kitchen Area

Double glazed window to the front elevation. Fitted with a range of wall and base level units. One and a half stainless steel sink and drainer set into work surfaces with complimentary splash back areas. Integrated appliances comprise fridge freezer, dishwasher, electric oven and four ring gas hob with cooker hood over. Double glazed window to the front elevation.

## Dining Area

Area for seating between the kitchen space and living space.

## First Floor Landing

Doors leading to three bedrooms and family bathroom. Loft access.

## Bedroom One

Double glazed window to the rear elevation. Radiator. Connecting door to en-suite.

## En-Suite

White suite comprising double shower cubicle, low level flush w.c and wash hand basin with tiling to splash back area. Radiator. Tiled flooring. Opaque double glazed window to the rear elevation.

## Bedroom Two

Double glazed window to the front elevation. Radiator.

## Bedroom Three

Double glazed window to the front elevation. Radiator.



## Family Bathroom

White suite comprising bath with mixer taps, low level flush w.c and wash hand basin with tiling to splash back areas and floor. Radiator. Tiled flooring. Opaque double glazed window to the side elevation.

## Outside

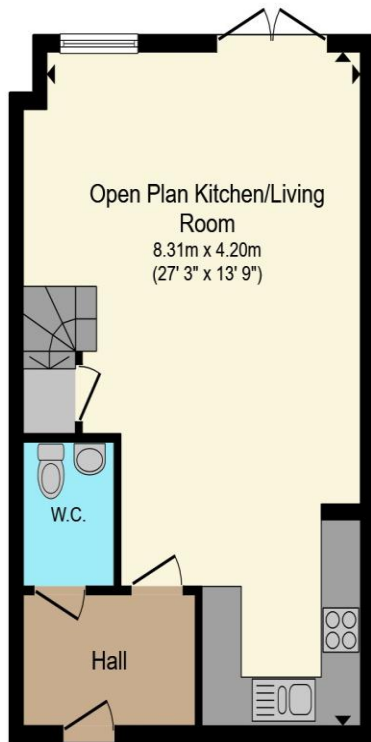
### Front Garden

Driveway providing off road parking for two vehicles side by side. Pathway leading to the front door. Gated access to the rear of the property.

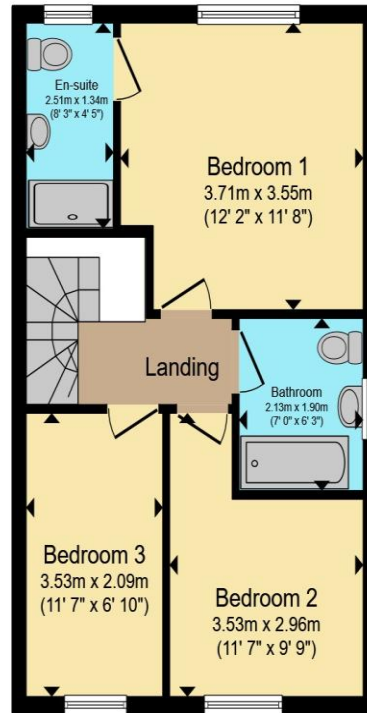
### Rear Garden

Landscaped rear garden, with paved patio area ideal for entertaining and relaxation leading upto lawned area. Retained fencing. Shed. Gated access to the front of the property.





**Ground Floor**



**First Floor**

Total floor area 85.3 m<sup>2</sup> (918 sq.ft.) approx

This floor plan is for illustrative purposes only. It is not drawn to scale. Any measurements, floor areas (including any total floor area), openings and orientation are approximate. No details are guaranteed, they cannot be relied upon for any purpose and they do not form part of any agreement. No liability is taken for any error, omission or misstatement. A party must rely upon its own inspection(s). Powered by www.propertybox.io



To view this property please contact Connells on

**T 01604 706644**  
**E woottonfields@connells.co.uk**

11 Tudor Court Wootton Hope Drive Wootton  
 NORTHAMPTON NN4 6FF

Property Ref: WFL408611 - 0006

Tenure:Freehold EPC Rating: B

Council Tax Band: C

**view this property online [connells.co.uk/Property/WFL408611](https://www.connells.co.uk/Property/WFL408611)**



1. MONEY LAUNDERING REGULATIONS Intending purchasers will be asked to produce identification documentation at a later stage and we would ask for your co-operation in order that there will be no delay in agreeing the sale. 2. These particulars do not constitute part or all of an offer or contract. 3. The measurements indicated are supplied for guidance only and as such must be considered incorrect. Potential buyers are advised to recheck measurements before committing to any expense. 4. We have not tested any apparatus, equipment, fixtures, fittings or services and it is in the buyers interest to check the working condition of any appliances.

Connells Residential is registered in England and Wales under company number 1489613, Registered Office is Cumbria House, 16-20 Hockliffe Street, Leighton Buzzard, Bedfordshire, LU7 1GN. VAT Registration Number is 500 2481 05.

see all our properties at [www.connells.co.uk](https://www.connells.co.uk) | [www.rightmove.co.uk](https://www.rightmove.co.uk) | [www.zoopla.co.uk](https://www.zoopla.co.uk)