



Eccles New Road, Salford

£1,150 PCM

This beautifully presented ground-floor apartment is located in the ever-popular St James' Park development, Salford, just a ten-minute walk to Langworthy Tram Station. With an abundance of local amenities on your doorstep, great transport links and easy access to the motorway network, this really is an ideal spot!

Sit amongst beautiful communal gardens with barbecue and seating area, and accessed via secure gated entrance, this really is one you won't want to miss! Benefiting from allocated parking and situated within easy reach of Manchester City Centre and MediaCityUK, this spacious apartment would make a great home, and is available to rent right now!

Inside the apartment you will find two good size double bedrooms, the bigger of the two rooms overlooks the beautiful communal grounds, a three piece bathroom, large living area and separate modern kitchen. The property also benefits from uPVC double glazed windows throughout and a uPVC front door.

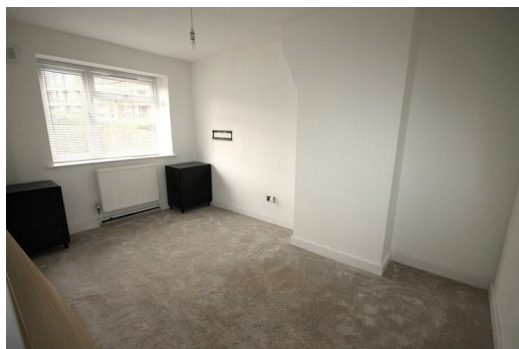
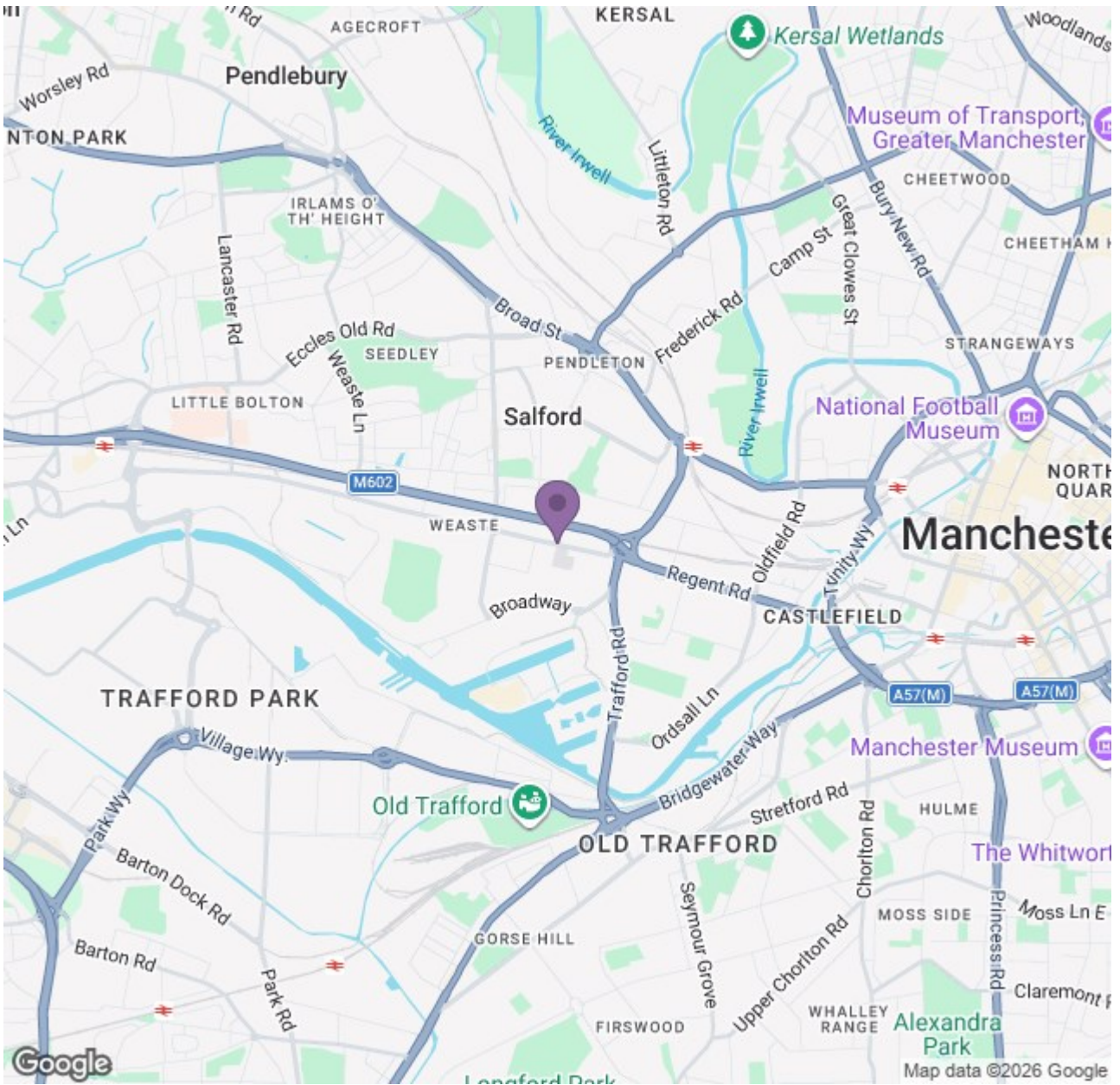
If you are interested in having a closer look, or have any questions, don't hesitate to get in touch. Images are for marketing purposes only.

Available Now  
Deposit: £1320  
Council Tax Band: A  
Part-furnished



# Ascend

Built on higher standards



Energy Efficiency Rating		Environmental Impact (CO <sub>2</sub> ) Rating	
Current	Target	Current	Target
A	A	A	A
B	B	B	B
C	C	C	C
D	D	D	D
E	E	E	E
F	F	F	F
G	G	G	G

England & Wales

# Ascend

Built on higher standards