



Linnet Close, Waterlooville PO8 9UY

welcome to

Linnet Close, Waterloo

A well-presented home on Linnet Close offers bright, spacious accommodation, a pleasant garden and a convenient location close to local amenities and transport links, making it an ideal choice for a range of buyers.

Entrance Hall

Door to WC. Storage cupboard, door to kitchen/diner.

W C

Low level WC.

Kitchen / Diner

Double glazed window to front aspect. Range of wall and base units with work surface over, incorporating one and a half bowl sink unit with mixer tap over. Integral low level oven and hob with extractor hood over. Space for washing machine, space for table and chairs. Tiled floor, radiator, door to hall and door to lounge.

Lounge

Double glazed sliding patio doors to rear garden. Laminate flooring, radiator, fireplace with hearth and mantel over.

First Floor Landing

Doors to:

Bedroom One

Double glazed window to front aspect. Carpet flooring, radiator.

Bedroom Two

Double glazed window to rear aspect. Carpet flooring, radiator.

Bedroom Three

Double glazed window to rear aspect. Carpet flooring, radiator.

Bathroom

Double glazed window to front aspect. Panel enclosed bath with shower over, low level and pedestal wash hand basin. Tiled walls, heated towel rail.

Outside

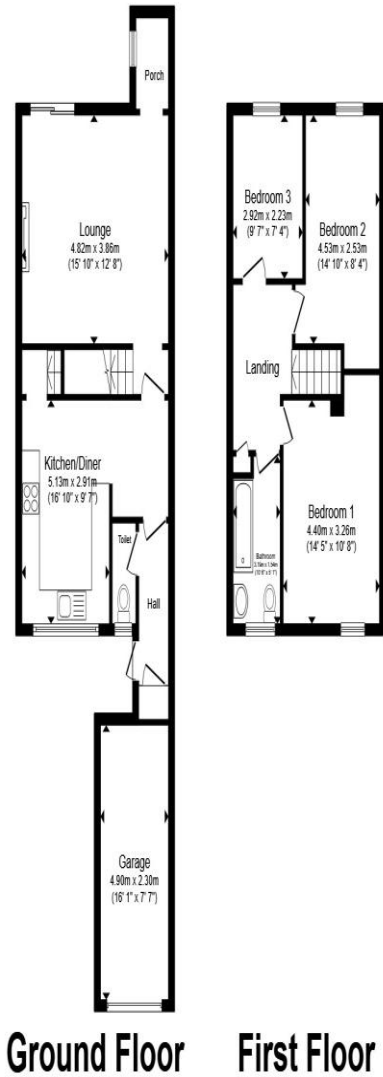
Communal car park.

Front

Driveway, providing off road parking. Garage with up and over door.

Rear Garden

Laid to lawn with patio area and pathway to rear gate. Enclosed by panel fencing.



Total floor area 104.9 m² (1,130 sq.ft.) approx

This floor plan is for illustrative purposes only. It is not drawn to scale. Any measurements, floor areas (including any total floor area), openings and orientation are approximate. No details are guaranteed, they cannot be relied upon for any purpose and they do not form part of any agreement. No liability is taken for any error, omission or misstatement. A party must rely upon its own inspection(s). Powered by www.propertybox.io



welcome to
Linnet Close,
Waterlooville

- Quiet Cul-de-Sac Location
- Bright, Well Presented Home
- Private Rear Garden
- Close to Shops & Schools
- Easy A3 Access

Tenure: Freehold EPC Rating: Awaited
Council Tax Band: B

£270,000



view this property online fox-and-sons.co.uk/Property/WLV109784



Property Ref:
WLV109784 - 0002

1. MONEY LAUNDERING REGULATIONS Intending purchasers will be asked to produce identification documentation at a later stage and we would ask for your co-operation in order that there is no delay in agreeing the sale. 2. These particulars do not constitute part or all of an offer or contract. 3. The measurements indicated are supplied for guidance only and as such must be considered incorrect. Potential buyers are advised to recheck measurements before committing to any expense. 4. We have not tested any apparatus, equipment, fixtures or services and it is in the buyers interest to check the working condition of any appliances. 5. Where an EPC, or a Home Report (Scotland only) is held for this property, it is available for inspection at the branch by appointment. If you require a printed version of a Home Report, you will need to pay a reasonable production charge reflecting printing and other costs. 6. We are not able to offer an opinion either written or verbal on the content of these reports and this must be obtained from your legal representative. 7. Whilst we take care in preparing these reports, a buyer should ensure that his/her legal representative confirms as soon as possible all matters relating to title including the extent and boundaries of the property and other important matters before exchange of contracts.

Fox & Sons is a trading name of Sequence (UK) Limited which is registered in England and Wales under company number 4268443, Registered Office is Cumbria House, 16-20 Hockliffe Street, Leighton Buzzard, Bedfordshire, LU7 1GN. VAT Registration Number is 500 2481 05.

fox & sons



023 9226 2447



Waterlooville@fox-and-sons.co.uk



81B London Road, WATERLOOVILLE,
Hampshire, PO7 7ES



fox-and-sons.co.uk