



Queens Terrace

Isleworth, TW7

£500,000

Situated in the heart of Old Isleworth, this two double bedroom Victorian cottage is located close to the River Thames and ideal for access to St Margarets train station, a range of excellent local schools and the cafes, shops and bars of Old Isleworth. The property is well presented throughout and the ground accommodation offers a front reception room with a bay window, a good sized kitchen/diner with direct access to the garden and a lovely family bathroom. The first floor offers two double bedrooms along with access to loft space. Externally the property offers a lovely south facing rear garden with an outbuilding. The property also benefits from double glazing, gas central heating and there is potential to extend the property subject to the relevant planning consent.

- Two Double Bedrooms
- South Facing Garden
- Potential to Extend (STPP)
- Located in the Heart of Old Isleworth
- Close to the River
- Victorian Property



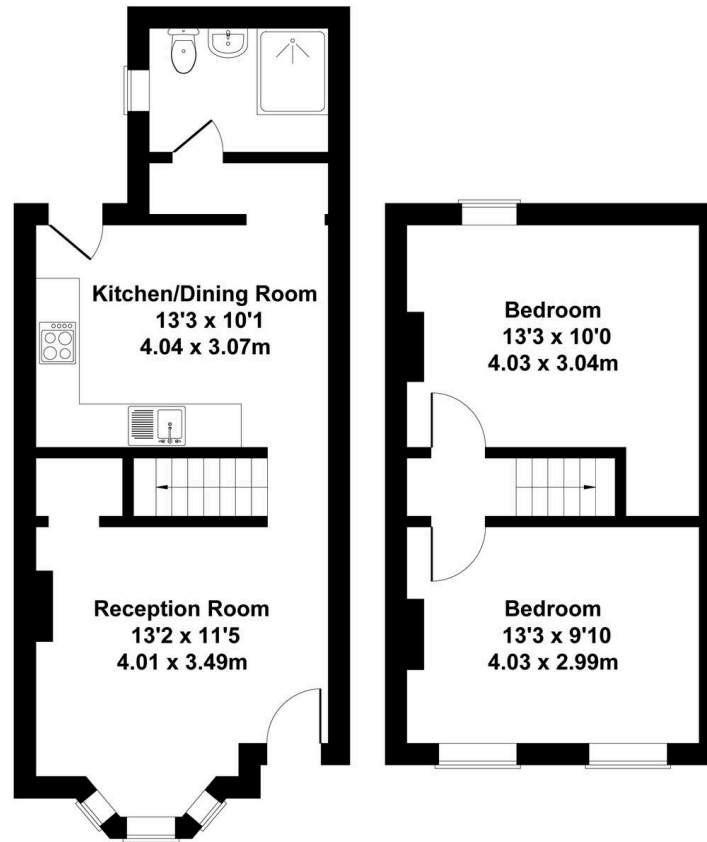
SCAN HERE
FOR
PROPERTY
DETAILS





Queens Terrace, Isleworth, TW7

Approximate Gross Internal Area
721 sq ft - 67 sq m



GROUND FLOOR

FIRST FLOOR

This floorplan is for guidance only and does not form part of an offer or contract.
Buyers or tenants should verify all details through inspection, searches, and surveys.
Measurements are approximate and should not be relied upon for valuation or transactions.

Produced by Plan Portal.
www.evovelondon.co.uk

