

£310,000

THE CROSSWAY, PORTCHESTER, PO16 8PE



- Two Double Bedrooms
- Entrance Hallway & Study Area
- Lounge
- 17' Kitchen/Breakfast Room
- Lean-To Overlooking The Garden
- Shower Room
- Double Glazed Windows & Gas Central Heating
- Block Paved Off Street Parking
- Generous Enclosed Rear Garden
- NO CHAIN AHEAD

Portchester Office

92 West Street Portchester Hampshire PO16 9UQ

Tel: 02392 327 070 | E: tiffany.porchester@fenwicks-estates.co.uk

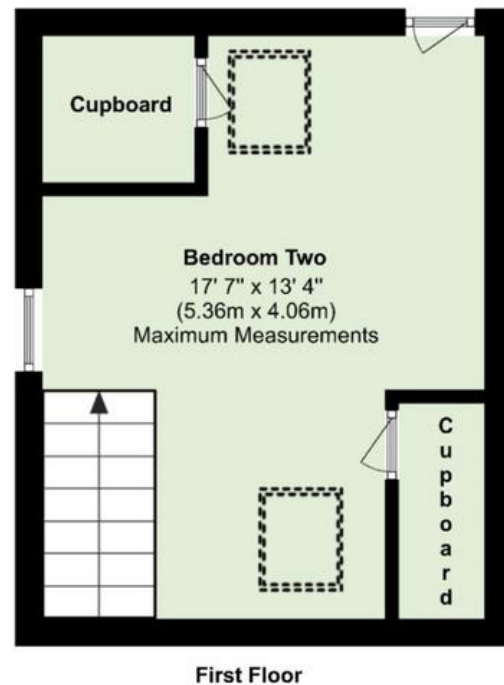
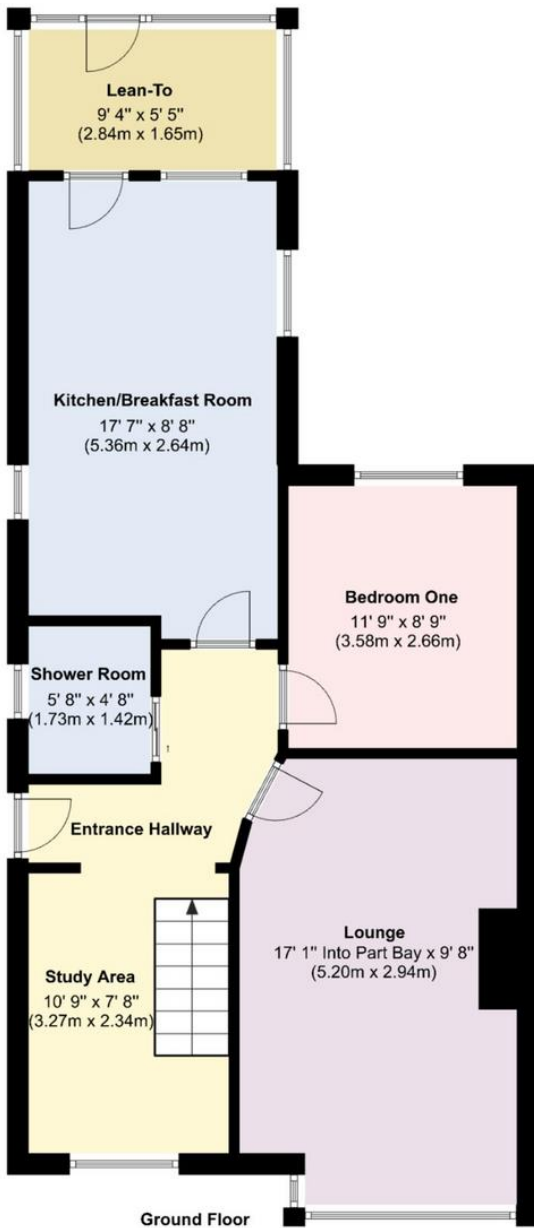
www.fenwicks-estates.co.uk

Property Reference: P2877

Council Tax Band: C

Score	Energy rating	Current	Potential
92+	A		
81-91	B		
69-80	C		72 C
55-68	D	65 D	
39-54	E		
21-38	F		
1-20	G		

Floor Plans (For illustrative purposes and not drawn exactly to scale)



Portchester Office

92 West Street Portchester Hampshire PO16 9UQ

Tel: 02392 327 070 | E: tiffany.porchester@fenwicks-estates.co.uk

www.fenwicks-estates.co.uk



The Accommodation Comprises:-

Covered entrance and UPVC part double glazed front door to:-

Entrance Hallway:-

Textured ceiling and doors to:

Study Area:-

10' 9" x 7' 8" (3.27m x 2.34m)

Textured ceiling, UPVC double glazed window to the front elevation, radiator, stairs leading to the first floor.



Lounge:-

17' 1" Into Part Bay x 9' 8" (5.20m x 2.94m)

UPVC double glazed part Bay window to the front elevation, radiator, TV aerial point, feature fireplace with gas fire inset and coving to textured ceiling.



Kitchen/Breakfast Room:-

17' 7" x 8' 8" (5.36m x 2.64m)

A triple aspect room with UPVC double glazed windows to the side elevations and further window to the rear elevation, the kitchen is fitted with a range of base, eye and larder style storage cupboards, roll top work surfaces incorporating a seating area, single bowl single drainer sink unit inset with a mixer tap and part tiled walls, space for cooker and fridge freezer, radiator, plumbing for washing machine, wall mounted gas central heating boiler. Glazed door to:

Portchester Office

92 West Street Portchester Hampshire PO16 9UQ

Tel: 02392 327 070 | E: tiffany.porchester@fenwicks-estates.co.uk

www.fenwicks-estates.co.uk



Lean-To:-
9' 4" x 5' 5" (2.84m x 1.65m)

UPVC double glazed windows and doors overlooking and accessing the rear garden, storage cupboards, power connected, space and vent for tumble dryer



Bedroom One:-
11' 9" x 8' 9" (3.58m x 2.66m)

UPVC double glazed window to the rear elevation overlooking the garden, radiator, picture rail and coved ceiling.



Portchester Office

92 West Street Portchester Hampshire PO16 9UQ

Tel: 02392 327 070 | E: tiffany.porchester@fenwicks-estates.co.uk

www.fenwicks-estates.co.uk



Shower Room:- 5' 8" x 4' 8" (1.73m x 1.42m)

Opaque UPVC double glazed window to the side elevation, suite comprising shower cubicle with Triton electric shower, close coupled WC, wash and basin with vanity storage below, heated towel rail and tiled walls.



First Floor:-

Bedroom Two:- 17' 7" x 13' 4" (5.36m x 4.06m) Maximum Measurements

A triple aspect room with UPVC double glazed window to the side elevation and additional double glazed Velux style windows to the front and rear elevations, three radiators, access to eaves storage flat and sloping ceiling.

Outside:-

Double opening wrought iron gates lead to the generous block paved off street parking area for several vehicles.

Portchester Office

92 West Street Portchester Hampshire PO16 9UQ

Tel: 02392 327 070 | E: tiffany.porchester@fenwicks-estates.co.uk

www.fenwicks-estates.co.uk



Rear Garden:-

A block paved pathway and wooden gate lead to the enclosed rear garden with patio areas for entertaining purposes, lawn section with shrub borders and mature trees, shed and greenhouse to remain.



Disclaimer: These particulars are set out as a general outline in accordance with the Consumer Protection from Unfair Trading Regulations 2008 (CPR's) and Business Protection from Misleading Marketing Regulations 2008 (BPR's) only for the guidance of intending purchasers or lessees, and do not constitute any part of an offer or contract. Details are given without any responsibility, and any intending purchasers, lessees or third parties should not rely on them as statements or representations of fact, but must satisfy themselves by inspection or otherwise as to the correctness of each of them.

We have not carried out a structural survey and the services, appliances and specific fittings have not been tested. All photographs, measurements, floor plans and distances referred to are given as a guide only and should not be relied upon for the purchase of carpets or any other fixtures or fittings. Gardens, roof terraces, balconies and communal gardens as well as tenure and lease details cannot have their accuracy guaranteed for intending purchasers. Lease details, service ground rent (where applicable) are given as a guide only and should be checked and confirmed by your solicitor prior to exchange of contracts.

No person in the employment of Fenwicks Estates Ltd has any authority to make any representation or warranty whatever in relation to this property. Purchase prices, rents or other prices quoted are correct at the date of publication and, unless otherwise stated, exclusive of VAT.

Data Protection: We retain the copyright in all advertising material used to market this Property.

Money Laundering Regulations 2017: Intending purchasers will be required to produce identification documentation once an offer is accepted

Your home is at risk if you do not keep up repayments on mortgage or other secured loans.

Portchester Office

92 West Street Portchester Hampshire PO16 9UQ

Tel: 02392 327 070 | E: tiffany.porchester@fenwicks-estates.co.uk

www.fenwicks-estates.co.uk

