



CLEMENTS
HABBA



For Sale



Christchurch, Kew Road, Richmond

£1,050,000

Leasehold - Share of Freehold







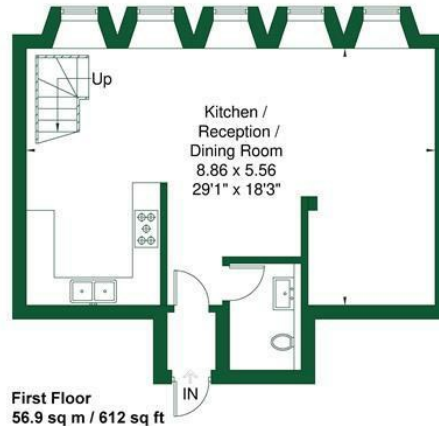
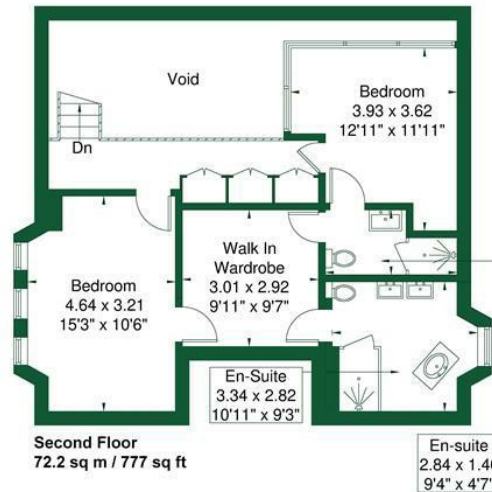
Summary Description

A truly unique split-level two bedroom, two bathroom apartment with gated off-street parking set within an impressive converted Victorian Church on Kew Road, close to Richmond Station.

- Unique Split-Level Apartment Within a Converted Victorian Church
- Zoned Underfloor Heating Throughout
- Share of Freehold (970 + years)
- Full Height Stained Glass Church Windows.
- Service Charge Circa £3600pa (Large Sinking Fund)
- Two Double Bedrooms, Both With En-Suite Bathrooms
- Gated And Secure Off-Street Parking
- 1,389 sq ft - 129.1 SqM
- Downstairs Guest WC
- No Chain

Christchurch

Approximate Gross Internal Area = 129.1 sq m / 1389 sq ft
(Including Void)



Although every attempt has been made to ensure accuracy, all measurements are approximate.
The floorplan is for illustrative purposes only and not to scale.
© www.perspective.co.uk

