



Guide Price
£300,000

Freehold

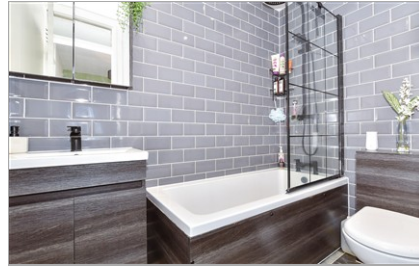
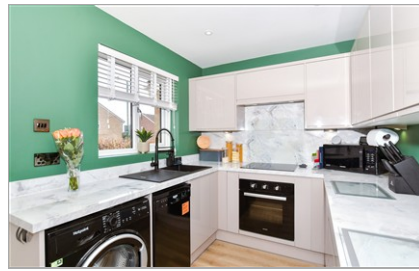
2x  1x  1x 

**Sherbourne Drive,
Barming, Maidstone,
Kent ME16**

OVER 60?

Secure this property
for up to **59% less!**

Wards
Helping you move forwards



Main features

- Ideal first time buy
- Refitted kitchen and replacement double glazing
- Riverside walks
- Feature lounge with spiral staircase
- 2 allocated parking bays

Accommodation

GROUND FLOOR

Kitchen: 10'6 x 7'6 (3.20m x 2.29m)
Lounge: 15'8 x 11'6 (4.78m x 3.51m)
Conservatory: 11'11 x 9'7 (3.63m x 2.92m)

FIRST FLOOR

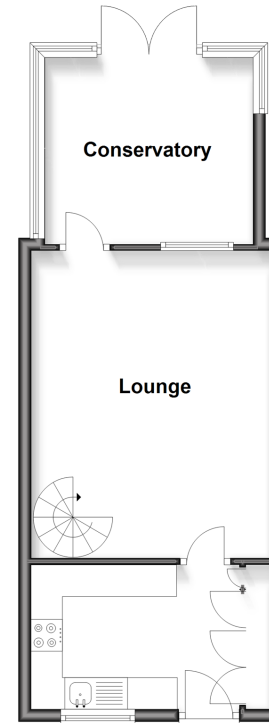
Landing
Bedroom 1: 10'6 x 8'4 (3.20m x 2.54m)
Bedroom 2: 12'6 x 7'6 (3.81m x 2.29m)
Bathroom

OUTSIDE

Rear Garden
Small Frontage
Allocated Parking

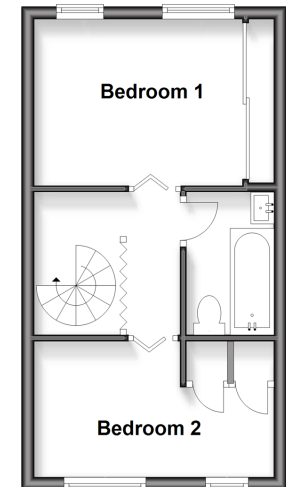
Ground Floor

Approx. 37.8 sq. metres (407.1 sq. feet)



First Floor

Approx. 27.7 sq. metres (298.4 sq. feet)



Call Maidstone - 01622 683737 ■ wardsofkent.co.uk

■ Legal advice should be taken to verify fixtures/fittings, planning, alterations and/or lease details
■ Through a Homewise Home For Life Plan people aged 60+ can secure this property for up to 50% less, by purchasing a Lifetime Lease.

■ Appliances & services are untested, dimensions are approximate and floor plans are not to scale



13146137/20251004/TB/DS