

67 Buckingham Road

Epping, Epping

Beautifully chic, spacious and full of style, this two bedroom apartment in Buckingham Road, Epping is a gorgeous place to call home. Filled with modern interiors and just a short walk to the station and high street, there's much to love here.

Council Tax band: E

Tenure: Leasehold

- Two Double Bedrooms
- Stylish Apartment
- Balcony
- Short Walk to Epping High Street and Station
- Allocated Parking



Entrance Hallway

Kitchen / Living / Dining
10' 2" x 21' 5" (3.11m x 6.52m)

Bedroom
9' 5" x 11' 3" (2.87m x 3.42m)

Bedroom
8' 7" x 11' 3" (2.61m x 3.43m)

Bathroom
6' 6" x 5' 6" (1.98m x 1.67m)

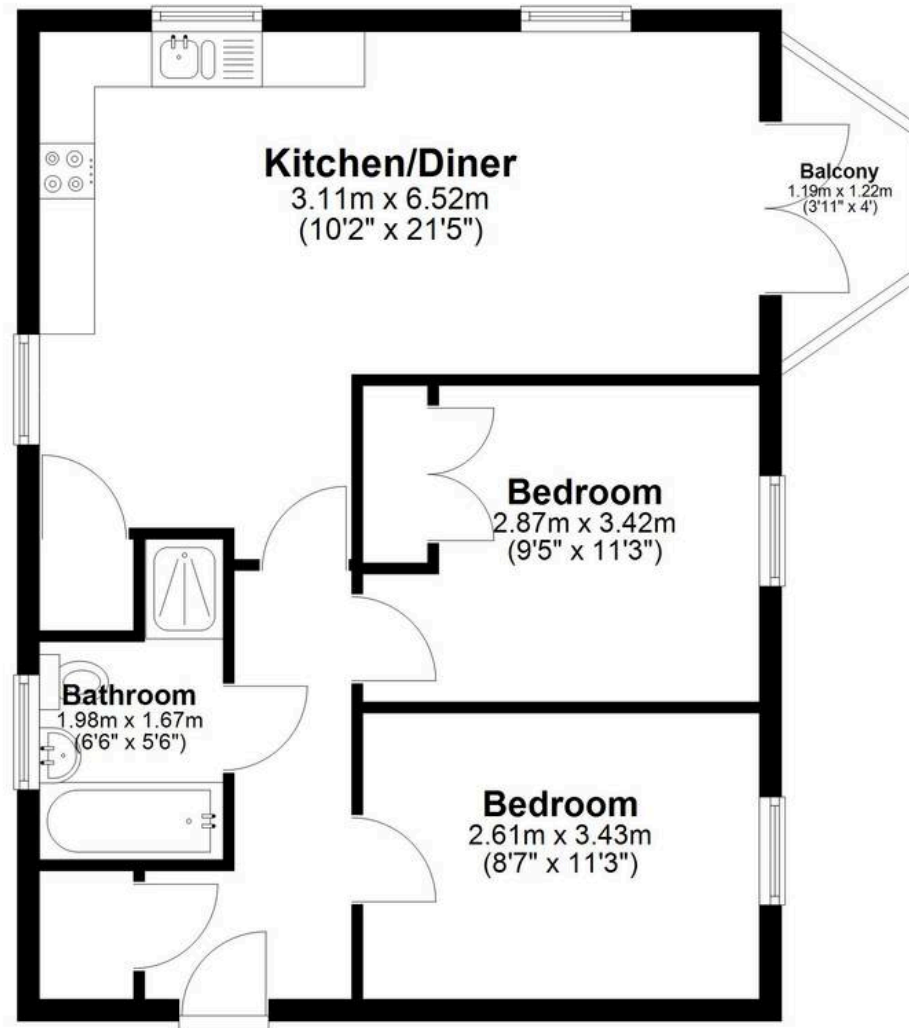






Second Floor

Approx. 56.2 sq. metres (604.8 sq. feet)



Total area: approx. 56.2 sq. metres (604.8 sq. feet)

This floor plan has been created by a third party and should be used as a general outline for guidance only. Any areas, measurements or distances quoted are approximate and any intending purchaser or lessee should satisfy themselves by inspection, searches, enquiries and/or full survey as to the correctness of each statement. We accept no responsibility or liability for any loss whatsoever that may arise as a result of this plan and the information contained within.

© @modephotouk | www.modephoto.co.uk
Plan produced using PlanUp.□

Buckingham Road