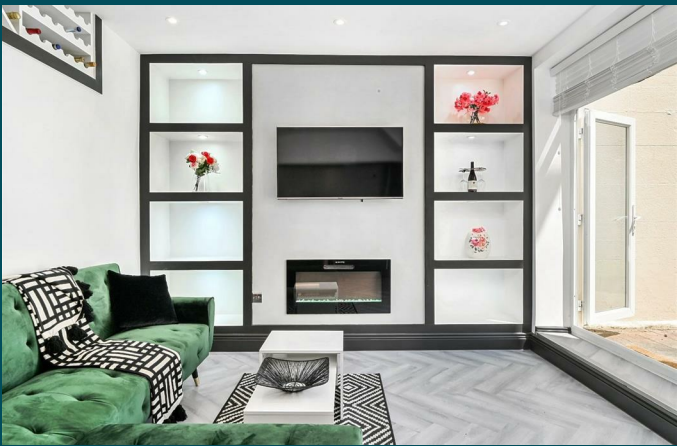
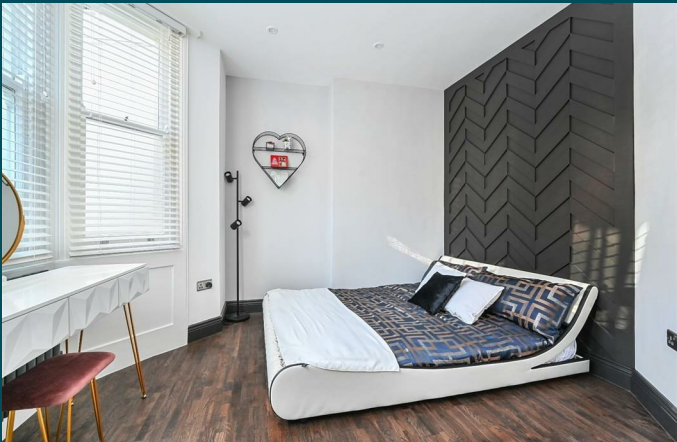




96a Ditchling Rise
Brighton BN1 4QQ



96a Ditchling Rise

Brighton, BN1 4QQ

Guide price £375,000

Pearson Keehan are delighted to bring to the market this exquisite and superbly refurbished two bedroom garden apartment situated in a highly sought-after district of Brighton close to a host amenities, train links and the city centre.

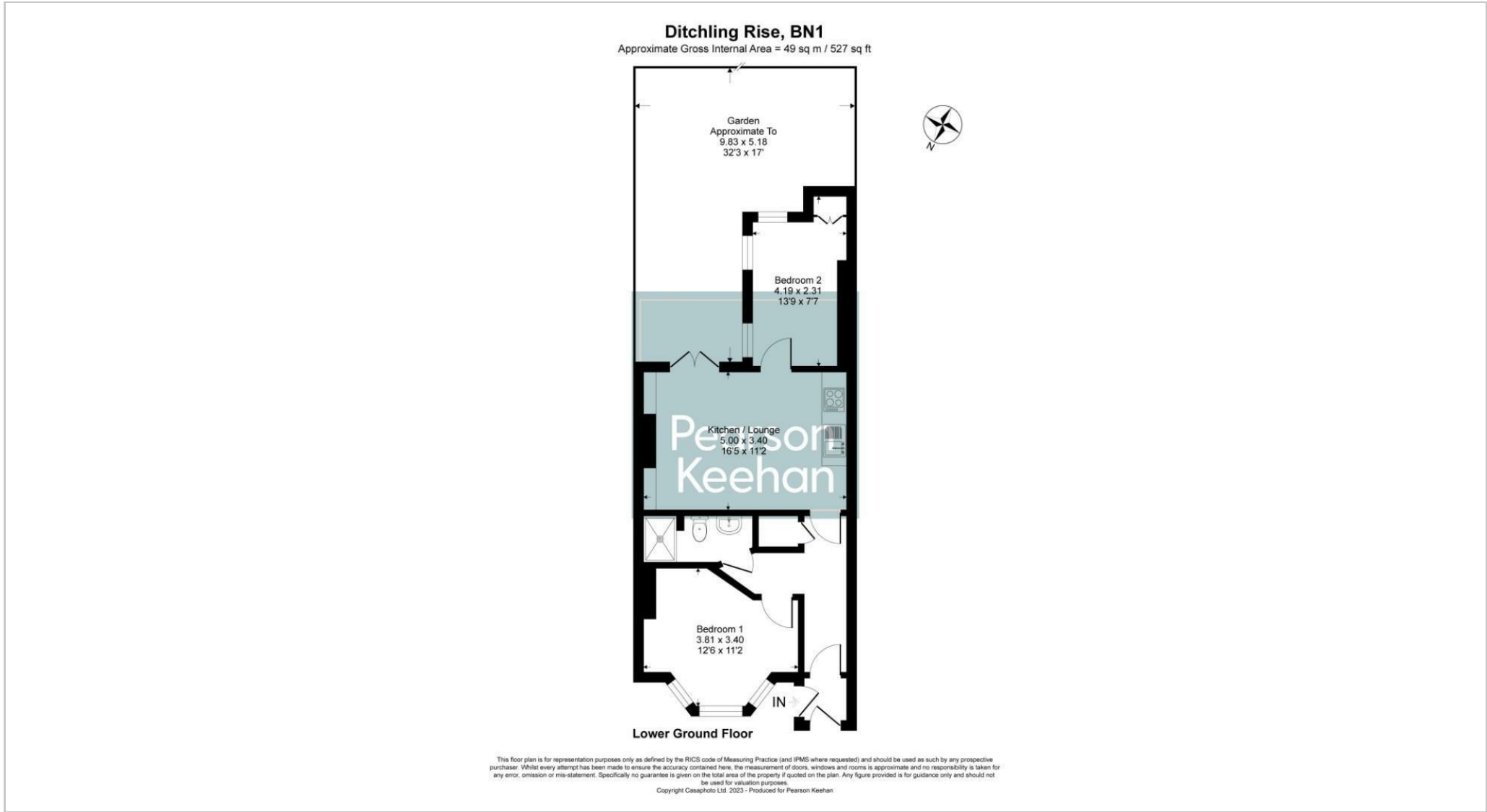
Stepping inside the property via its own street entrance, the apartment is set within a bay-fronted Victorian building and the accommodation briefly comprises of two double bedrooms, luxury tiled shower room and a fantastic open plan kitchen/living space which provides access out to the sunny south facing garden.

The kitchen/living space is a particular feature of the property with the kitchen benefitting from integrated appliances and being contemporary in design. Furthermore, the room has a fantastic media wall, where you can sit back and enjoy your favourite film choices of an evening.

Outside, the delightful south facing garden is a natural suntrap and is a lovely space to enjoy outside dining and entertaining. The garden is part paved and mainly laid with artificial grass, meaning low maintenance all year round.

In terms of location, Ditchling Rise is set within a popular residential area close to a host of favoured coffee shops, restaurants, supermarkets and gastro pubs. Brighton City Centre is within an easy reach, as is London Road Station & Brighton Station with the latter providing direct links to Gatwick & London.

The property is being sold with no onward chain and benefits from a share in the freehold.



Pearson
Keehan