



Two Bedroom  
Apartment in  
Central Tetbury  
Townhouse

£1,250 PCM

Flat 1, Crew House  
15 Market Place  
Tetbury  
GL8 8DD



Victoria Allman  
Lettings

- Impressive first floor apartment in a character Georgian townhouse
- Fabulous location in the heart of Tetbury
- Period features including high ceilings and sash windows
- Light and airy living room with views over Market House
- Two double bedrooms
- Fitted kitchen with appliances
- EPC rating D
- Council Tax Band C (Cotswold)
- Available unfurnished on a long-let from July



2



1



1



D

## SUMMARY

Situated within the heart of the sought-after Cotswold market town of Tetbury, this beautifully presented and characterful two-bedroom apartment occupies the first floor of a prestigious Georgian townhouse. Just a short walk from all the town's amenities, it enjoys a pleasant outlook over the historic Market House. An ideal base for a single professional or couple looking to enjoy all this thriving town has to offer.

## DESCRIPTION

Newly decorated throughout with a new gas boiler, this light and airy apartment retains a wealth of period features, including high ceilings and sash windows, while offering modern comforts for easy living.

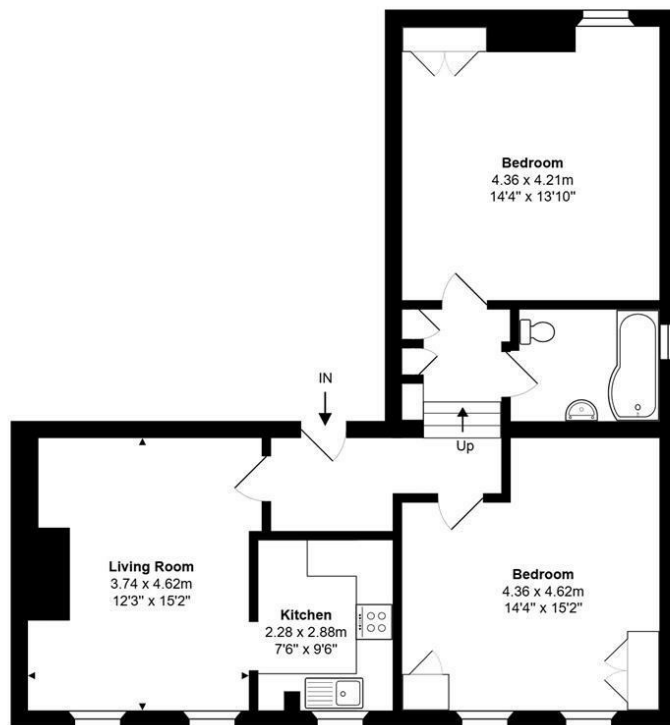
A private entrance leads up to the first floor, opening into a generous living room and a fitted kitchen with shaker-style cupboards. Both bedrooms are well-proportioned doubles, each enjoying plenty of natural light, while the bathroom is fitted with a bath with shower over.

In all, the apartment extends to approximately 838 sq ft (77.8 sq m).

## SITUATION

Tetbury is a thriving and historic market town situated within the Cotswold Area of Outstanding Natural Beauty. The town is well known for its royal connections, with King Charles' Highgrove House and Princess Anne's Gatcombe Park both close by, and the beautiful Westonbirt Arboretum also less than 10 minutes' drive away. Tetbury town centre offers a broad range of shops and amenities for everyday needs, including a large supermarket, hospital, and post office. There are also a number of quality boutiques, delicatessens and antique shops, excellent restaurants and cafes, as well as a busy social scene catering for all ages. Conveniently located less than half an hour from both the M4 and M5 motorways, Tetbury is within easy reach of Cirencester, Cheltenham, Bath, Bristol and Swindon. There is good access to nearby Kemble Railway Station, which provides regular fast services to London and other regional centres.





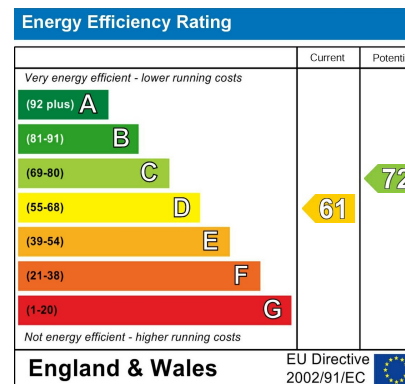
First Floor

Total Area: 77.8 m<sup>2</sup> ... 838 ft<sup>2</sup>

All measurements are approximate and for display purposes only

## REQUIRED INFORMATION

We understand the property has mains electricity, water, drainage and gas central heating. Superfast broadband is available in this area; mobile coverage is classed as good outdoors and in-home – please check the Ofcom website for more information. We are not aware of any issues of potential impact including building safety, planning permission or proposed developments, flood risk, and other restrictions.



## DIRECTIONS

From the mini-roundabout in the centre of Tetbury, head east onto Market Place. The Snooty Fox Hotel will be on your left hand side. The property is located on the left hand side after 100m, next to a small parking area and just before the road bends round to the right.

Postcode: GL8 8DD

What3Words:  
///unsightly.oblige.polo

## CONTACT

lettings@victoriaallman.co.uk  
01666 338866

www.victoriaallman.co.uk



**Victoria Allman**  
lettings