

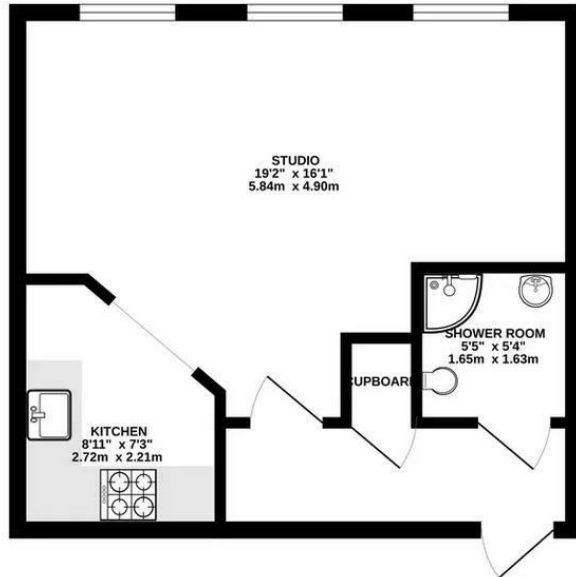


67 City House London Road, Croydon, CR0 2NS

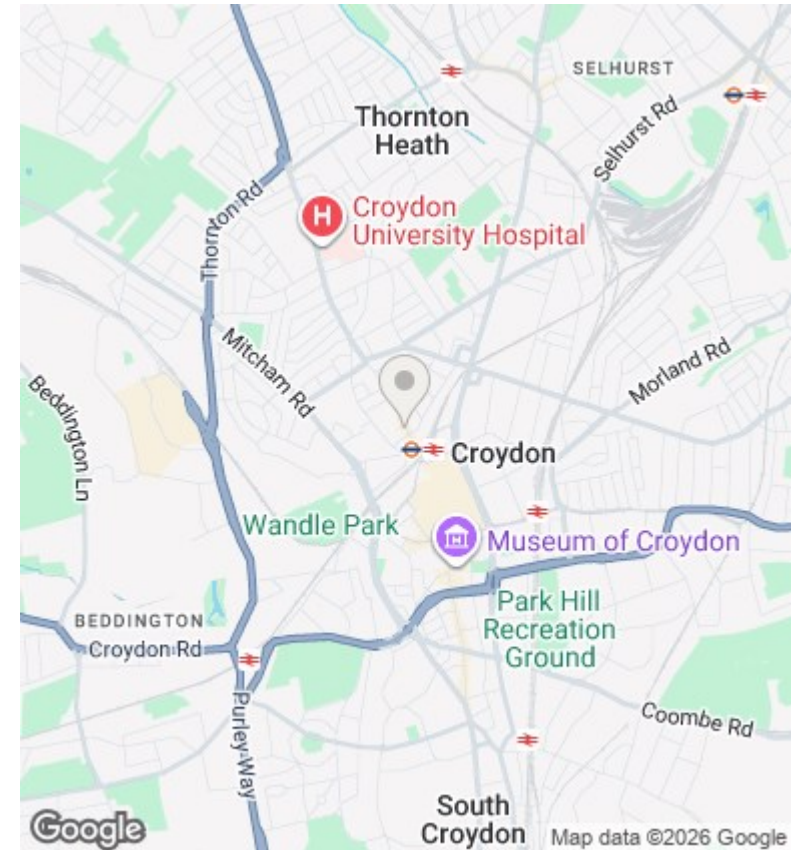
Offers In Excess Of £125,000

- Contemporary Spacious Studio Apartment
- Panoramic Views
- 5 Minute walk to Croydon Town Centre
- Communal Gardens
- Chain Free
- Easy Access to West Croydon Station
- Sought After Location
- Concierge
- Ideal For First Time Buyer or Investment Purchase

342 sq.ft. (31.8 sq.m.) approx.



TOTAL FLOOR AREA: 342 sq.ft. (31.8 sq.m.) approx.



Directions

Viewings

Viewings by arrangement only. Call 0208 681 8133 to make an appointment.

Council Tax Band

B

EPC Rating:

B

Energy Efficiency Rating		Current	Potential
<i>Very energy efficient - lower running costs</i>			
(92 plus) A			
(81-91) B		82	82
(69-80) C			
(55-68) D			
(39-54) E			
(21-38) F			
(1-20) G			
<i>Not energy efficient - higher running costs</i>			
England & Wales		EU Directive 2002/91/EC	