



## City Link, Hessel Street, Salford

£825 PCM

There's something about City Link that just gets it right. Maybe it's the history, maybe it's the location, or maybe it's the fact you can be in the heart of Manchester quicker than you can finish your morning coffee. Either way, this is one of those developments that quietly does everything you need it to, without any fuss.

We are delighted to offer this well presented one bedroom, ground floor apartment, available furnished. The property itself is bright, comfortable and easy to settle into, with a layout that just works. The living space is welcoming and opens out onto your own outdoor space, perfect for a bit of fresh air, a morning brew, or convincing yourself you'll sit out there more often than you probably will.

This well-proportioned one bedroom apartment, offers plenty of space whether you are sharing, working from home, or just like having a bit of extra room to breathe. The apartment is presented in good condition throughout, making it a straightforward move for anyone looking for something clean, practical and well located.

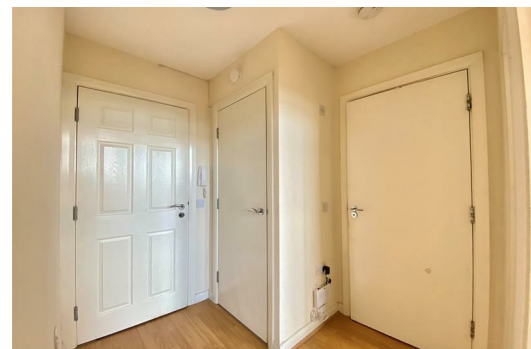
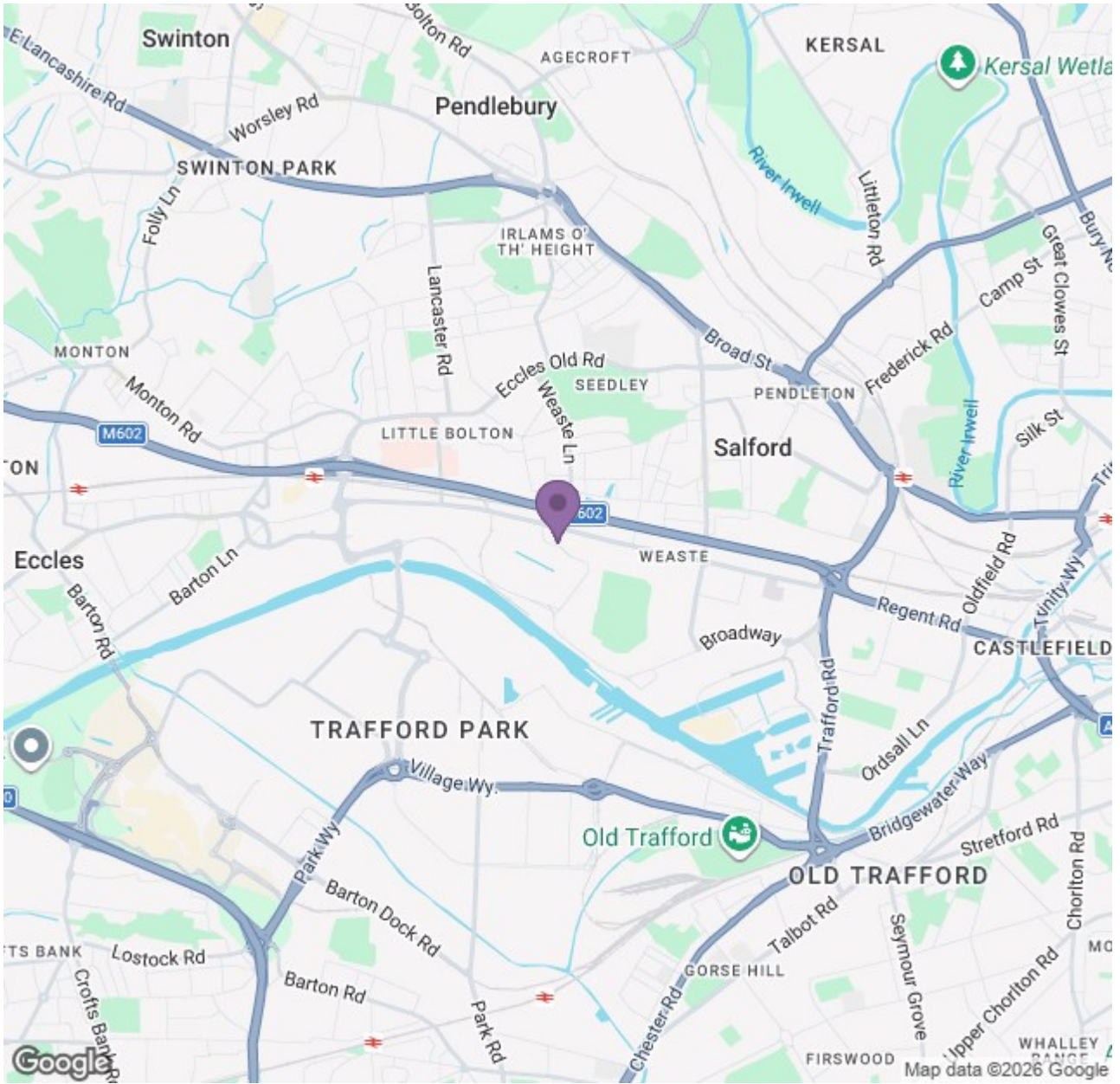
City Link, as the name suggests, sits right between Salford and Manchester, and genuinely lives up to it. It's one of those places people move into for convenience and end up staying for much longer.

For commuters, it's hard to beat. Weaste Metrolink station sits directly opposite, making travel into Manchester city centre or across to Salford Quays simple and quick. MediaCity is either a short walk or just a couple of stops on the tram, offering a great mix of bars, restaurants, shops and everything else you might need day to day.



# Ascend

Built on higher standards



Energy Efficiency Rating		Environmental Impact (CO <sub>2</sub> ) Rating	
Band	Score	Band	Score
A	92-100	A	1-10
B	81-91	B	11-20
C	69-80	C	21-30
D	55-68	D	31-40
E	39-54	E	41-50
F	13-38	F	51-60
G	1-12	G	61-70

Energy Efficiency Rating: **C11** (Score: 69)  
 Environmental Impact (CO<sub>2</sub>) Rating: **B8** (Score: 21)

# Ascend

Built on higher standards