



Bravington Road, London
W9

£2,500 PCM SHORT LET

SOMMERVILLE FLURY

Bravington Road, London

W9

A bright and spacious one-bedroom apartment arranged over the first and second floors of a well-maintained Victorian conversion. Offering 659 sq ft of stylish living space, the property is entered on the first floor and features a generous double bedroom positioned at the rear of the building, enjoying tranquil views over neighbouring gardens. Recently redecorated throughout, the upper floor hosts a large north-west facing reception room, a generously sized kitchen, and a well-proportioned bathroom with a shower over the bath. Flooded with natural light, the apartment is presented in excellent condition and offered fully furnished

Location :-

Bravington Road is fantastically located in central Maida Vale, being less than half a mile to both Maida Vale and Queens Park underground (Bakerloo Line) and the shops, cafes and restaurants of both Little Venice, Maida Vale and Queens Park. It is also just over one mile to the world famous Portobello Road market.

Tenancy :- Short Let

Fully Furnished

Available :- Mid February

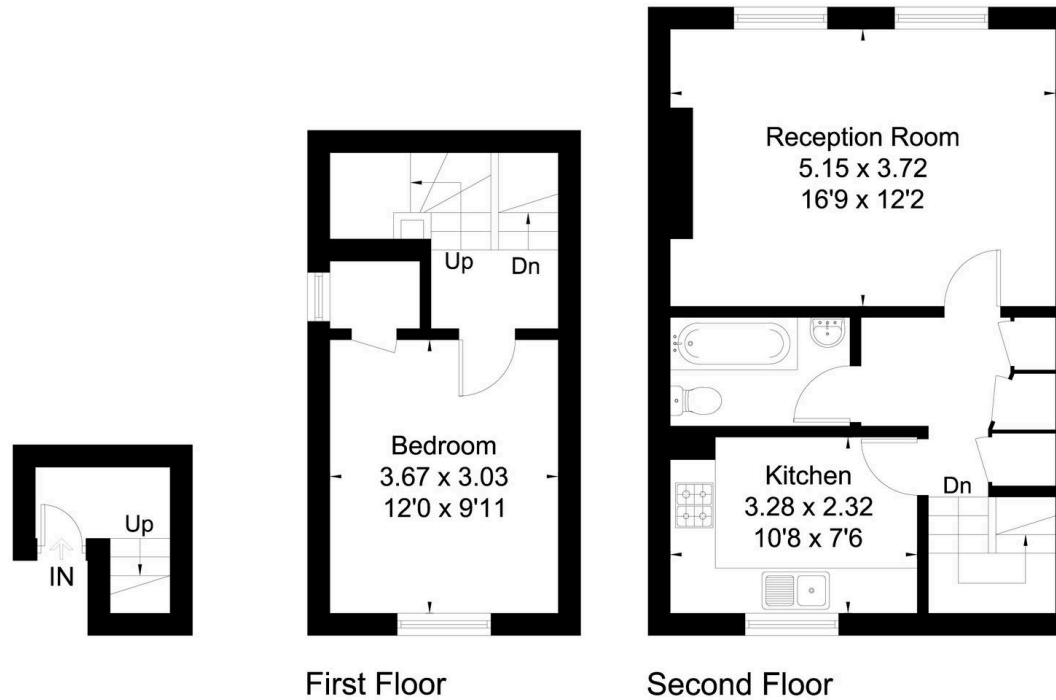






BRAVINGTON ROAD, W9

Approximate Floor Area = 61.3 sq m / 659 sq ft



This floor plan has been drawn in accordance with RICS Property Measurement 2nd edition.

All measurements, including the floor area, are approximate and for illustrative purposes only. @fourwalls-group.com #100671

SOMMERVILLE FLURY

21 Ellis Street

Knightsbridge

LONDON

SW1X 9AL

T:- +44(0)20 3479 5314

E: info@sommervilleflury.com