



Manor Gardens, SW20
£1,795,000



Manor Gardens, SW20

Undoubtedly one of the finest examples of a fully renovated Edwardian house, this stunning family home offers four/five bedrooms, three bathrooms and a large south facing garden, all exceptionally designed.

The ground floor has underfloor heating throughout, with a striking entrance hall setting the tone of grandeur for the house. The front reception room has bespoke built in cabinetry and an exposed brick fireplace. Before reaching the expansive kitchen/ breakfast room, there's a utility room and separate w/c.

The rear of the house has been beautifully extended, using the most desirable materials, complete with a Tom Howley kitchen, a rotunda style breakfast area, a cosy reception room and French doors to the fully landscaped, seventy foot south facing garden.

The first floor combines an expansive master suite, with a large walk in wardrobe/ nursery/ fifth bedroom and shower room, there's a further double bedroom and luxury four piece bathroom. The loft has been converted, offering two double bedrooms, a home office and a luxury shower room.

Located in a beautiful tree-lined cul de sac, nestled in the heart of Merton Park. Often described as London in the countryside, there are also excellent transport links and outstanding schools on your doorstep.

Features

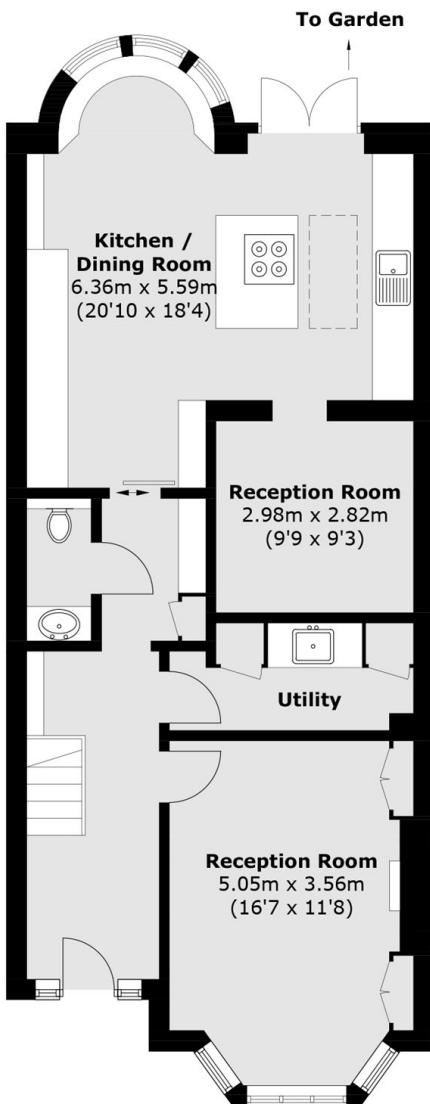
- Four/Five Bedrooms
- Study And Utility Room
- South Facing Garden
- Full Luxury Refurbishment
- Edwardian Cul De Sac
- Outstanding School Catchment



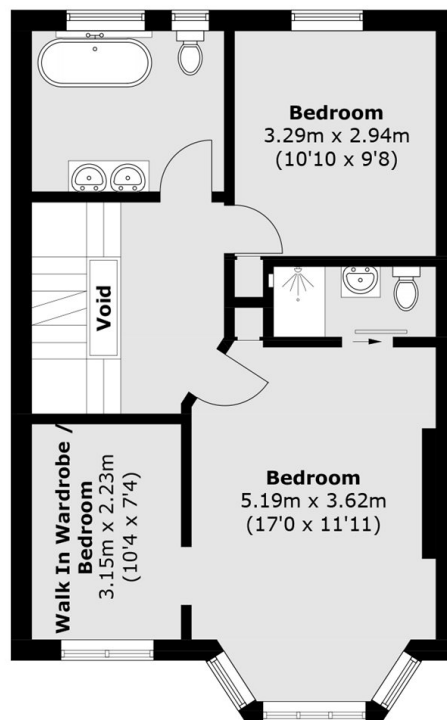




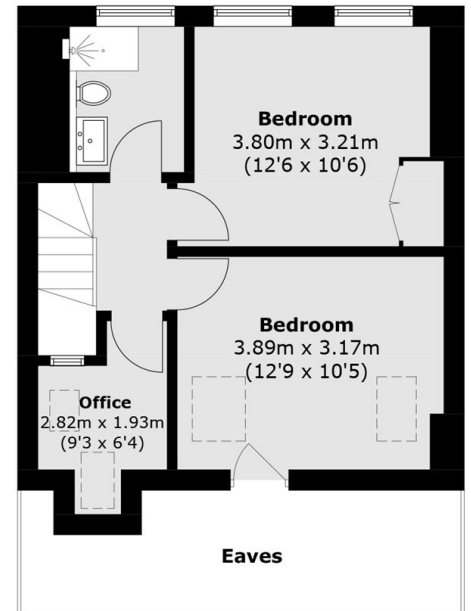
Manor Gardens, London, SW20



Ground Floor



First Floor



Second Floor

Total area (approx.): 168.3 sq. m (1,811.5 sq. ft)
(Excluding Eaves / Void)