



## 14 Crew Lane Close, Southwell, NG25 0JA



Book a Viewing!

**£384,995**

Set across three thoughtfully designed floors, this contemporary home offers flexible and versatile living perfectly suited to modern family life. The ground floor welcomes you with an entrance hallway, a convenient doakroom and a study/snug ideal for home working or quiet relaxation. At the heart of the home sits the impressive L-shaped kitchen diner, opening directly onto the rear garden and enhanced by a charming bay window—an ideal space for everyday living and entertaining alike. The first floor provides a living room, a well-appointed family bathroom, and a generous second bedroom, offering excellent separation between living and sleeping spaces. Occupying the top floor are three further bedrooms, including the stylish master suite complete with fitted mirrored wardrobes and a modern en-suite shower room. A useful additional WC on this floor serves the remaining bedrooms. Externally, the property benefits from off-road parking to the front with an EV charging point, along with a half share of a large covered carport. The rear garden is mainly laid to lawn with a paved patio and attractive feature wall, creating a pleasant and low-maintenance outdoor retreat. Early viewings are highly recommended to fully appreciate the adaptable layout, contemporary finish and desirable setting within the historic Minster town of Southwell.



**SERVICES**

All mains services available. Gas central heating.

**EPC RATING** – C.

**COUNCIL TAX BAND** – D.

**LOCAL AUTHORITY** - Newark and Sherwood District Council.

**TENURE** - Freehold.

**VIEWINGS** - By prior appointment through Alasdair Morrison and Mundys.

**LOCATION**

Southwell is a picturesque market town known for its rich history and stunning architecture. Located in the heart of the English countryside, Southwell boasts a range of amenities and facilities. One of the town's most iconic landmarks is Southwell Minster, a stunning medieval cathedral. The town is also home to numerous quaint shops, charming cafes, and traditional pubs, providing plenty of options for dining and shopping.



Southwell offers schools, healthcare providers and recreational facilities, ensuring that residents have access to essential amenities. Additionally, Southwell has good transportation links, making it easy to explore the surrounding area and beyond.

## ACCOMMODATION

### ENTRANCE HALL

Stairs to the first floor with understairs storage cupboard, radiator, wood flooring and doors to study/snug, kitchen diner and downstairs WC/cloakroom.

### STUDY / SNUG

10' 4" x 10' 4" (3.15m x 3.15m) With uPVC double glazed window to the front elevation and a radiator.

### KITCHEN/DINER

L-Shaped 17' 6" x 15' 0" maximum measurements(5.33m x 4.57m) Fitted with a modern range of grey wall and base units with a work surface incorporating a sink unit with a stainless steel mixer tap, double oven, five ring gas hob and stainless steel extractor, integrated dishwasher, fridge, freezer and washing machine, radiator, tiled splashbacks, uPVC double patio doors and bay window overlooking the garden at the rear.



### WC

7' 1" x 3' 2" (2.16m x 0.97m) With a low level WC, pedestal wash hand basin, tiled splash backs, tiled floor and radiator.

### FIRST FLOOR LANDING

Stairs to the second floor, radiator and doors to the bathroom, bedroom two and to the living room.

### LIVING ROOM

15' 0" x 9' 11" (4.57m x 3.02m) With uPVC double glazed windows to the front elevation and radiators.



### FAMILY BATHROOM

6' 11" x 6' 1" (2.11m x 1.85m) A modern fitted three-piece suite comprising a panelled P-shaped bath with a mains fed shower over, low level WC and wash hand basin with vanity unit, chrome heated towel rail, extractor, tiled splashbacks and tiled flooring.

### BEDROOM TWO

15' 3" x 8' 9" (4.65m x 2.67m) With uPVC double glazed windows to the rear elevation and a radiator.

### SECOND FLOOR LANDING

Built-in storage cupboard, access to the loft, radiator and doors to the master bedroom, WC and two further bedrooms.





## MASTER BEDROOM

13' 0" to the front of the wardrobes x 8' 11" (3.96m x 2.72m) With uPVC double glazed windows to the rear elevation, radiator, built-in wardrobes with mirrored sliding doors and door to en-suite.

## EN-SUITE

6' 2" x 4' 7" (1.88m x 1.4m) Modern fitted suite comprising a shower cubicle with a mains fed shower, wash hand basin with vanity unit, and low level WC, horizontal, modern chrome radiator, LED mirror, tiled splashbacks, tiled floor, inset spotlights and extractor.

## WC

Low level WC and pedestal wash hand basin with tiled splashbacks, radiator, extractor and tiled floor.



## BEDROOM THREE

8' 6" x 7' 0" plus recess (2.59m x 2.13m) With uPVC double glazed window to the front elevation, radiator and built-in desk in recess with shelving above.

## BEDROOM FOUR

10' 1" x 6' 4" (3.07m x 1.93m) With uPVC double glazed window to the front elevation, radiator and built-in desk/dressing table.



## OUTSIDE

There is parking directly at the front of the property with an EV car charger and half of a double carport. The rear garden is mostly lawned with a paved patio area.

## WEBSITE

Our detailed website shows all our available properties and also gives extensive information on all aspects of moving home, local area information and helpful information for buyers and sellers. This can be found at [mundys.net](http://mundys.net)

## SELLING YOUR HOME – HOW TO GO ABOUT IT

We are happy to offer FREE advice on all aspects of moving home, including a Valuation by one of our QUALIFIED/SPECIALIST VALUERS. Ring or call into one of our offices or visit our website for more details.

## REFERRAL FEE INFORMATION – WHO WE MAY REFER YOU TO

Sills & Betteridge, Ringrose Law LLP, Burton & Co, Taylor Rose, Bridge McFarland, Dale & Co, Bird & Co and Gilson Gray who will be able to provide information to you on the Conveyancing services they can offer. Should you decide to use these Conveyancing Services then we will receive a referral fee of up to £150 per sale and £150 per purchase from them.

CWH, J Walter and Callum Lyman will be able to provide information and services they offer relating to Surveys. Should you decide to instruct then we will receive a referral fee of up to £125.

Claverings will be able to provide information and services they offer relating to removals. Should you decide to instruct then we will receive a referral fee of up to £125.

Mundys Financial Services who will be able to offer a range of financial service products. Should you decide to instruct Mundys Financial Services we will receive a commission from them of £250 and in addition, the individual member of staff who generated the lead will receive £50.

## BUYING YOUR HOME

An Independent Survey gives peace of mind and could save you a great deal of money. For details, including RCS Home Buyer Reports, call 01522 556088 and ask for Steven Spivey MRICS.

## GETTING A MORTGAGE

We would be happy to put you in touch with our Financial Adviser who can help you to work out the cost of financing your purchase.

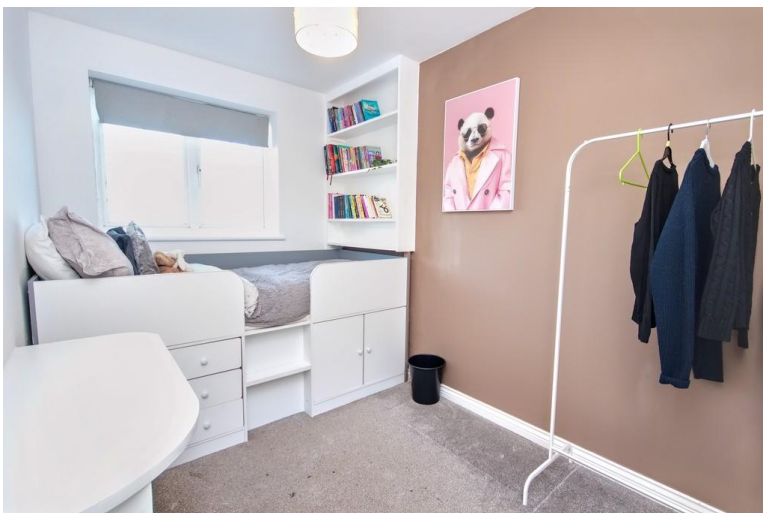
## NOTE

1. None of these services or equipment have been checked or tested.
2. All measurements are believed to be accurate but are given as a general guide and should be thoroughly checked.

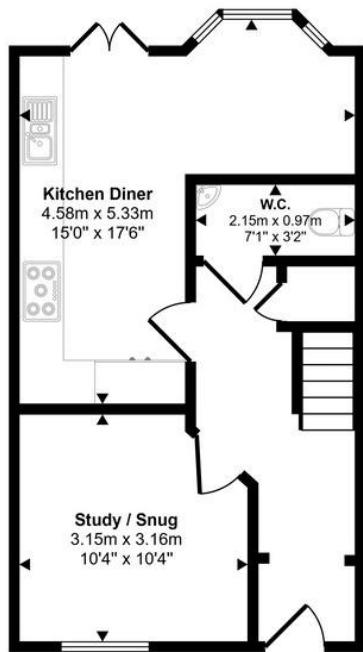
## GENERAL

If you have any queries with regard to a purchase, please ask and we will be happy to assist. Mundys makes every effort to ensure these details are accurate, however they for themselves and the vendors (Lessors) for whom they act as Agents give notice that:

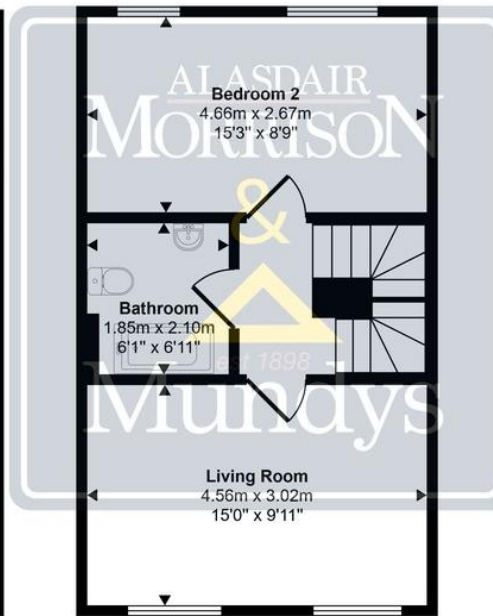
1. The details are a general outline for guidance only and do not constitute any part of an offer or contract. No person in the employment of Mundys has any authority to make or give representation or warranty whatever in relation to this property.
2. All descriptions, dimensions, references to condition and necessary permissions for use and occupation and other details should be verified by yourself on inspection, your own advisor or conveyancer, particularly on items stated herein as not verified.



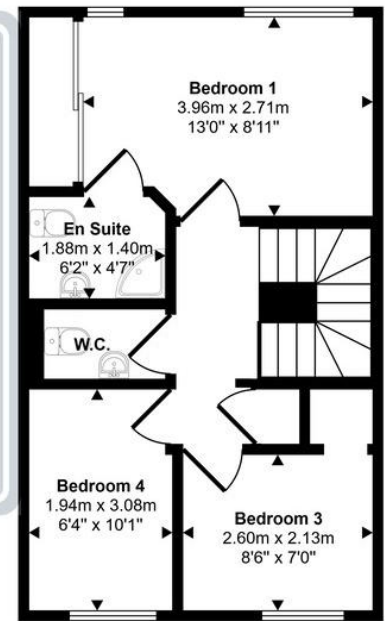
Regulated by RICS. Mundys is the trading name of Mundys Property Services LLP registered in England NO. OC 353705. The Partners are not Partners for the purposes of the Partnership Act 1890. Registered Office 29 Silver Street, Lincoln, LN2 1AS.



**Ground Floor**  
Approx 38 sq m / 408 sq ft



**First Floor**  
Approx 37 sq m / 401 sq ft



**Second Floor**  
Approx 38 sq m / 412 sq ft

This floorplan is only for illustrative purposes and is not to scale. Measurements of rooms, doors, windows, and any items are approximate and no responsibility is taken for any error, omission or mis-statement. Icons of items such as bathroom suites are representations only and may not look like the real items. Made with Made Snappv 360.



46 Middle Gate  
Newark  
NG24 1AL  
newark@amorrison-mundys.net  
01636 700888

22 King Street  
Southwell  
NG25 0EN  
southwell@amorrison-mundys.net  
01636 813971

29 Silver Street  
Lincoln  
LN2 1AS  
info@mundys.net  
01522 510044

22 Queen Street  
Market Rasen  
LN8 3EH  
info@mundys.net  
01673 847487

Agents Note: Whilst every care has been taken to prepare these sales particulars, they are for guidance purposes only. All measurements are approximate and are for general guidance purposes only and whilst every care has been taken to ensure their accuracy, they should not be relied upon and potential buyers are advised to recheck the measurements.