



# 32 Glebeland Way, Shiphay, Torquay, Devon, TQ2 7RP

Offers Over £190,000

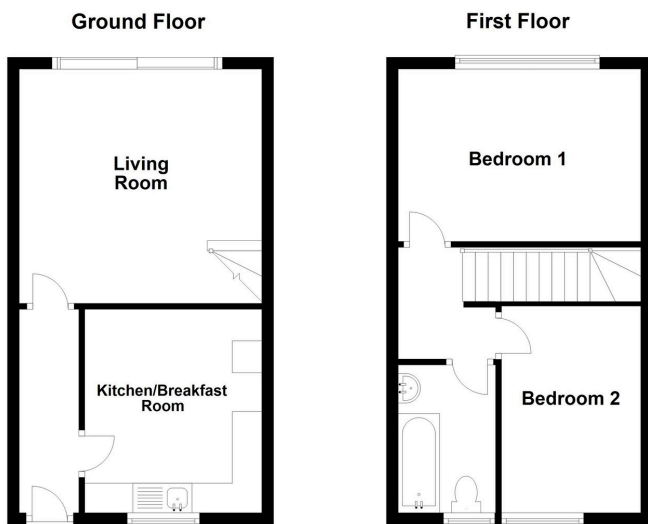
🛏️ 2 🚿 1 🚗 1



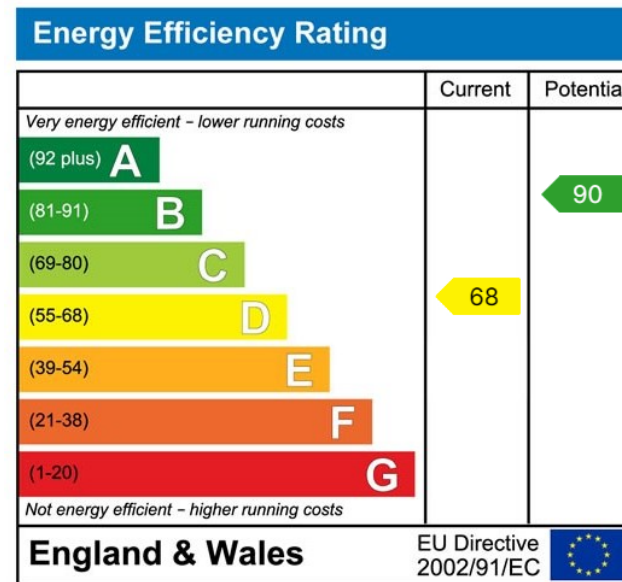
- SEMI-DETACHED HOUSE
- LOUNGE
- BATHROOM
- DOUBLE GLAZING
- GARAGE & DRIVEWAY
- 2 BEDROOMS
- KITCHEN/BREAKFAST ROOM
- GAS CENTRAL HEATING
- SUNNY GARDENS
- NO ONWARDS CHAIN



Chain Free – Modern Two-Bedroom Semi-Detached Home in Sought-After Shiphay. Situated in the ever-popular Shiphay area, this beautifully presented two-bedroom semi-detached home offers stylish, low-maintenance living in a highly convenient location. Perfect for first-time buyers, downsizers, or investors, the property is ready to move straight into. The accommodation features a bright and welcoming lounge, a modern fitted kitchen/breakfast room, two well-proportioned bedrooms, and a contemporary bathroom suite. Tastefully finished throughout, the home combines comfort with practicality. Outside, enjoy sunny side and rear gardens—ideal for relaxing or entertaining. A single garage and driveway are also included nearby. Ideally located close to the hospital, local shops, well-regarded schools, and excellent transport links, this is a fantastic opportunity not to be missed.



This plan is to be used only as an indication of the floor layout and is not to scale. Plan produced using PlanUp.



**OFFICE**  
 49 Hyde Road, Paignton,  
 Devon, TQ4 5BP  
 01803 521111 | info@propertyladderdevon.com  
 propertyladderdevon.com

Agents Note: Whilst every care has been taken to prepare these particulars, they are for guidance purposes only. All measurements are approximate and are for general guidance purposes only and whilst every care has been taken to ensure their accuracy, they should not be relied upon and potential buyers/tenants are advised to recheck the measurements